

ON AIR CLOCK

(Rev. 2.1 ENG)



CONTENT

1 INTRODUCTION 3

2 SETUP AND CONFIGURATION 3

 2.1 SERVER SIDE:..... 3

 2.2 DEVICE SIDE: 8

 2.3 SERVER-CLIENT PAIRING..... 9

3 ONAIR CLOCK REMOTER SETUP11

4 USING ONAIR CLOCK SERVER.....14

 4.1 ACTIVE 14

 4.2 BLACKLIST 16

 4.3 EDITOR..... 17

5 ONAIR CLOCK REMOTER22

6 FINAL CONSIDERATION AND AXEL TECHNOLOGY CONTACT23

1 INTRODUCTION

Thank you for purchasing Axel Technology new release of On-Air clock, the software that allows you to always have a look on time, countdowns or countups that you want to watch on every display you need in your radio or tv studio. This innovative product gives you the chance to have an analogic or digital performant clock in your server, controlled from every client PC workstation in your broadcasting network.

Prerequisites:

- 1 PC with Windows OS
- HDMI TV or Monitor
- Usb Mouse and/or USB keyboard and/or USB hub
- OnAirClock dongle
- WIFI access point (if using a WIFI onairclock device)
- OnAirClockSetup.exe installation sw
- OnAirClockRemoterSetup.exe installation for Remoter service
- OnAirClockDevice - any android device or a Smart TV Dongle with:
 - DroidVncServer.apk (android app to control your screen outputs on a remote browser of your LAN & WIFI Network)
 - OnAirClock.apk (android app to install OnAirClock on your device)

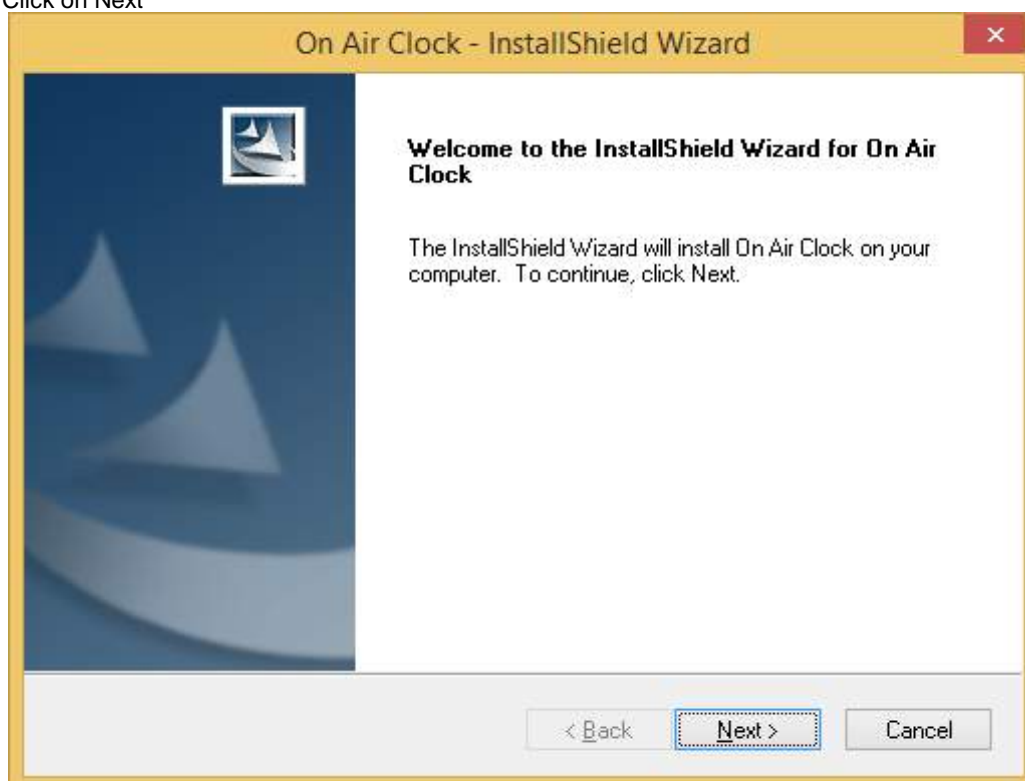
2 SETUP AND CONFIGURATION

The PC with Windows OS will act as the time server. Time impulse will be pushed through the LAN (or WIFI) to the OnAirClockDevice that will display Clock and other information on the HDMI video output.

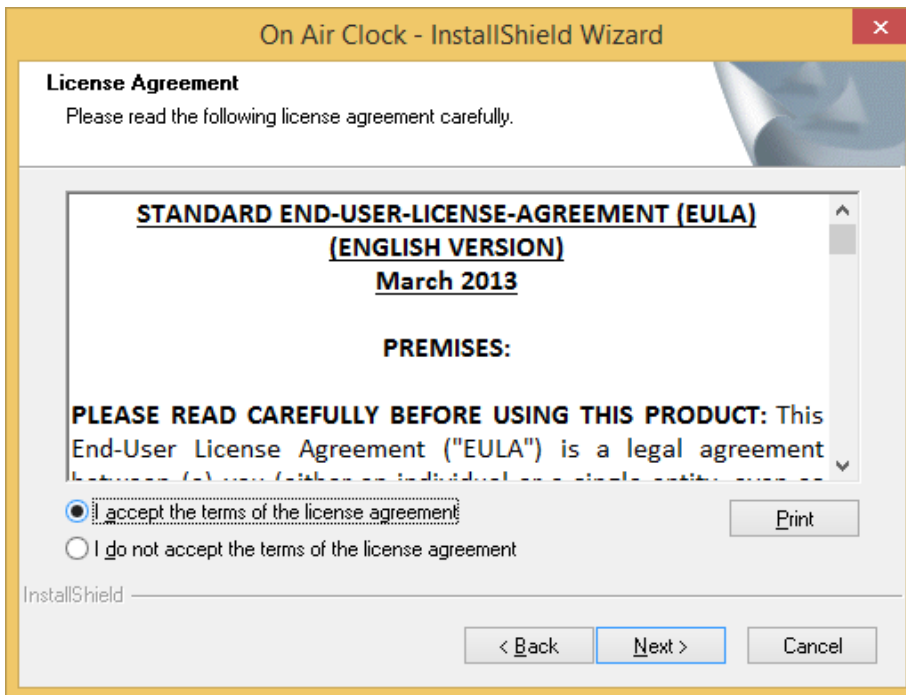
2.1 SERVER SIDE

- 1) Install OnAirClockSetup.exe on the Windows PC (installation may require additional libraries such as Microsoft .NET Framework) as shown in following steps:

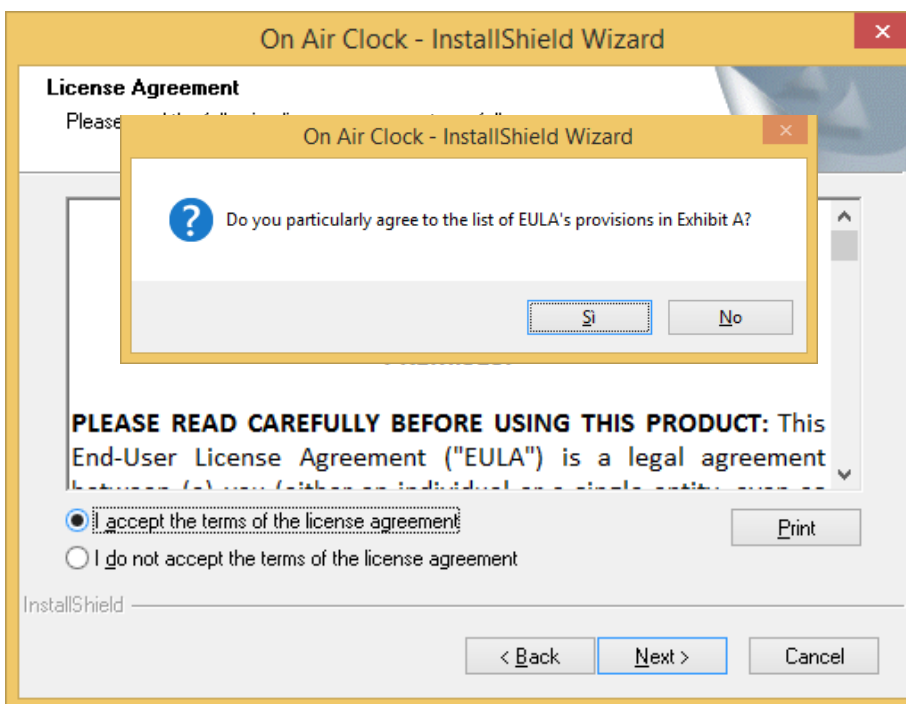
Click on Next

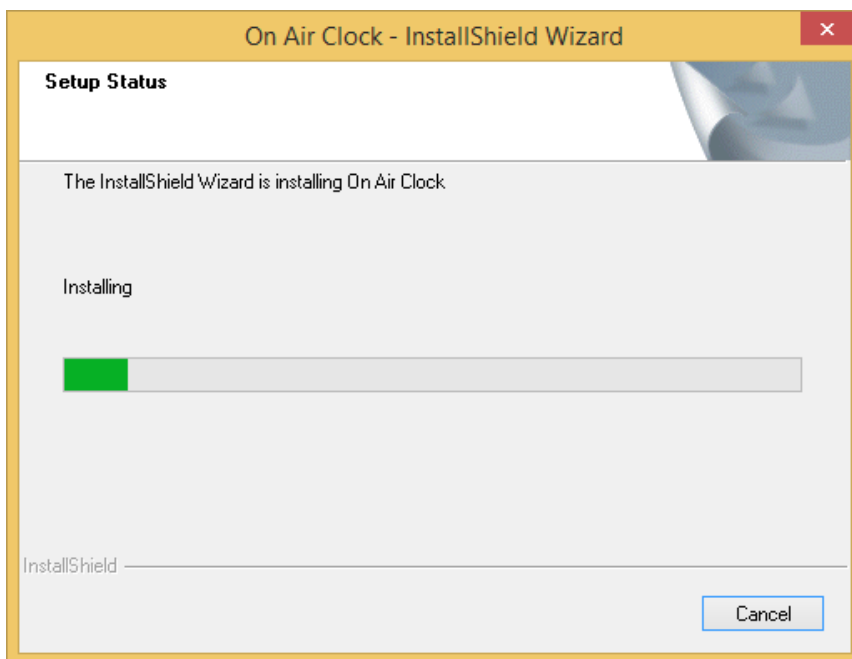


Click on Next

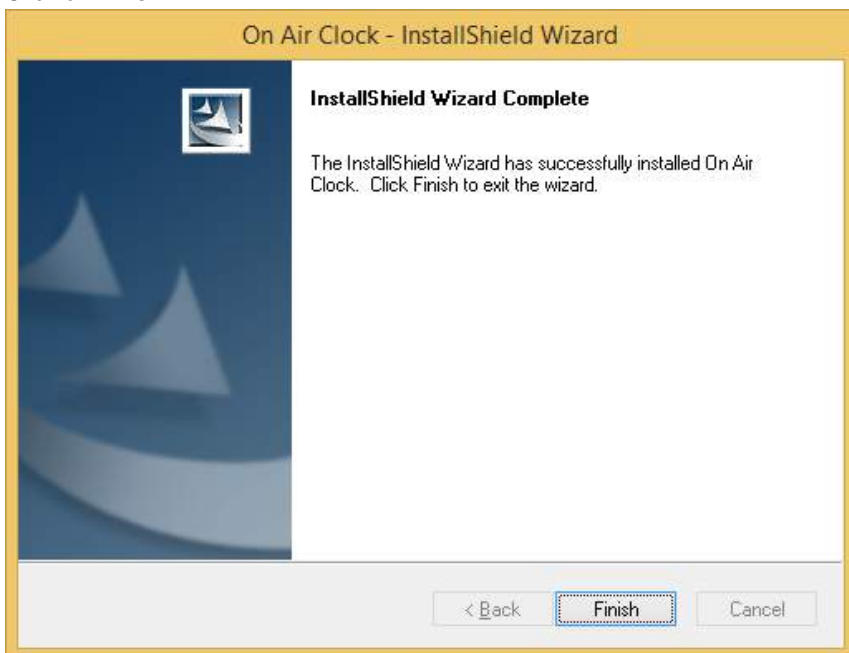


Click on Yes and wait...

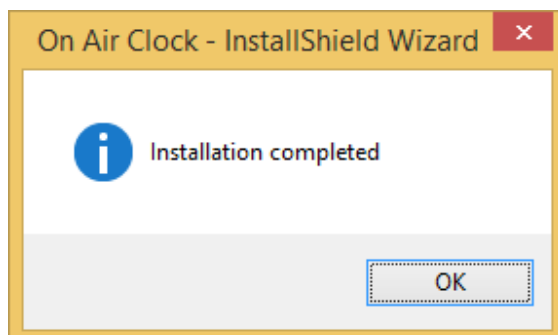




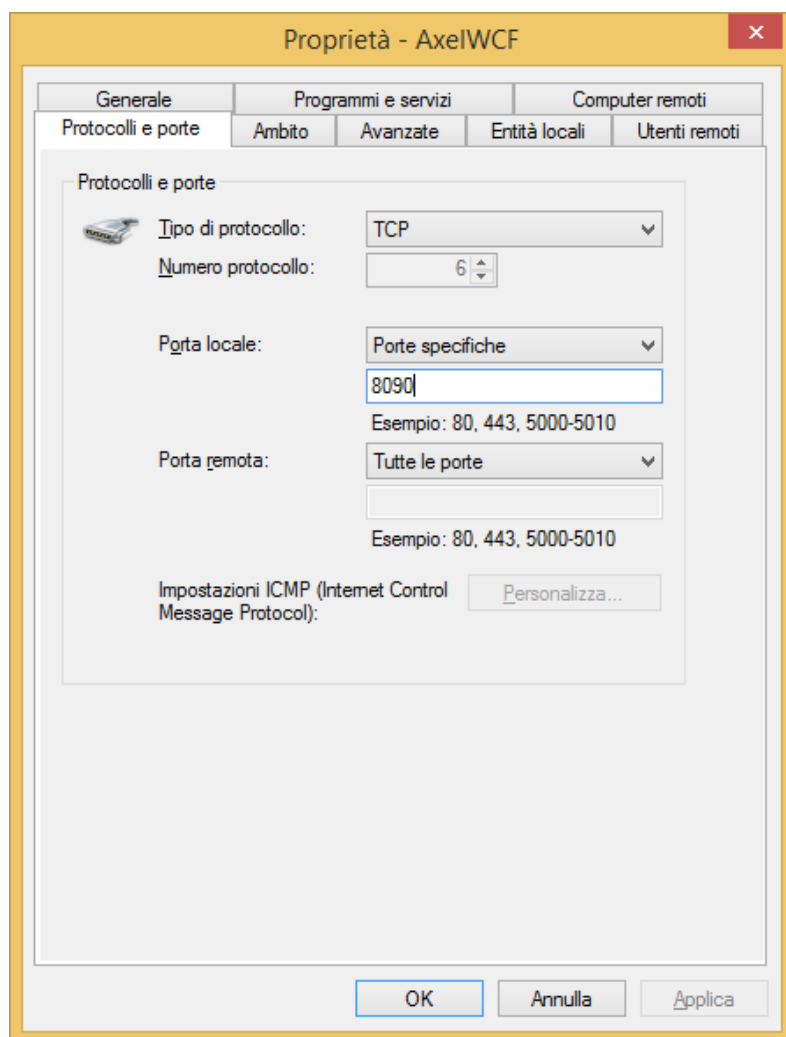
Click on Finish



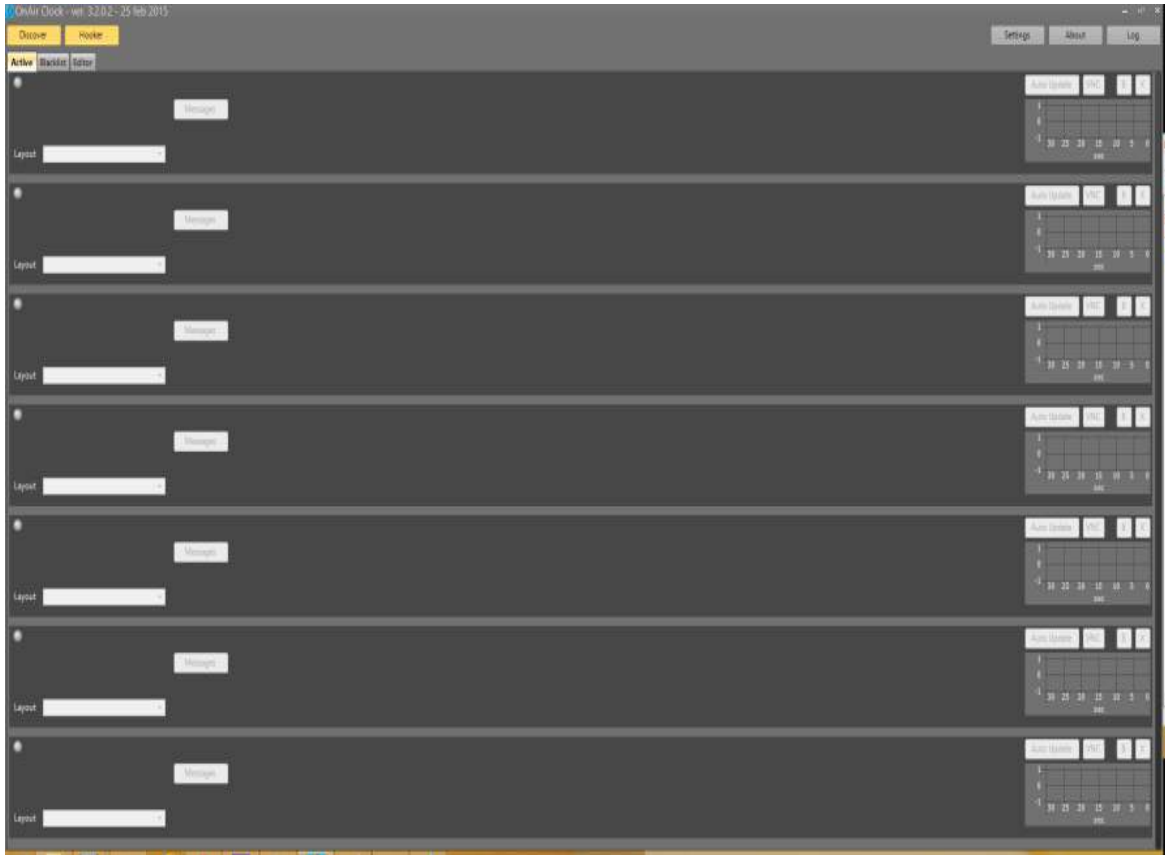
Click on OK



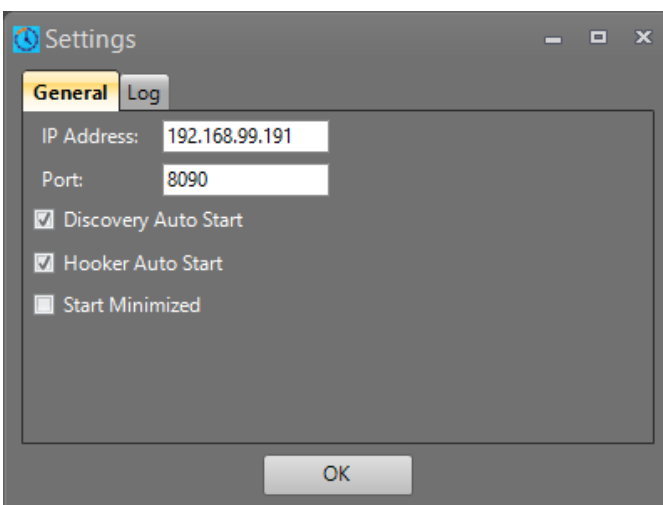
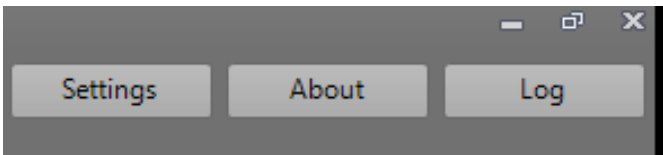
- 2) Connect the hardware dongle to a free USB port of the PC
- 3) Insert an incoming rule in the advanced option of windows firewall allowing all incoming connection on port 8090



- 4) Run the Onairclock sw on the Windows PC



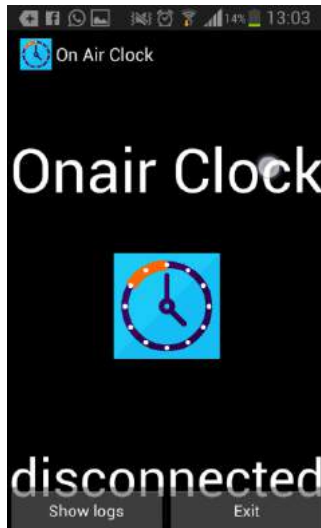
- 5) Open the settings panel and be sure that in the *IP Address* field the current IP of the Windows PC is displayed (if using multiple IPs or LAN cards, specify the IP on the subnet where the Access point and the OnAirClock device are connected)



Onairclock software must be running 24/7. Eventually create a link in Windows Start menu to run Onairclock automatically on windows startup.

2.2 DEVICE SIDE

- 1) Connect the Onairclock Device to the HDMI monitor
- 2) Connect USB mouse and/or USB Keyboard (using a USB HUB) to the Onairclock device
- 3) Connect power using the USB power supply (sometimes USB coming from TV or monitor is not enough for the onairclock device)
- 4) On Startup, Onairclock will show a *DISCONNECTED* message (As the next picture shows on an android device). Right click to exit the app, then configure WIFI (or LAN) settings to connect correctly to your local network. DHCP and fixed IP configurations are possible.



OR



- 5) Restart The Onairclock device and verify that connection to local network is automatically established upon startup

2.3 SERVER-CLIENT PAIRING

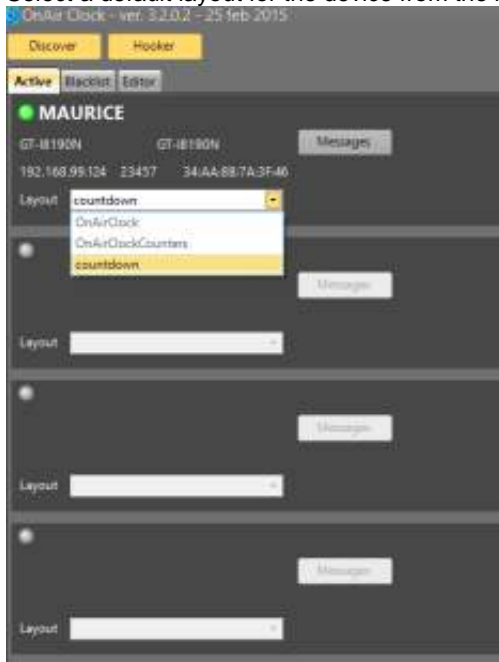
On the windows PC a message box will appear, showing IP address and mac address of the Onairclock device. Type a Name for the specific device (like "OAC1") and click on OK.



After a few seconds the device will appear in the *connected devices* list.



Select a default layout for the device from the list (OnairClock for example).



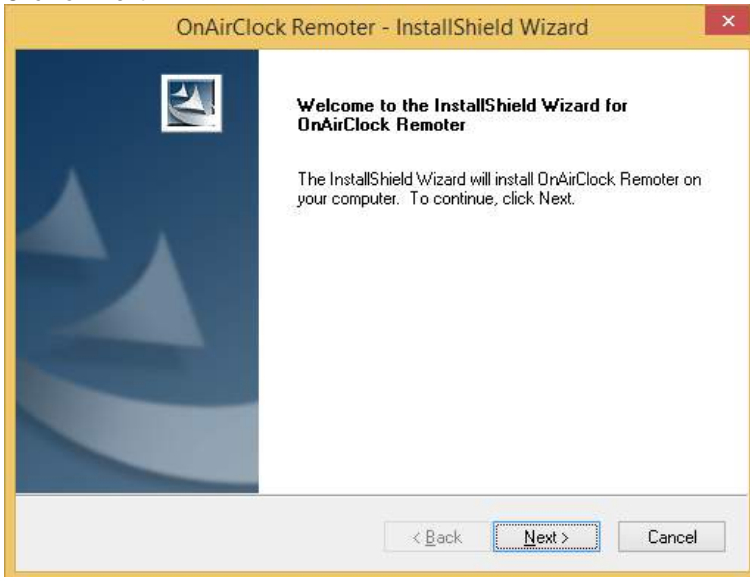
After a few seconds you will see the clock on the HDMI TV.



3 ONAIR CLOCK REMOTER SETUP

Open 'OnAirclock Remoter.exe'

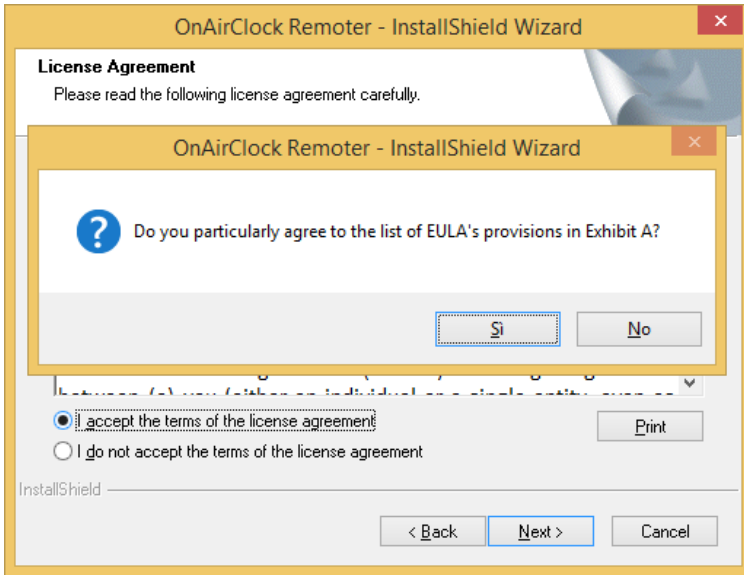
Click on Next



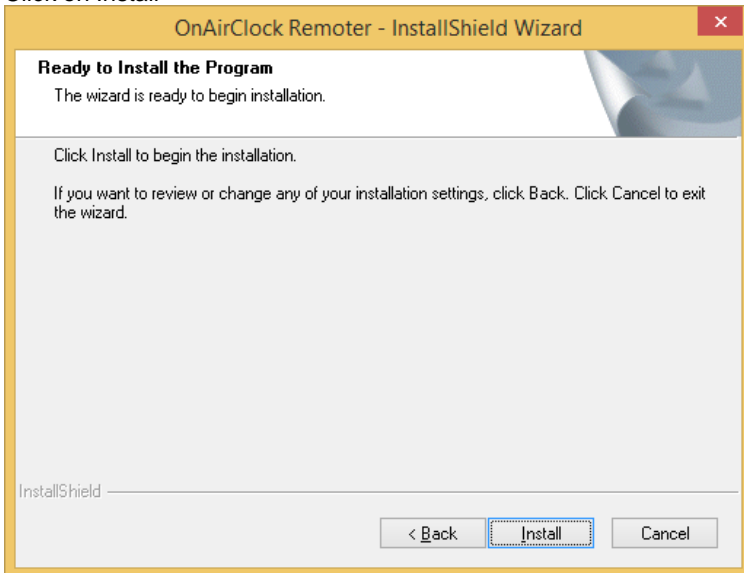
Click on Next



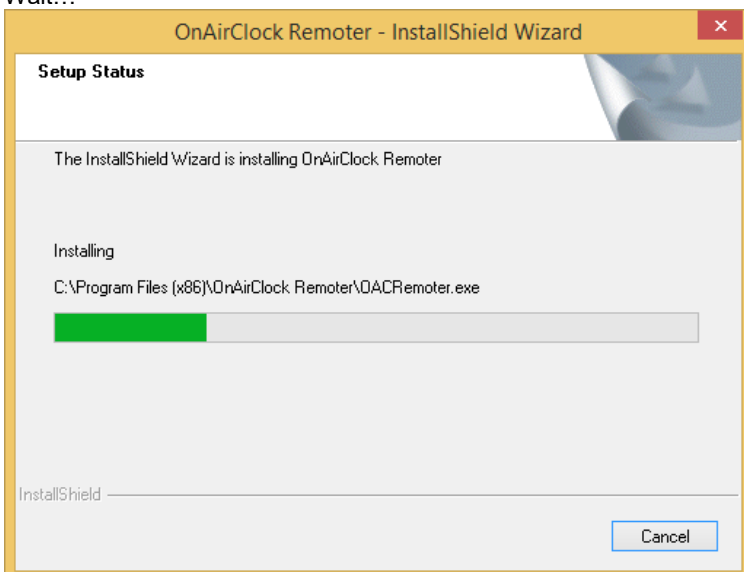
Click on Yes



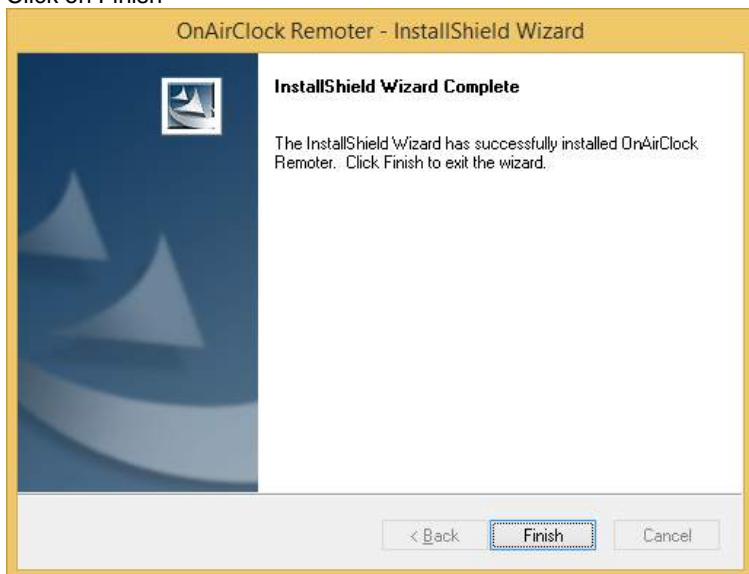
Click on Install



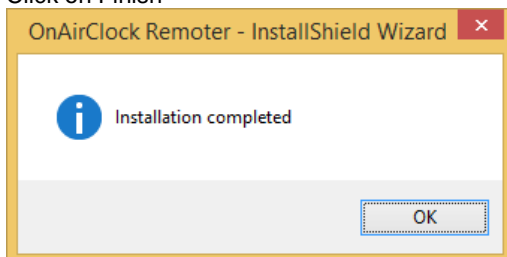
Wait...



Click on Finish



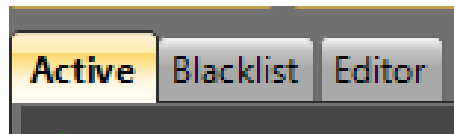
Click on Finish



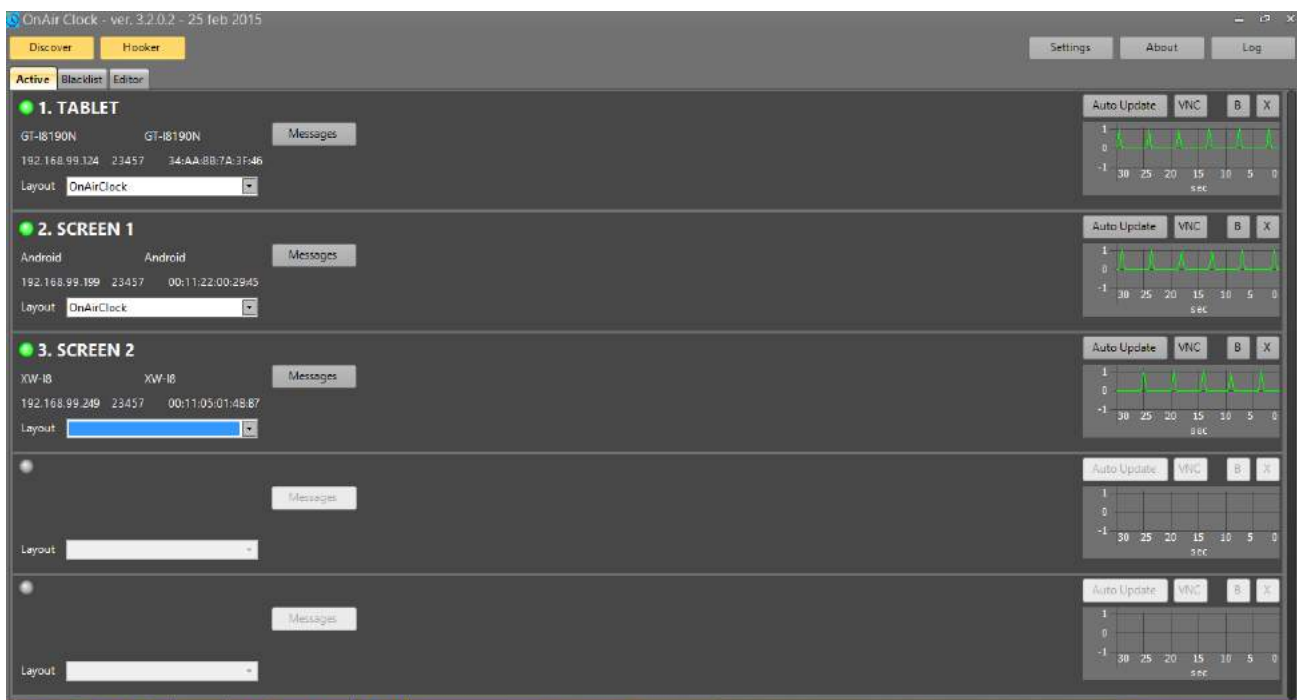
4 USING ONAIR CLOCK SERVER

In the server part software, you can find three different tabs:

- ACTIVE
- BLACKLIST
- EDITOR

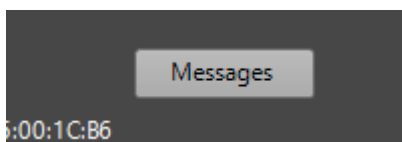


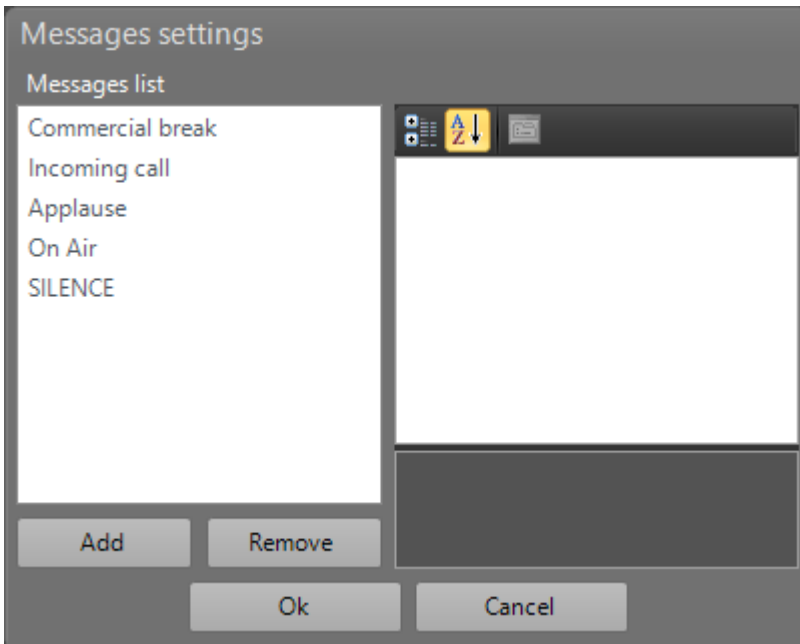
4.1 ACTIVE



In this tab you have the control of all client devices connected to your network server. When you open the app for the first time on any OnAirClock network device, OnAirClock server detects for it and adds it in the available device list with a green led. If the light of the device is grey, it means the device is available but it is not running the app. So, to activate it just run the OnAirClock app on the device.

For each device you can select through 4 default messages to be shown in the page in the moment you prefer:



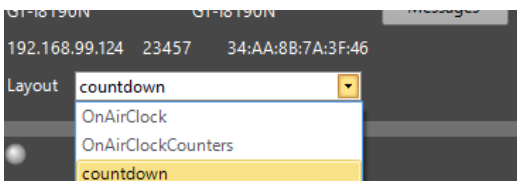


Commercial break (0)
 Incoming call (1)
 Applause (2)
 On Air (3)
Customizable messages (...)

You can also add new messages or remove the existing one:
 In the box at the right you can type the text you want to display.

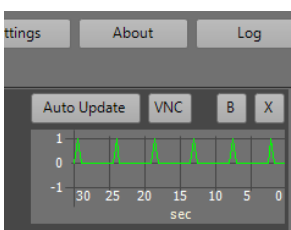
Messages will be numbered from

For each device, in the left side of the current screen:



- Click on the drop down menu to select the layout you want to confirm. You have two default layouts, plus the other ones you create and change in the editor part.

For each device, in the right side of the current screen:



- Click on 'Auto Update' button to set the automatic update of the device release of OnAirClock app. The app update itself to the same release of the OnAirClock on the server.
- Click on 'VNC' button to have a remote control on the output device through a VNC service browsing on Internet Explorer. In this way you do not need any mouse or keyboard directly connected to the device.
- Click on 'B' button to put the device in the Black List.
- Click on 'X' button to delete the device from the Active list.

4.2 BLACKLIST



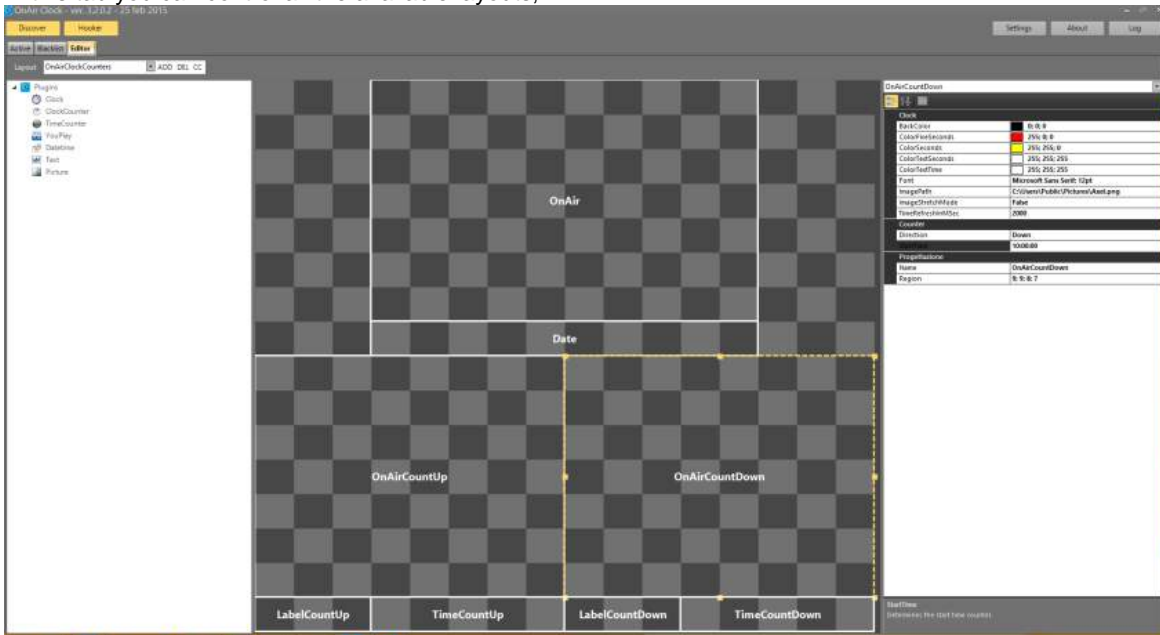
In this tab you have the control of all client devices you previously put in the Black List. For each device, in the right side of the current screen:

- Click on 'R' button to restore the device to the Active list.

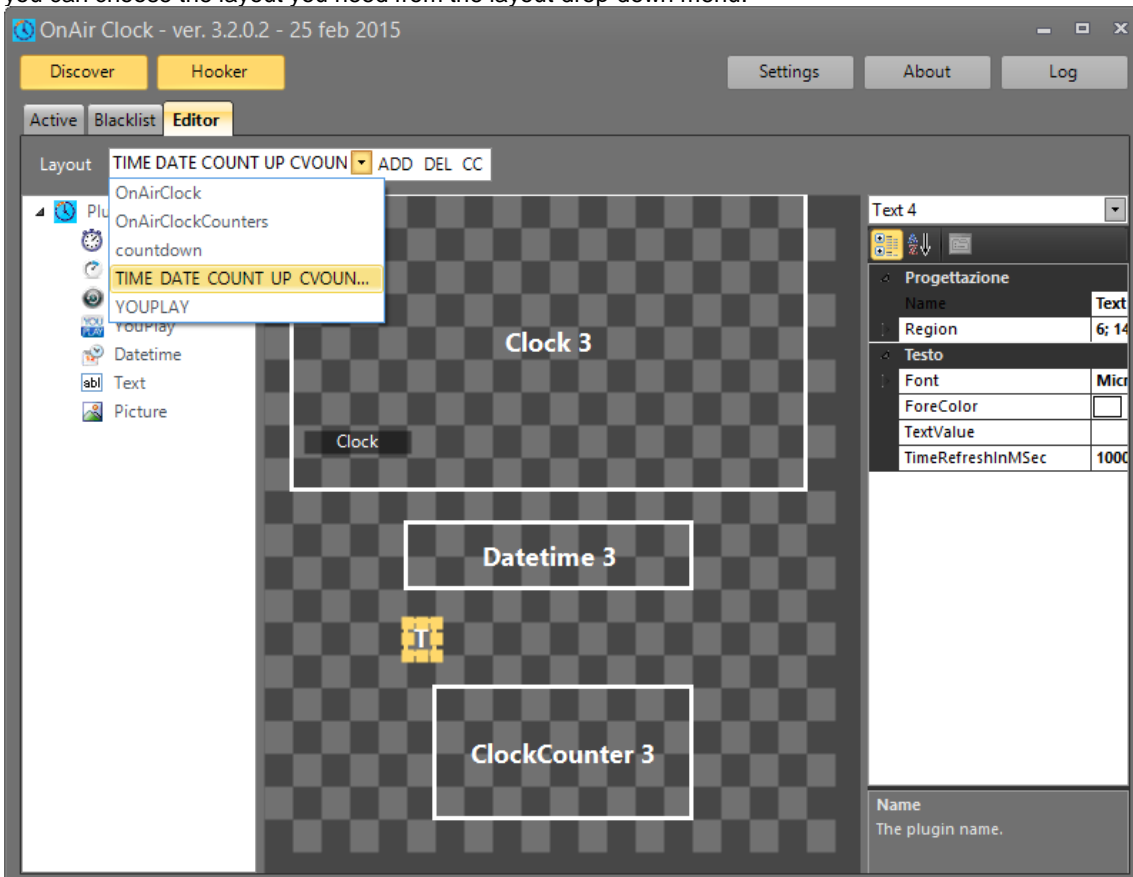


4.3 EDITOR

In this tab you can control all the available layouts,



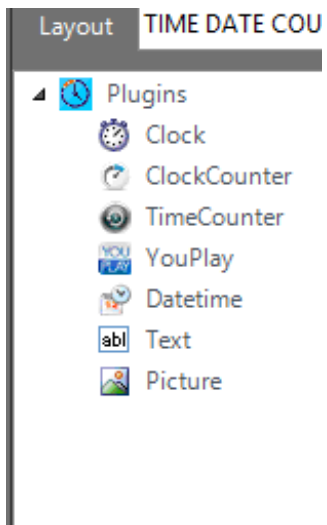
you can choose the layout you need from the layout drop-down menu.



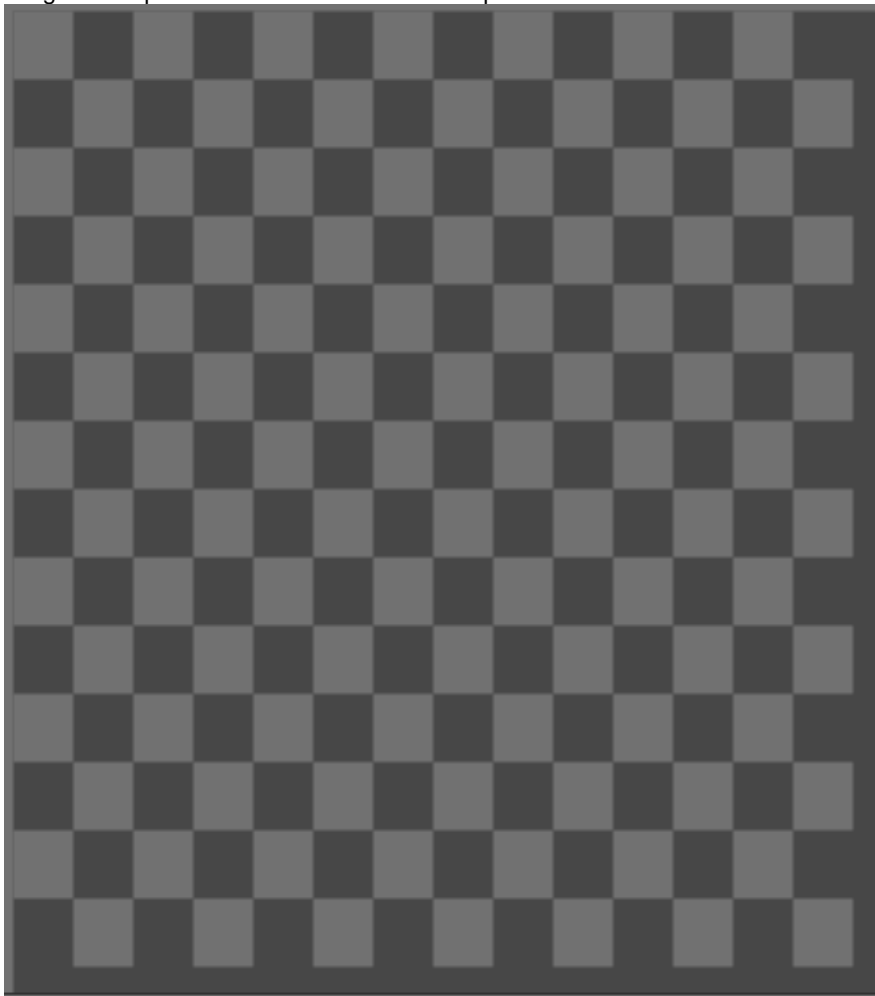
Next to the drop-down menu you have three buttons: 'ADD', 'DEL', 'CC' (Carbon Copy)

By clicking on 'ADD' you can add a new layout. Give it a name and set its width and height.
 By clicking on 'DEL' you can delete the selected layout. Then confirm the removal.
 By clicking on 'CC' you copy the selected layout. Give it a new name, then you can edit it.

In every layout you have the control of seven plugins and you can add them or remove them from the page. Available Plugins are: Clock, Clock Counter, Time Counter, YouPlay, DateTime, Text, Picture.



Drag and drop an item of the list into the composer



You can resize the item by dragging the handles shown on its edges and corners. You can move the item into the composer by drag & drop operation.

Clock: this plugin is a mix between an analogic and digital clock

Clock Counter: this plugin is a mix between an analogic and a digital count up or count down.
Important Parameters: click on the clock counter item into the composer and set the parameters appearing at the right side.
You can select the count up or count down mode for the counter and you can set the time starting point

Time Counter: this plugin is a digital count up or count down
Important Parameters: click on the time counter item into the composer and set the parameters appearing at the right side. You can select the count up or count down mode and the time starting point.

YouPlay: if you have a YouPlay running in your network, you can display its counters through this plugin.
Important Parameters: click on the YouPlay item into the composer and set the parameters appearing at the right side. You must type YouPlay Pc IP address, and which data you want to display on your OnAir Clock output.

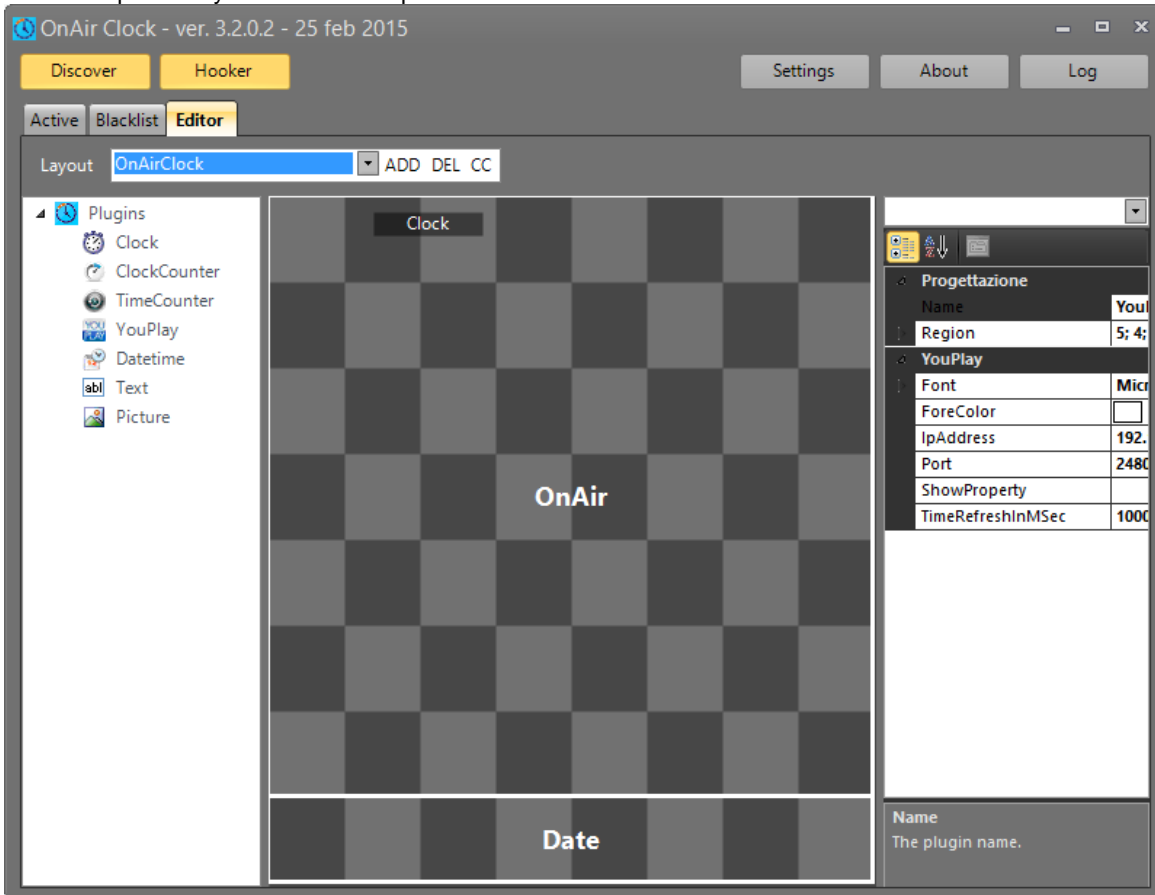
DateTime: this plugin allows you to set a viewer for the current date time.

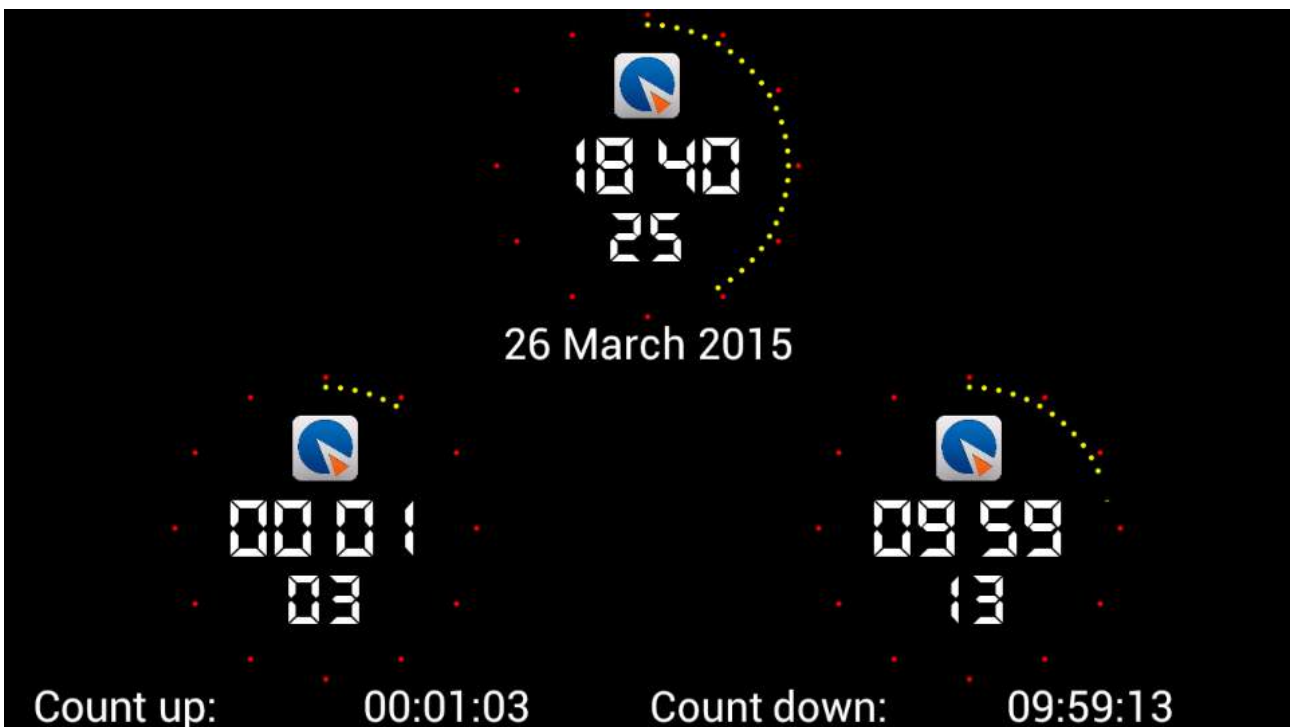
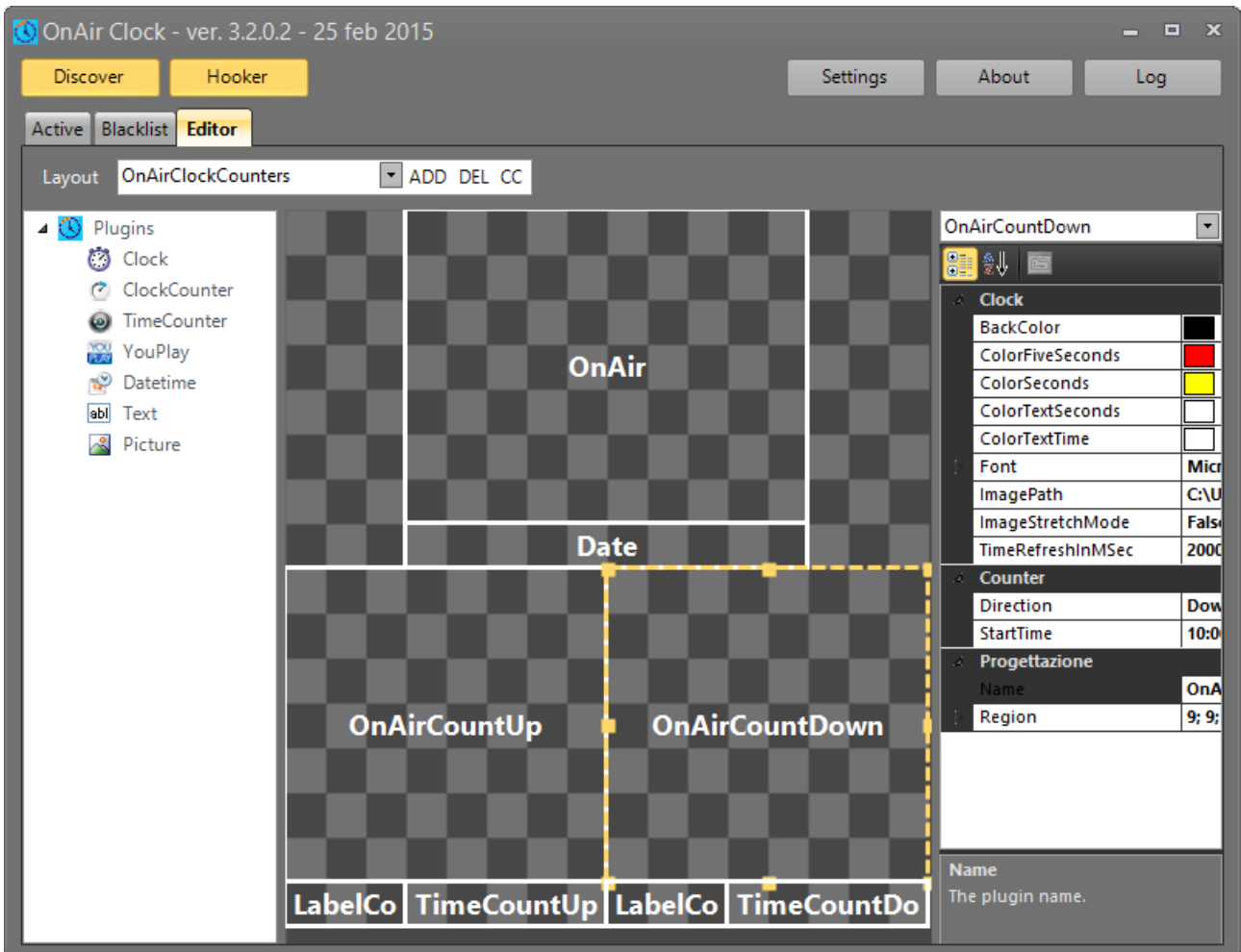
Text: this plugin allows you to set a customizable text you can put all over the page.
Important Parameters: click on the text item into the composer and set the parameters appearing at the right side. You can type the text value to display

Picture: this plugin allows you to set a picture you want to display in the page.

For each object, in the right side, you can decide the refresh time in milliseconds.

Two Examples of layouts and two output screens..





5 ONAIR CLOCK REMOTER

For each workstation of the network, you can set an OnAir Clock Remoter to have a constant control of messages and counters.

After the installation, run 'OAC Remoter.exe'.



To show a Message you previously set in the Messages section of the active tab, click on MSG, then click on the button related to the number of the message you want to display on the output screen.

To start with a count, click on COUNT UP, or COUN DOWN, and type the starting time, then click on ENTER. Click again on COUNT UP, or COUN DOWN, and click on the START/STOP button.

