

# SOUNDTRACK STUDIO

## USER GUIDE

(Rev. 1.1 ENG)



---

**SEDE DI BOLOGNA:**

VIA CADUTI DI SABBIVNO 6/F • 40011 ANZOLA EMILIA • BOLOGNA • ITALY  
PHONE: +39 051 736555 • +39 051 736154 • FAX: +39 051 736170  
e-mail: info@axeltechnology.com • <http://www.axeltechnology.com>

**SEDE DI BERGAMO:**  
VIA ITALIA, 1  
24030 MEDOLAGO • BERGAMO • ITALY

**SEDE DI LUCCA - Broadcast Audio Devices s.r.l.**  
VIALE MARCONI, 86  
55045 PIETRASANTA • LUCCA • ITALY

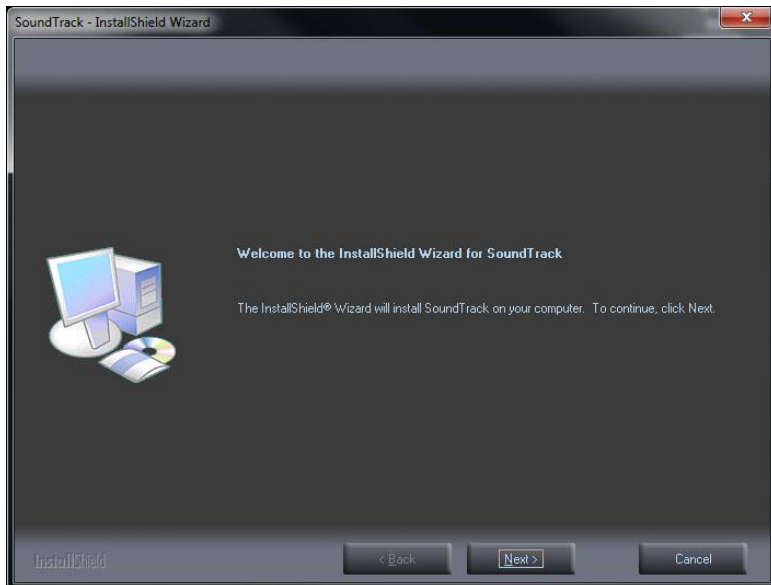
**SEDE DI ROMA:**  
VIA SALARIA, 223 C  
00015 MONTEROTONDO • ROMA • ITALY

## TABLE OF CONTENTS

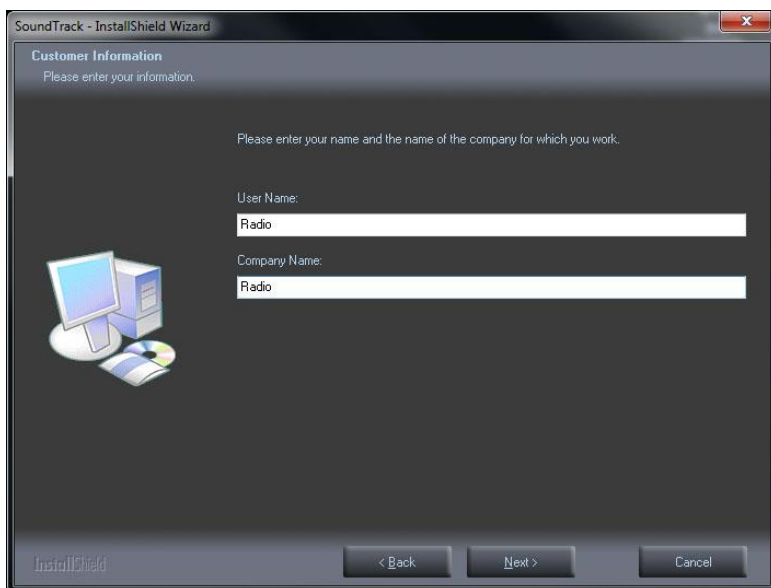
<b>SOUNDTRACK</b> .....	<b>1</b>
<b>STUDIO</b> .....	<b>1</b>
<b>USER GUIDE</b> .....	<b>1</b>
<b>1 INSTALLATION</b> .....	<b>3</b>
<b>2 RUN SOUNDTRACK</b> .....	<b>5</b>
<b>3 AUDIO MANAGER</b> .....	<b>6</b>
3.1.1 <i>METADATA</i> .....	6
3.1.2 <i>SCHEDULING RULES</i> .....	7
3.1.3 <i>EDITOR</i> .....	7
3.2 <b>IMPORT</b> .....	8
3.2.1 <i>FILE</i> .....	8
3.2.2 <i>FOLDER</i> .....	9
3.2.3 <i>AUDIO CD</i> .....	10
3.2.4 <i>FTP</i> .....	10
3.3 <b>SEARCH</b> .....	11
<b>4 ADVERTISING</b> .....	<b>12</b>
4.1.1 <i>METADATA</i> .....	12
4.1.2 <i>SCHEDULING RULES</i> .....	13
4.1.3 <i>EDITOR</i> .....	13
4.2 <b>SEND DATA</b> .....	14
<b>5 SCHEDULE MANAGER</b> .....	<b>15</b>
5.1 <b>SCHEDULING RULES</b> .....	15
5.1.1 <i>CLOCK</i> .....	15
5.1.2 <i>EVENTS</i> .....	19
5.1.3 <i>FILLERS</i> .....	19
5.2 <b>DAILY SCHEDULE</b> .....	20
<b>6 ON-AIR</b> .....	<b>22</b>
<b>7 PRESENTATION MODE</b> .....	<b>27</b>
<b>8 STREAMING</b> .....	<b>28</b>
<b>9 SETTINGS</b> .....	<b>29</b>
9.1 <b>ON-AIR</b> .....	29
9.1.1 <i>General</i> .....	29
9.1.2 <i>Audio Hardware</i> .....	29
9.1.3 <i>Advertising</i> .....	29
9.1.4 <i>Extern</i> .....	30
9.1.5 <i>Scheduling</i> .....	31
9.1.6 <i>Mix</i> .....	31
9.2 <b>ADVERTISING MANAGER</b> .....	31
9.2.1 <i>General</i> .....	31
9.3 <b>COMMON SETTINGS</b> .....	32
9.3.1 <i>General</i> .....	32
9.3.2 <i>Language</i> .....	32
9.3.3 <i>Font Type</i> .....	32
9.3.4 <i>Audio HW for Editing</i> .....	32
9.4 <b>PRESENTATION MODE</b> .....	32
<b>10 UPD</b> .....	<b>33</b>
<b>11 LOCK</b> .....	<b>33</b>
<b>12 LOG</b> .....	<b>34</b>
<b>13 EXIT</b> .....	<b>34</b>

# 1 INSTALLATION

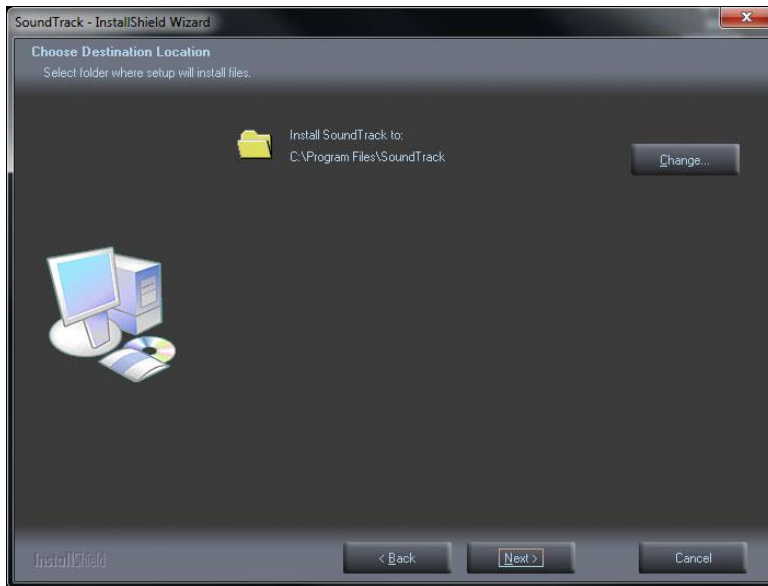
Run **setup** and choose the language for the installation



Click **Next**



Insert the **User Name** (name of the Radio Station) and **Company Name**, then press **Next**



Choose the folder where the Soundtrack Studio will be installed, then press **Next** and then **Install**. The installation will start automatically.  
At the end of the installation press **Finish**.  
Soundtrack Studio will automatically set up the sound card and start.

## 2 RUN SOUNDTRACK

Run Soundtrack Studio with double click on the Soundtrack icon.

The software always will open on the on-air window playing in automatic mode. If there is not any scheduling, on-air will play random songs.

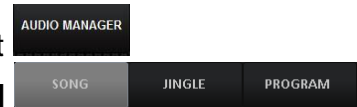


On the bottom, from the left, there are the buttons that allows to move inside the various sections of the software: **ONAIR**, **AUDIO MANAGER**, **SCHEDULE MANAGER**, **PRESENTATION MODE**, **STREAMING**, **SETTINGS**, **LOG**.

### 3 AUDIO MANAGER

**AUDIO MANAGER** is the section where to insert and manage all the songs and audio.

Open the **AUDIO MANAGER** using the button on the bottom left



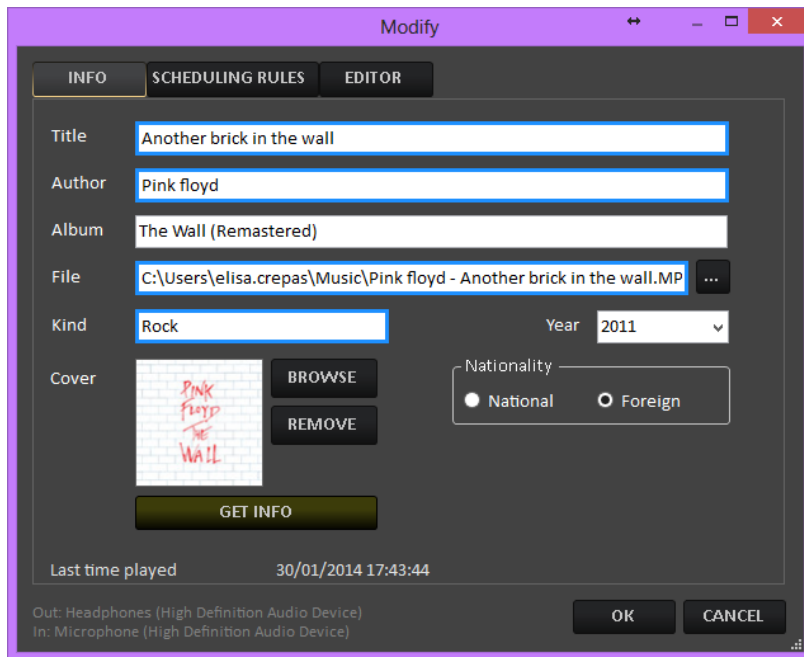
It is possible to choose if insert a **SONG**, **JINGLE** or **PROGRAM**

It is possible to insert a new song/audio in 2 ways:

- **ADD** – To create manually a song schedule, give rules to the song and edit start, intro and stop
- **IMPORT** – To import a song (or a group of songs) from file, folder, audio cd or iTunes. The song schedule will be automatically created and can be modified by the user.

The song schedule is divided into three parts.

#### 3.1.1 METADATA




The fields highlighted in blue are compulsory.

**TITLE:** Title of the song

**AUTHOR:** Author of the song

**ALBUM:** Album of the song

**FILE:** Path of the song. It is possible to choose it using the search button 

**KIND:** Category (kind) of the song used for the scheduling by categories

**YEAR:** Year of the song

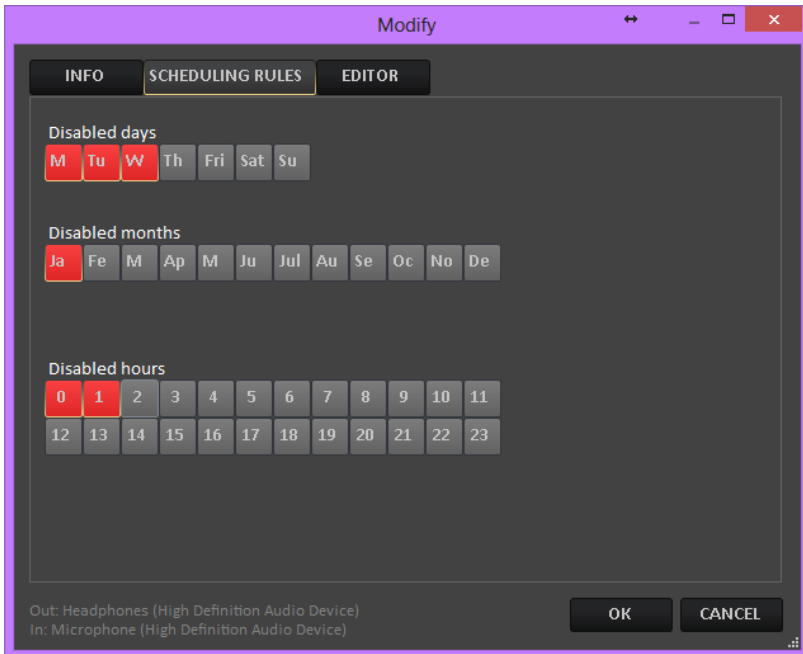
**COVER:** Using the **BROWSE** button it is possible to connect an image (for example the cover of the album) to the song. To remove the cover image, use the **REMOVE** button.

**GET INFO:** If the pc is connected to internet, it is possible to retrieve metadata (such as cover, album or year). The search will be based on Author and Title information.

**NATIONALITY:** Choose if the song is national or foreign. This information can be used for scheduling.

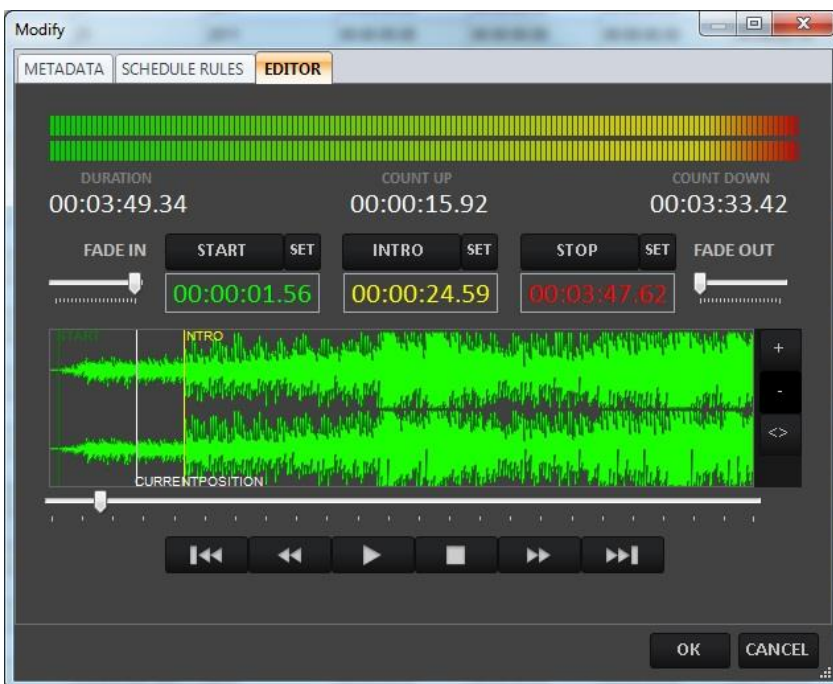
**LAST TIME PLAYED:** Shows the date and time of the last passage of the song on air

### 3.1.2 SCHEDULING RULES



It allows to disable Days, Months or Hours from the scheduling

### 3.1.3 EDITOR



It allows to set/modify the **START**, **INTRO** and **END** points of the song and set **FADE IN** and **FADE OUT**.

To set/modify the **START**, **INTRO** and **END** points, set the cursor on the point you want to set and press **SET**.

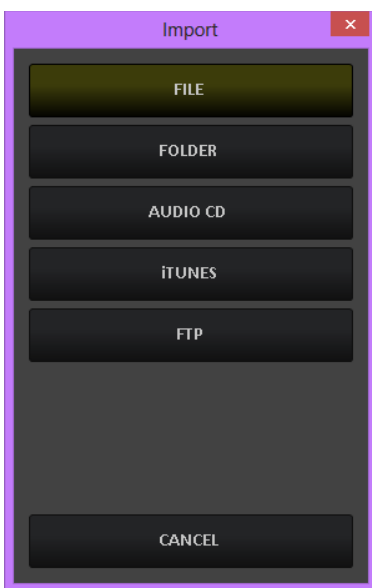
To set/modify **FADE IN** and **FADE OUT**, move the **FADE IN** and **FADE OUT** cursor



**NB:** It is possible to enlarge the window to full screen in order to have a more detailed waveform.

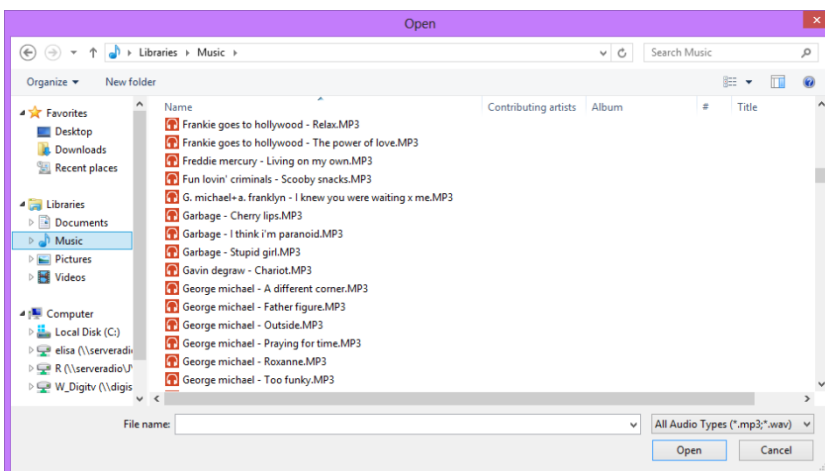
## 3.2 IMPORT

The **IMPORT** button allows to import audio in different ways



### 3.2.1 FILE

This tool is useful if you want to import a single song from a specific path. It will open a windows search instance where to find the audio file you want to import.





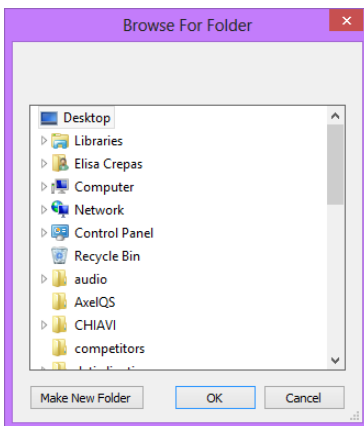
Choose the file to be imported and press **OPEN**.

Soundtrack Studio will automatically create the scheduling of the song filling it with the metadata (tag).

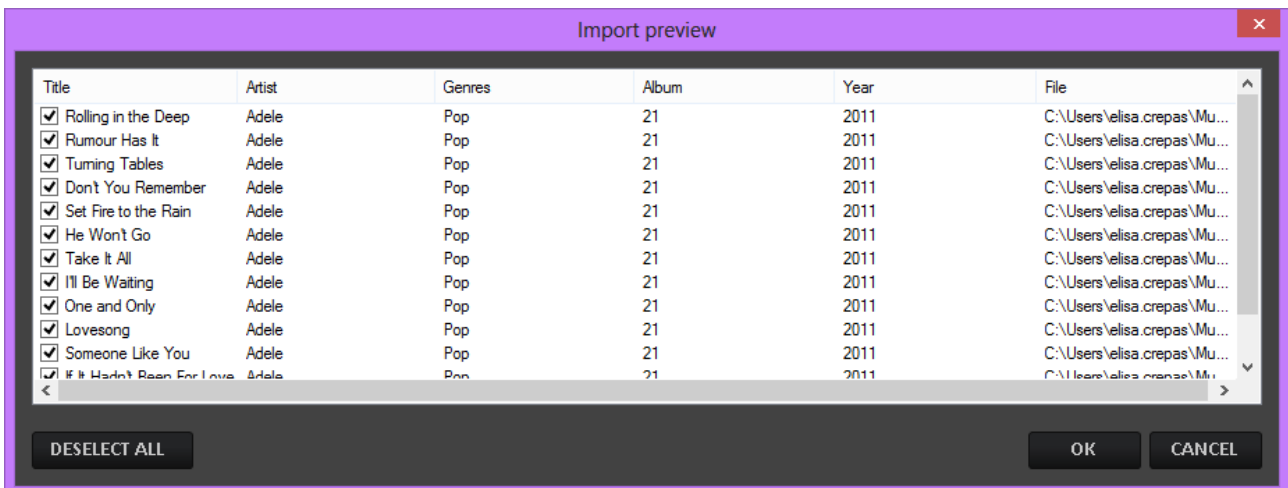
### 3.2.2 FOLDER

This tool is useful if you want to import a whole folder or many files contained in the same folder.

It will open a windows search instance where to find the folder that contains the audio file you want to import

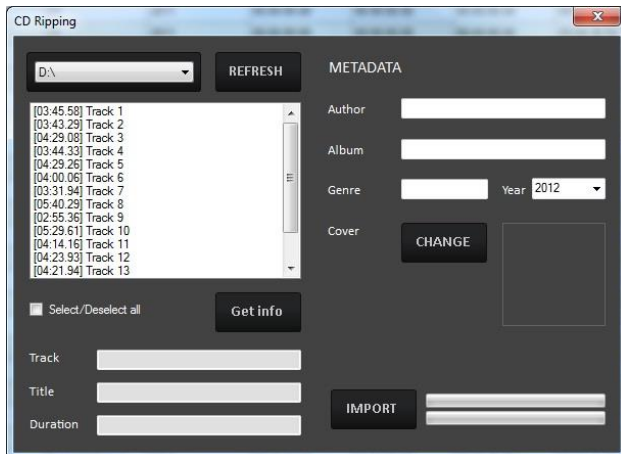


Once selected the folder and press **OK**, it will show the following window:



In this window it is possible to select the songs to be imported.

### 3.2.3 AUDIO CD



This tool allows to rip audio tracks from a cd into a file.

Select the track (or the tracks) to be imported, insert the information to be imported on the song schedule (Title, Track, Album, Genre...) and press the **IMPORT** button to rip the songs.

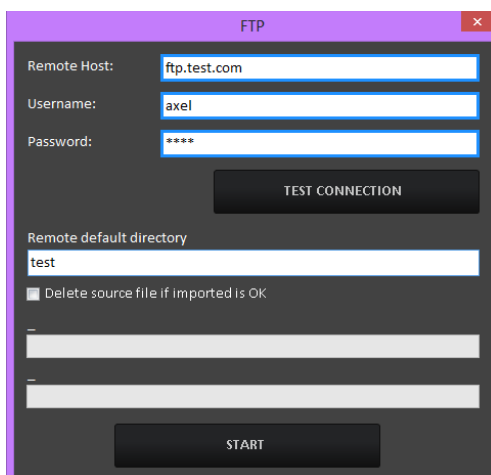
The **GET INFO** button, if the pc has an internet connection, will retrieve from CCDB all the information about the cd and fill the metadata fields automatically.

**All the** songs/audio can be:

MODIFIED by the **MODIFY** button

DELETED by the **DELETE** button

### 3.2.4 FTP



**Remote Host:** ftp host address

**Username:** Username (provided by the host)

**Password:** Password (provided by the host)

**Test connection:** After the insertion of the ftp settings, it is possible to check the connection

**Remote default directory:** Folder or directory where to find the files to be downloaded

**Delete source if imported is Ok:** If enabled, the system will delete the source file from the ftp folder when the download is completed

**Start:** starts the download

### 3.3 SEARCH

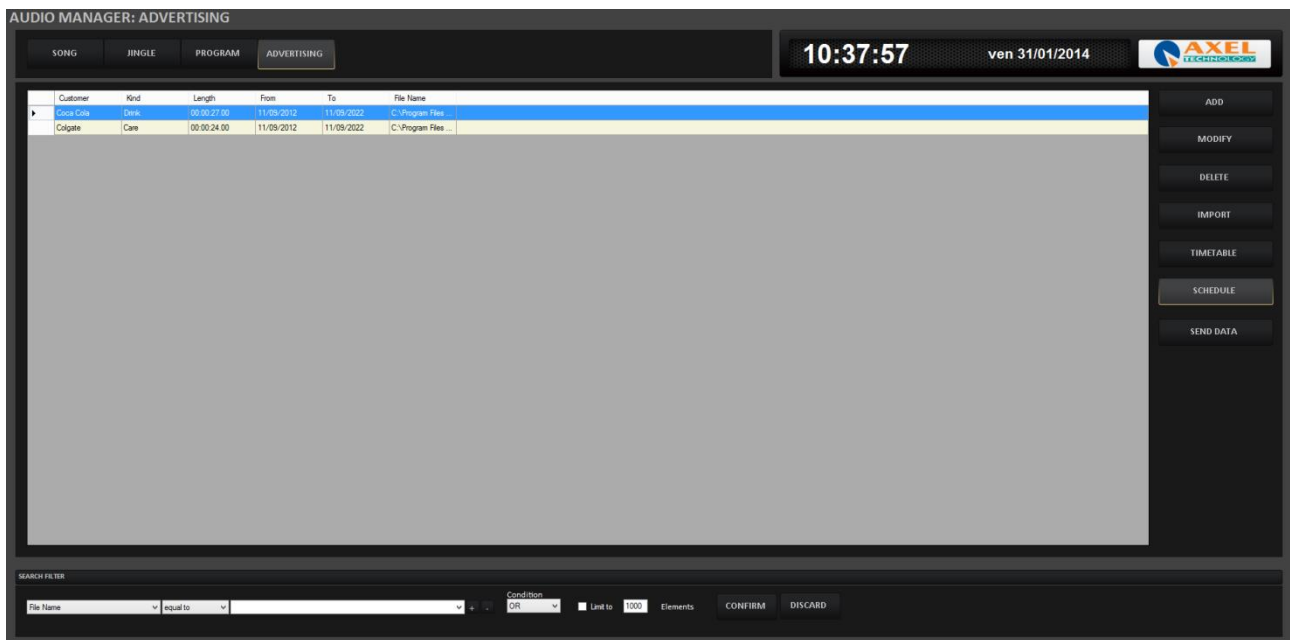


The screenshot shows a search interface with the following elements: a search bar containing 'Artist', a dropdown menu showing 'equal to', a plus sign button, a dropdown menu showing 'OR', a 'Limit to' field with the value '1000', the text 'elements', a 'CONFIRM' button, and a 'DISCARD' button.

A search tool is available to make searches inside the songs or audio database using filters.

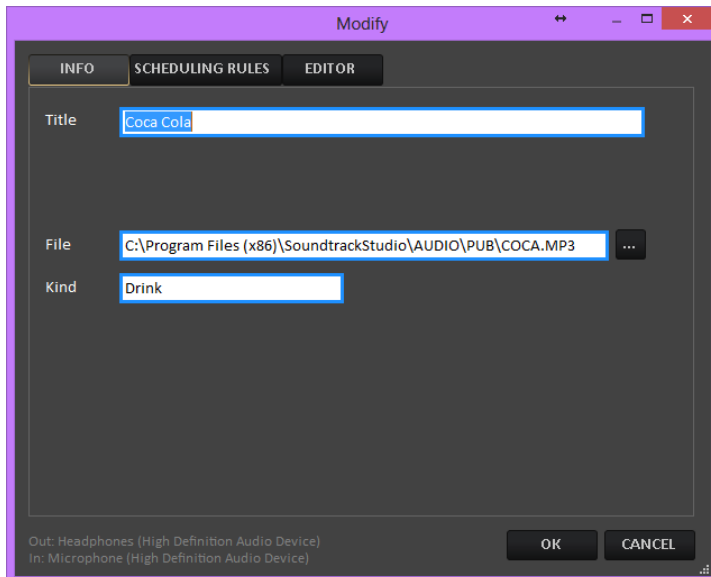
To add more filters press the + button.

## 4 ADVERTISING




Use the **ADD** button to schedule a new advertising.

### 4.1.1 METADATA



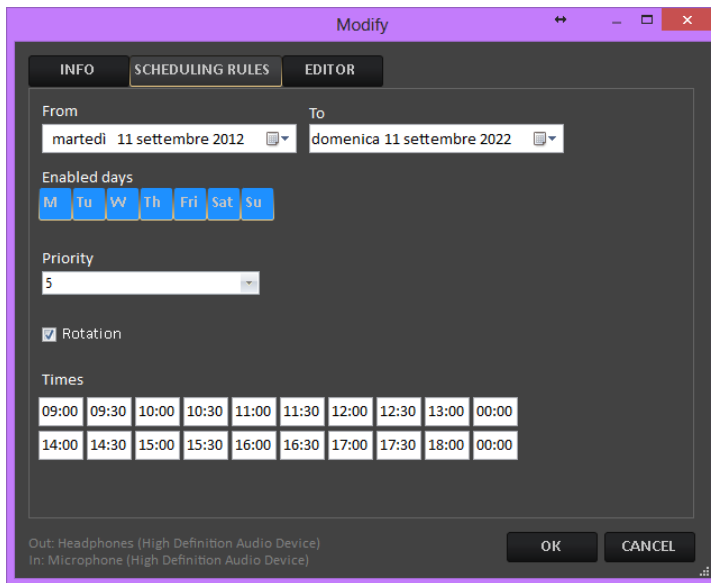
The fields highlighted in blue are compulsory.

**TITLE:** Name of the customer

**FILE:** Path of the spot file. It is possible to choose it using the search button 

**KIND:** Product category of the spot

## 4.1.2 SCHEDULING RULES



**FROM:** Date of start of the scheduling period

**TO:** Date of end of the scheduling period

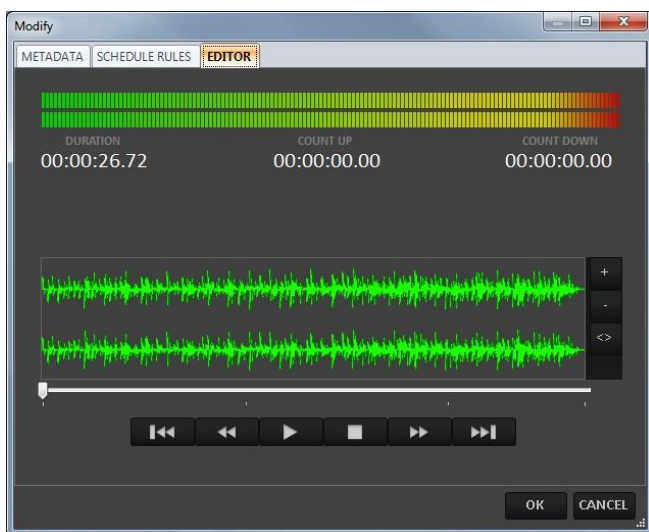
**ENABLED DAYS:** Select the days enabled for this scheduling

**PRIORITY:** Priority inside the cluster (example: 1 = first of the cluster; 5 = in the middle of the cluster; 9 = last of the cluster)

**ROTATION:** Different position inside the each cluster (with the other spots having the same priority).

**TIMES:** Hour points for this spot

## 4.1.3 EDITOR

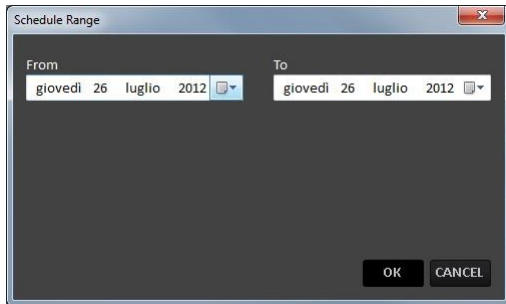


Allows to listen to the content of the file.

## 4.2 SEND DATA

Once the advertising schedule is complete, it is possible to **MODIFY** or **DELETE** it. The advertising list will be available for scheduling or broadcasting only after the data are sent.

To do this, use the **SEND** button.



It is possible to send more than one day, choosing the start and end date.

## 5 SCHEDULE MANAGER

SCHEDULE  
MANAGER

Click on the button  to open the scheduling section.

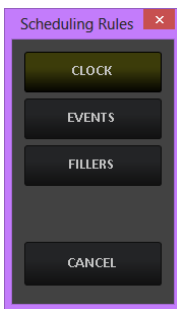
On Soundtrack Studio it is possible to create a daily schedule with random music or define pre-scheduling rules which will be used for the daily schedule.

DAILY  
SCHEDULE

SCHEDULING  
RULES

### 5.1 SCHEDULING RULES

Clicking on the **SCHEDULING RULES** button a new window will appear:



#### 5.1.1 CLOCK

The **CLOCK** is the pre-schedule that will be used by Soundtrack Studio to create the daily playlist (with the **DAILY SCHEDULE** button).

SCHEDULE MANAGER: CLOCK

DAILY SCHEDULE SCHEDULING RULES

11:55:31 ven 31/01/2014

COPY WEEK DELETE DAY Sunday 00:00\* DELETE TIME

Hour	Type	Description	Kind	Length
00:00:00	TimeSignal	TIME SIGNAL		00:00:06.03
00:00:06	Song		Pop	00:04:14.78
00:04:20	Jingle	Jingle 3		00:00:04.07
00:04:24	Song		Rock	00:04:08.98
00:08:33	Jingle		JINGLE	00:00:04.40
00:08:38	Song		Pop	00:04:14.78
00:12:53	Jingle	Jingle 3		00:00:04.07
00:12:57	Song		Rock	00:04:08.98
00:17:06	Jingle		JINGLE	00:00:04.40
00:17:10	Song		Pop	00:04:14.78
00:21:25	Jingle	Jingle 3		00:00:04.07
00:21:29	Song		Rock	00:04:08.98
00:25:38	Jingle		JINGLE	00:00:04.40
00:25:42	Song		Pop	00:04:14.78
00:29:57	Jingle	Jingle 3		00:00:04.07
00:30:01	Song		Rock	00:04:08.98
00:34:10	Jingle		JINGLE	00:00:04.40
00:34:15	Song		Pop	00:04:14.78
00:38:29	Jingle	Jingle 3		00:00:04.07
00:38:33	Song		Rock	00:04:08.98
00:42:42	Jingle		JINGLE	00:00:04.40
00:42:47	Song		Pop	00:04:14.78
00:47:02	Jingle	Jingle 3		00:00:04.07
00:47:06	Song		Rock	00:04:08.98
00:51:15	Jingle		JINGLE	00:00:04.40
00:51:19	Song		Pop	00:04:14.78
00:55:34	Jingle	Jingle 3		00:00:04.07
00:55:38	Song		Rock	00:04:08.98
00:59:47	Jingle		JINGLE	00:00:04.40

TOTAL 00:59:51.74

ADD CHANGE DELETE

⏪ ⏩

Select the day and hour to be scheduled.

Sunday 00:00

To insert a new song/audio press the **ADD** button.

Add

SPECIFIC AUDIO

RANDOM BY RULES

ADV CLUSTER

TIME SIGNAL

BROWSE

COMMAND

CANCEL

**SPECIFIC AUDIO** – It will open a window with the list of all the audio insertend on AUDIO MANAGER

Audio Manager

SONG	JINGLE	PROGRAM	ADVERTISING										
Title	Artist	Kind	Album	Year	National	Mark In	Intro	Mark Out	Length	Code	File		
The Boss	Diana Ross	Other		1979	<input checked="" type="checkbox"/>	00:00:00.00	00:00:15.00	00:03:26.00	00:03:46.00	0000001	C:\Program Files...		
Fantasy	Earth Wind and F...	Other		1978	<input type="checkbox"/>	00:00:16.00	00:00:37.00	00:03:34.00	00:03:44.00	0000002	C:\Program Files...		
Future Lovers	Madonna	Pop	Confessions on a...	2005	<input type="checkbox"/>	00:00:12.00	00:00:00.00	00:04:30.00	00:04:49.00	0000003	C:\Program Files...		
Pon De Replay L...	Rihanna	Pop		2006	<input type="checkbox"/>	00:00:00.00	00:00:10.00	00:03:45.00	00:04:05.00	0000004	C:\Program Files...		
Just feel better F...	Santana	Pop	All That I Am	2005	<input type="checkbox"/>	00:00:05.00	00:00:18.00	00:04:01.00	00:04:11.00	0000005	C:\Program Files...		
Accomp Qui	Blas Tofull	pop	Queen Tarentin	2012	<input type="checkbox"/>	00:00:00.00	00:00:00.00	00:00:00.00	00:00:00.00	0000006	C:\Users\lelea cr...		
Funkadelic	OTI	pop		2014	<input type="checkbox"/>	00:00:00.00	00:00:00.00	00:00:00.00	00:10:19.41	0000007	C:\Users\lelea cr...		
Crzy	Aesopsmith	pop		2014	<input type="checkbox"/>	00:00:00.00	00:00:00.00	00:00:00.00	00:05:16.89	0000008	C:\Users\lelea cr...		
Crym	Aesopsmith	Rock	Big Ones	1994	<input type="checkbox"/>	00:00:00.00	00:00:00.00	00:04:55.46	00:05:09.21	0000009	C:\Users\lelea cr...		
Jaded	Aesopsmith	pop		2014	<input type="checkbox"/>	00:00:00.00	00:00:00.00	00:00:00.00	00:03:35.04	0000010	C:\Users\lelea cr...		
Muñeca de vi...	Agata	pop		2014	<input type="checkbox"/>	00:00:00.00	00:00:00.00	00:00:00.00	00:03:39.61	0000011	C:\Users\lelea cr...		
Take on me	Aha	pop		2014	<input type="checkbox"/>	00:00:00.00	00:00:00.00	00:00:00.00	00:03:36.55	0000012	C:\Users\lelea cr...		
Square rooms	Al coffee	pop		2014	<input type="checkbox"/>	00:00:00.00	00:00:00.00	00:00:00.00	00:03:40.26	0000013	C:\Users\lelea cr...		
Let's stay together	Al green	pop		2014	<input type="checkbox"/>	00:00:00.00	00:00:00.00	00:00:00.00	00:03:11.86	0000014	C:\Users\lelea cr...		
You oughta know	Alanis morissette	pop		2014	<input type="checkbox"/>	00:00:00.00	00:00:00.00	00:00:00.00	00:04:06.49	0000015	C:\Users\lelea cr...		
Bozardo	Anna Tatangelo	pop		2014	<input type="checkbox"/>	00:00:00.00	00:00:00.00	00:00:00.00	00:03:44.28	0000016	C:\Users\lelea cr...		

To insertion a song/audio choose it from the list and double click on it.

**RANDOM BY RULES** – Allows the insertion of a song/audio by category (Genre). The title of the song (or audio) will be automatically chosen at the moment of the insertion on the On-Air playlist.

Random Audio

Type  
Songs

Criteria  
Other

Nationality  
 National  Foreign

Year  
 From  To

Total 2 / 572

OK CANCEL

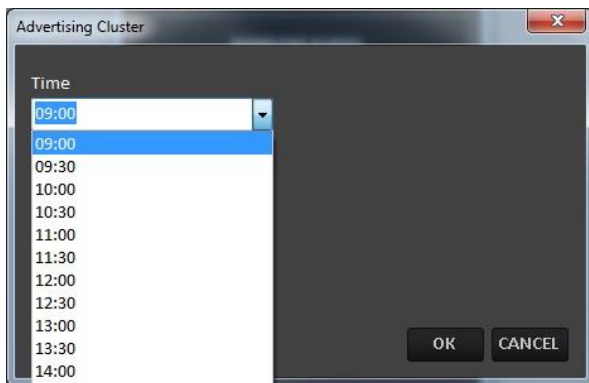


The parameters that can be chosen are:

- **TYPE:** It is possible to choose among Songs, Songs by Author, Jingles and Programs.
- **CRITERIA:** Allows to choose the KIND (category) of song, jingles or programs. The system will choose only among the audios that have that kind on their schedule (song manager)
- **NATIONALITY** (only for SONGS): It is possible to choose between National or Foreign. The system will choose only among the songs that have that nationality on their schedule (song manager).
- **YEAR** (only for SONGS): It is possible to define a Year range for the choice (e.g. only songs of a year between 1990 and 1999).

The **TOTAL** field will show the number of songs/audio which respect all the parameters.

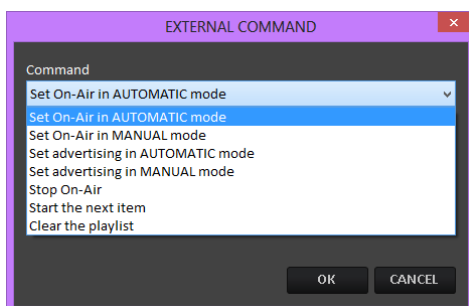
**ADV CLUSTER** – If the advertising playlist was correctly sent, it allows to choose a cluster among the ones available



**TIME SIGNAL** –Insert a time signal

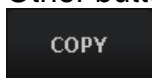
**BROWSE** – Allows the insertion of an audio file not scheduled on Audio Manager

**COMMAND-** Allows the insertion of a special command



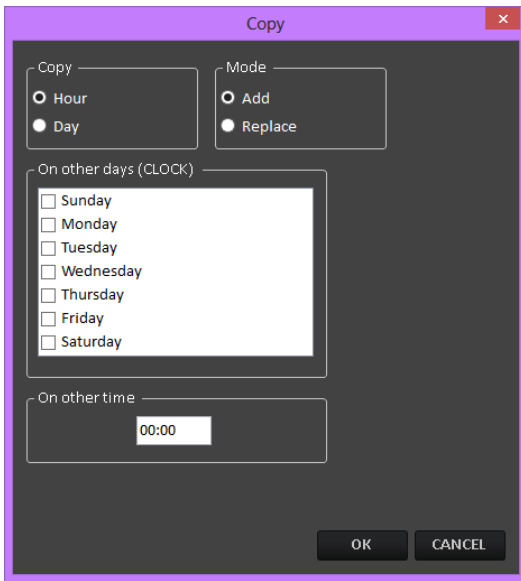
When the command will be executed on air, the system will do what asked by the command.

Other buttons:

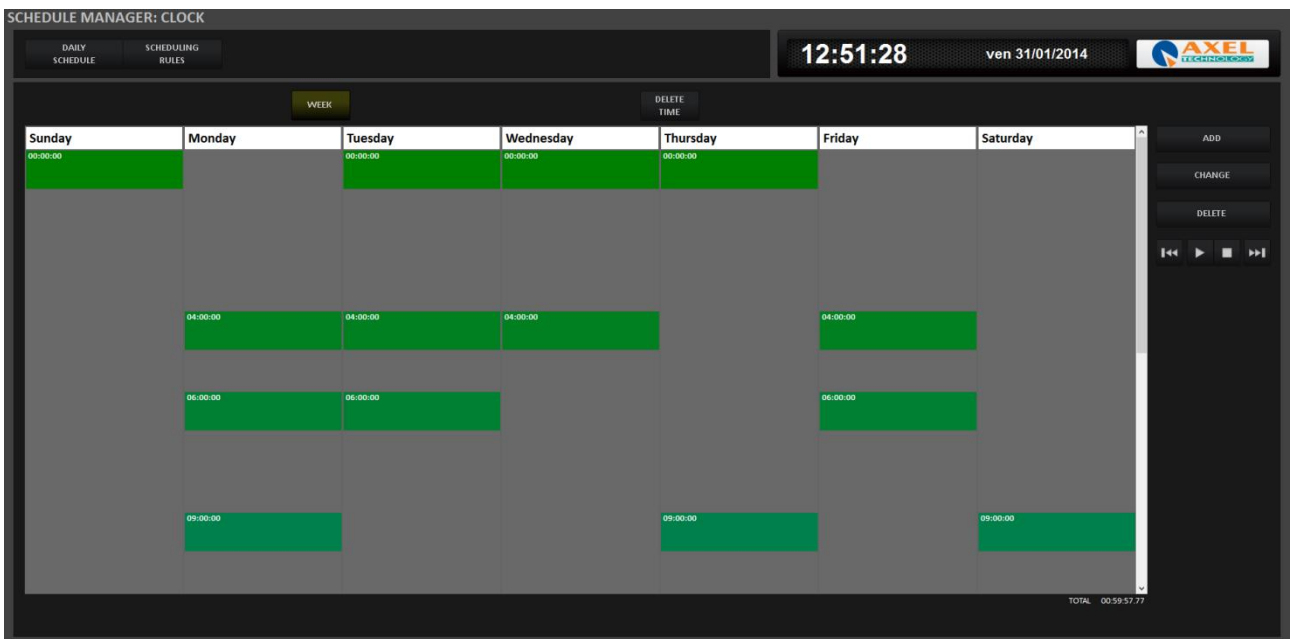


Allows to copy or replace a scheduling into another time or day.

Open the clock you want to copy (for example Sunday 00:00), then press the **COPY** button, and it will appear a new window where it is possible to choose where to copy the selected clock.



**WEEK** Shows a weekly grid of the filled clocks



The green fields are clock that contain a scheduling (at least one audio), the grey space is not scheduled with rules (clocks empty).

NB. If you double click on a green field, it will open the corresponding clock.

To close the **WEEK** grid and come back to the scheduling window, click again on the **WEEK** button.

**DELETE DAY** Allows to delete all the clocks of the selected day.

Select first the day of the week you want to delete from the drop down menu



**DELETE TIME** Allows to delete the selected clock.

Select first the day of the week and the time (clock) you want to delete from the drop down menu.

**CHANGE**

To change an item on the playlist

**DELETE**

To delete an item from the playlist



To listen an item on the playlist

### 5.1.2 EVENTS

All the audio/songs scheduled in the **EVENTS** section, will be inserted by the automation directly on the on-air playlist but not before the time they are scheduled.

Example: If on Monday 09.00 there is a TIME SIGNAL scheduled, every Monday at 09.00 on-air will insert a TIME SIGNAL at the end of the audio/song playing at that moment.

The scheduling of the **EVENTS** section is the same as **CLOCK**.

### 5.1.3 FILLERS

In the absence of a **DAY SCHEDULING** (or in the event of a playlist too short), the on-air will fill the playlist using the **FILLERS** schedule.

The insertion of events on the **FILLERS** section is the same as **CLOCK** and **EVENTS**.

Every **FILLERS** scheduling will be repeated in loop (changing the songs if you schedule **RANDOM BY RULES**) until the system will meet a new scheduling.

EXAMPLE:

On Sunday 00:00 we schedule:

Song of kind ROCK

Jingle

Song of kind POP

On Sunday 07:00 we schedule:

Song of kind RECURRENT

On Sunday 09.00 we schedule:

Song of kind POP

Jingle

Song of kind POP

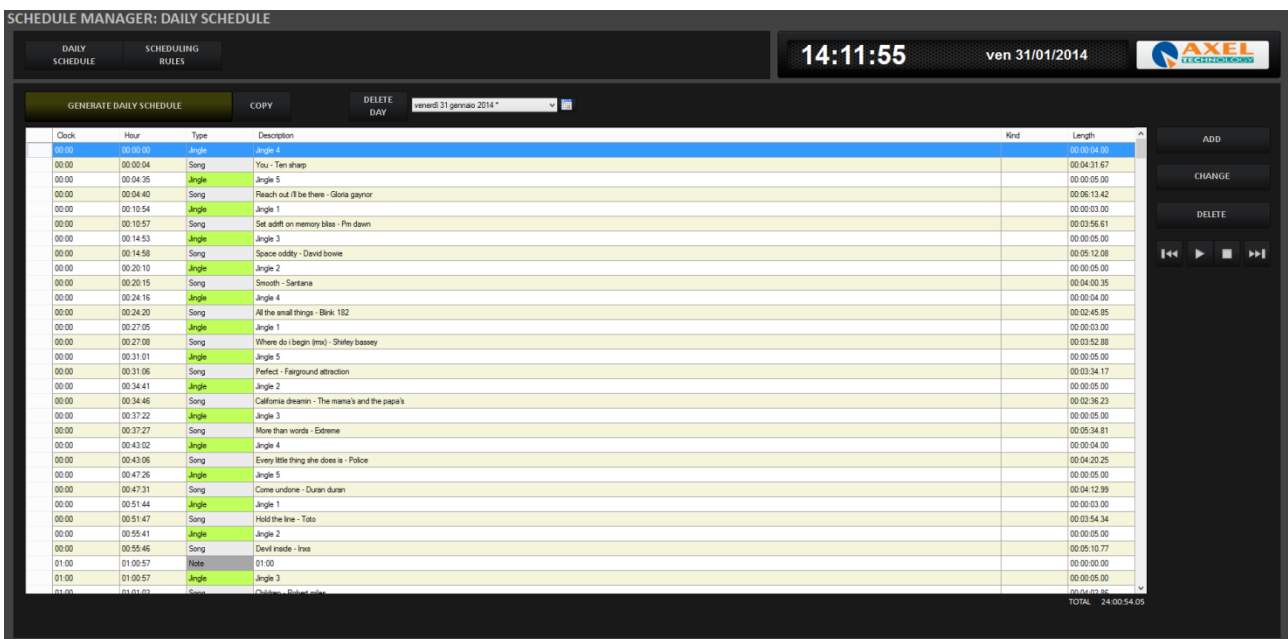
What the on air will play will be: From midnight ROCK song, followed by a jingle and followed by a song POP, then again ROCK – Jingle – POP until 07.00. From 07AM the on air will play only RECURRENT songs without jingles and from 09AM the on air will play song POP, jingle, Song POP then again POP – jingle – POP.

**NOTE:** It is not necessary to schedule fillers for every day and every hour. It is enough to have at least one line in one day in one hour to fill in event of lack of playlist. Anyway, if you want to fill with different genre of songs for each day/hour, you can fill one or more days/hours.

## 5.2 DAILY SCHEDULE

Click on  to go to the section.

button to create the scheduling of a whole day (based on scheduling rules, if set before).

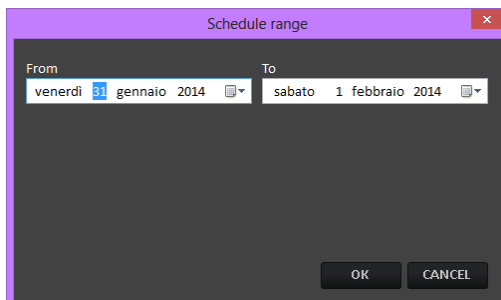


Check	Hour	Type	Description	Kind	Length
00:00	00:00:00	Jingle	Jingle 4		00:00:04.00
00:00	00:00:04	Song	You - Ten sharp		00:04:31.67
00:00	00:04:35	Jingle	Jingle 5		00:00:05.00
00:00	00:04:40	Song	Reach out I'll be there - Gloria gaynor		00:06:13.42
00:00	00:10:54	Jingle	Jingle 1		00:00:03.00
00:00	00:10:57	Song	Set adrift on memory blues - Pin dawn		00:03:56.61
00:00	00:14:53	Jingle	Jingle 3		00:00:05.00
00:00	00:14:58	Song	Space oddy - David bowie		00:05:12.08
00:00	00:20:10	Jingle	Jingle 2		00:00:05.00
00:00	00:20:15	Song	Smooth - Santana		00:04:03.35
00:00	00:24:16	Jingle	Jingle 4		00:00:04.00
00:00	00:24:20	Song	All the small things - Blink 182		00:02:45.85
00:00	00:27:05	Jingle	Jingle 1		00:00:03.00
00:00	00:27:08	Song	Where do i begin (ms) - Shiley bassey		00:03:52.88
00:00	00:31:01	Jingle	Jingle 5		00:00:05.00
00:00	00:31:06	Song	Perfect - Fairground attraction		00:03:34.17
00:00	00:34:41	Jingle	Jingle 2		00:00:05.00
00:00	00:34:46	Song	California dreamin - The mama's and the papa's		00:02:36.23
00:00	00:37:22	Jingle	Jingle 3		00:00:05.00
00:00	00:37:27	Song	More than words - Edrene		00:05:34.81
00:00	00:43:02	Jingle	Jingle 4		00:00:04.00
00:00	00:43:06	Song	Every little thing she does is - Police		00:04:03.25
00:00	00:47:26	Jingle	Jingle 5		00:00:05.00
00:00	00:47:31	Song	Come undone - Duran duran		00:04:12.99
00:00	00:51:44	Jingle	Jingle 1		00:00:03.00
00:00	00:51:47	Song	Hold the line - Toto		00:03:54.34
00:00	00:55:41	Jingle	Jingle 2		00:00:05.00
00:00	00:55:46	Song	Devil inside - Inez		00:05:10.77
01:00	01:00:57	Note	01:00		00:00:00.00
01:00	01:00:57	Jingle	Jingle 3		00:00:05.00
01:00	01:01:02	Song	Chasing Rain - Jolie		00:01:02.00

Click on **GENERATE DAILY SCHEDULE**

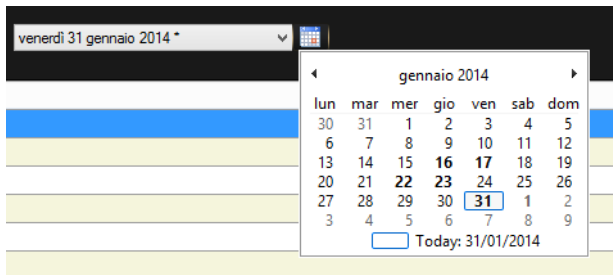


Then choose the date from and to of the day (or days) you want to create and click on OK



The daily playlist will be automatically created.

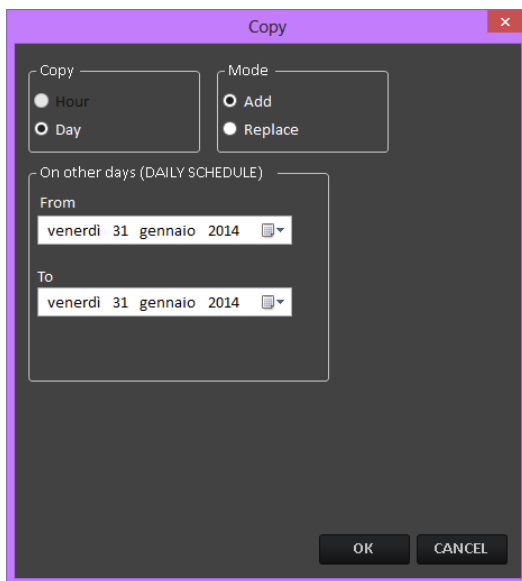
To visualize the playlist of a specific day, select the day from the calendar menu:



Other buttons:

**COPY**

Allows to copy the playlist of one day into another date



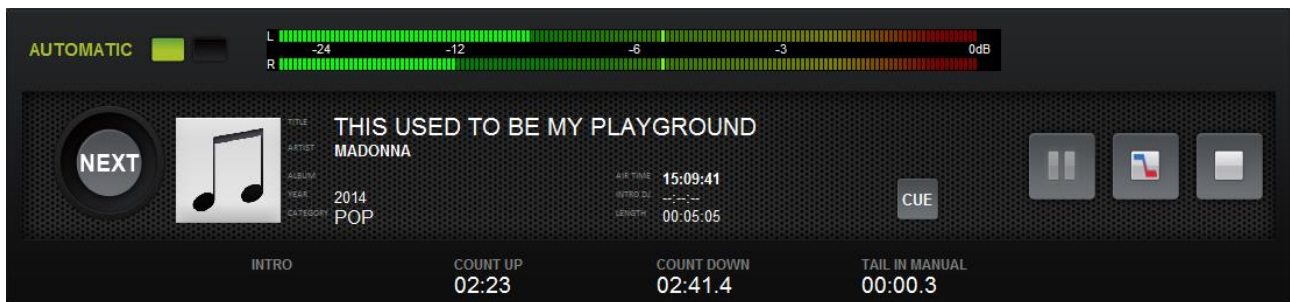
**DELETE  
DAY**

Allows to delete the playlist of the day selected on the calendar menu

## 6 ON-AIR



The On-Air module will open and start automatically when you run Soundtrack Studio  
The song playing now is on the top of the screen



Automatic/Manual switch



Pause the song On-Air (to restart playing, click Pause again)



Stop the song On-Air with a fade effect



Stop the song On-Air and switch to Manual mode

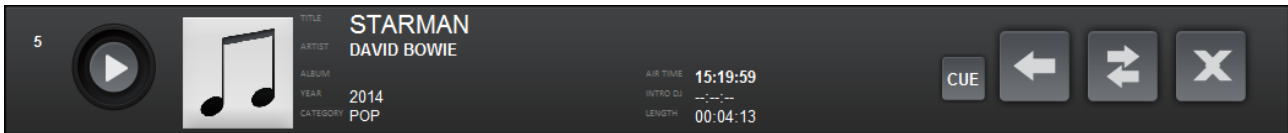


Skip to the next item on playlist.

**CUE**

Put the song in CUE panel to allow the pre-listening

The other songs of the playlist are listed below the one playing:



Start playing this song



Insert another audio on the playlist (it will open the audio manager)



Change the song/audio with another audio (it will open the audio manager)

The INSERT and CHANGE buttons will open the INSERT panel down on the right

INSERT							
SONG	JINGLE	PROGRAM	ADVERTISING	TIME SIGNAL	BROWSE		
Title	Artist	Kind	Album	Year	National	Mark In	
The power of love	Frankie goes to h...	pop		2014	<input type="checkbox"/>	00:00:00.00	
The reason	Hoobastank	pop		2014	<input type="checkbox"/>	00:00:00.00	
The riddle	Nik kershaw	pop		2014	<input type="checkbox"/>	00:00:00.00	
The saints are co...	U2 & green day	rock		2014	<input type="checkbox"/>	00:00:00.00	
The seed	The roots	rock		2014	<input type="checkbox"/>	00:00:00.00	
The time is now	Moloko	pop		2014	<input type="checkbox"/>	00:00:00.00	
The unforgiven	Metallica	pop		2014	<input type="checkbox"/>	00:00:00.00	
▶ These boots are ...	Planet funk	rock		2014	<input type="checkbox"/>	00:00:00.00	

The buttons **SONG**, **JINGLE**, **PROGRAM**, **ADVERTISING**, **TIME SIGNAL**, **BROWSE** allow the insertion of the items on the On-Air playlist.

**SONG**, **JINGLE**, **PROGRAM**, **ADVERTISING** will open the related database.

To insert an item, double click on it or drag and drop it on the playlist

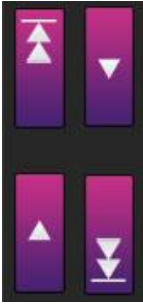
It is possible to sort the list order by any column just clicking on the column title.

**TIME SIGNAL** will insert a time signal directly in playlist

**BROWSE** will open a browse window to insert an audio not contained on Soundtrack databases. To insert an item, drag and drop it on the playlist.



Delete the song/audio



Move up and down on the playlist



Changes the playlist view. The “grid” view of the playlist is the following:

1	SCH...	AIR TIME	TITLE - ARTIST	LENGTH
2	15:00	15:29:30	Jingle 3 - JINGLE	00:00:03
3	15:00	15:29:34	Wanna be startin' something - Michael Jackson	00:05:21
4	15:00	15:34:59	Jingle 1 - JINGLE	00:00:03
5	15:00	15:34:58	Wind of change - Scorpions	00:05:09
6	15:00	15:40:08	Jingle 2 - JINGLE	00:00:03
7	15:00	15:40:11	Change - Live steamfield	00:04:51
8	15:00	15:44:43	Jingle 4 - JINGLE	00:00:03
9	15:00	15:44:46	Oye como va - Santana	00:04:10
10	15:00	15:48:05	Jingle 5 - JINGLE	00:00:04
11	15:00	15:48:09	Take on me - A.ha	00:03:36
12	15:00	15:52:49	Jingle 2 - JINGLE	00:00:03
13	15:00	15:52:49	Wrapped around your finger - Police	00:05:11
14	15:00	15:58:02	Jingle 4 - JINGLE	00:00:03
15	15:00	15:58:06	That's what friends are for - Dionne warwick	00:04:14
16	15:00	16:02:20	Jingle 3 - JINGLE	00:00:03
17	15:00	16:02:24	Woman in chains - Tears for fears	00:06:30
18	15:00	16:06:55	Jingle 5 - JINGLE	00:00:04
19	15:00	16:08:59	Bastardo - Anna Tatangelo	00:03:43
20	15:00	16:12:43	Jingle 1 - JINGLE	00:00:02
21	15:00	16:12:46	Planet Funk - These boots are made for walking	00:03:05
22	15:00	16:15:51	Jingle 4 - JINGLE	00:00:03
23	15:00	16:15:54	Enjoy the silence - Depeche mode	00:04:18
24	15:00	16:20:13	Jingle 3 - JINGLE	00:00:03
25	15:00	16:20:17	Cars and girls - Prefab sprout	00:04:29

The advertising command are shown on top right:

**ADVERTISING**

AUTOMATIC [Green bar]

NEXT **15:30**

← TIME TO NEXT: 00:04:29.13

LENGTH: 00:51.02

SHOW DETAILS



Automatic/Manual switch. If set on AUTOMATIC mode, the cluster, as soon as it reaches the time when it is scheduled, will be played at the end of the audio playing at that moment.

When it reaches the time of a cluster, the cluster time will turn into yellow.

If the ADVERTISING panel is set on MANUAL mode, when it reaches the scheduled time of a cluster, it will turn the cluster time into yellow and add a PLAY button

**ADVERTISING**

MANUAL [Red bar]

NEXT **15:30**

← [Play button] TIME TO NEXT: 00:51.02

LENGTH: 00:51.02

SHOW DETAILS

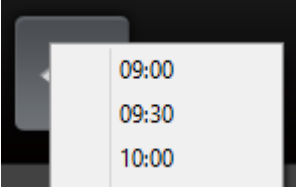




When enabled, plays immediately the cluster



Insert a cluster. It will open the list of the available clusters for the current day.

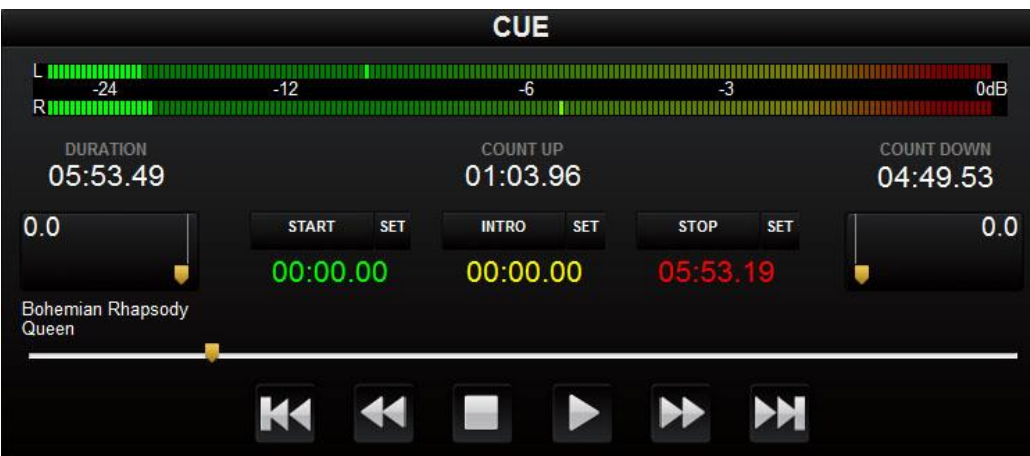


Show details about the content of the cluster on the **CUE** window.



Hide advertising details and restore the **CUE** window

On the **CUE** window it is possible to pre-listen the audio and modify **START**, **INTRO**, **STOP**, **FADE IN** and **FADE OUT** only for that instance of the audio (does not change the values set on the **AUDIO MANAGER**):



To change **START**, **INTRO** and **STOP** points, position the play cursor on the point and click **SET**.

To modify the **FADE IN** and **FADE OUT**, just move the corresponding cursor.



The **HOT KEYS** module is on the bottom right:



To **PLAY** an audio from the **HOT KEYS**, just click on the corresponding button.

To **INSERT** an audio on the **HOT KEYS**, drag it from the playlist on the left and drop it on the corresponding button.

The **HOT KEY** configuration can be saved using the **SAVE PAGE** button and all the saved configurations can be recalled using the **LOAD PAGE** button.

Enabling the **DELETE KEY** button it is possible to delete the content of the buttons by clicking on every single button you want to delete.

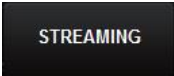
## 7 PRESENTATION MODE

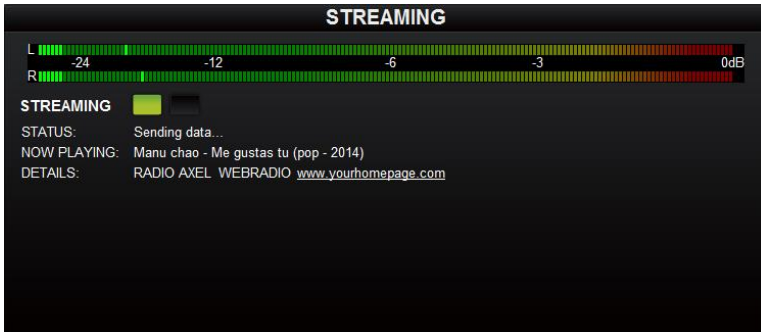
It will show a full screen view of the title of the song on-air and the remaining time to the end



To exit the presentation mode, press the **ESC** button on the keyboard.

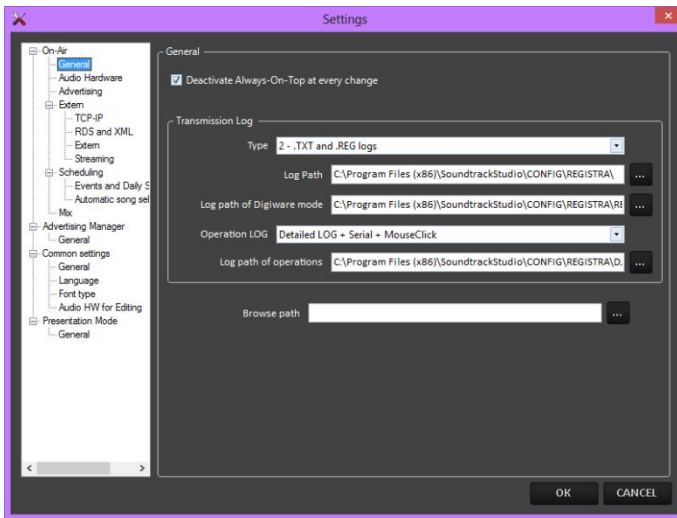
## 8 STREAMING

Clicking on the  button it will show the streaming panel on the On-Air



For Streaming settings, read the SETTINGS section of this manual.

## 9 SETTINGS



### 9.1 ON-AIR

#### 9.1.1 General

**Deactivate Always-On-Top at every change:** If disabled, at every change of item playing on air, it will bring the On-Air panel over all the other windows

#### Transmission Log

**Type:** choose among different levels of transmission logs

**Log Path:** Path where the transmission logs will be saved

**Log Path of Digiware mode:** Path where the transmission logs used to create registers with Digiware will be saved

**Operation LOG:** choose among different levels of user's operations log

**Log path of operations:** Path where the operation log will be saved

**Browse path:** Default path for the BROWSE button when you insert an audio on the On-Air

#### 9.1.2 Audio Hardware

##### Out

**Device list type:** choose the device list type to be used for playouts

**OnAir audio output:** Choose the sound card output for the main playout (On-Air)

**CUE:** Choose the sound card output for the CUE

**Hot Keys:** Choose the sound card output for the Hot Keys

**Monitor Out:** Choose the sound card output for the Monitor Out

##### In

**Monitor In:** Choose the sound card output for the Monitor In

#### 9.1.3 Advertising

**Advertisement Playlist Path:** Path where the Advertisement playlist will be saved

**For each advertising cluster**

**Ready nn seconds before scheduled time:** The advertising cluster will be ready nn seconds before the scheduled time.

**Color** (default Green): Color of the NEXT cluster time on the advertising panel of the On-Air when the cluster is READY

**Warning:**

**At scheduled time. Color** (default Yellow): Color of the NEXT cluster time on the advertising panel of the On-Air when the cluster arrives at the SCHEDULED TIME

**Alert nn seconds after scheduled time:** The NEXT cluster time will change color after nn seconds after the scheduled time.

**Color** (default Red): Color of the NEXT cluster time after nn seconds after scheduled time.

**Force nn seconds after Alert time:** After nn seconds after ALERT time, the On-Air will force the cluster (it will cut the audio on air and play the adverts).

**Certification**

**Enable:** Enables the certification file that compares scheduled time and date and air time and date of the adverts.

**One file per day:** If enabled, Soundtrack will write one file for each day for certification

#### 9.1.4 Extern

##### 9.1.4.1 TCP-IP

**Enabled:** Enables TCP-IP settings

**Server:** IP address of the TCP-IP server

**Port:** Server port used for TCP-IP connection

**Client port:** Client port used for TCP-IP connection

**Timeout:** Validity time (in milliseconds) of the TCP-IP command

**External Terminal:** Enables the communication with an external terminal

**Start External Terminal at the program startup:** If enabled the communication with External Terminal will start automatically at every Soundtrack startup

**Header:** Path of the .XML file with all the data for the External Terminal

##### 9.1.4.2 RDS and XML

**XML File:** Path of the .XML file that provides information regarding the song on air to RDS or streaming.

##### 9.1.4.3 Extern

**Multi I/O Mode:** Command to be executed by the Multi I/O contact

**MOXA - address:** IP address of the MOXA device

**MOXA – port:** Port used by the MOXA device

**MOXA – Timeout:** Validity time (in milliseconds) of the multi I/O command

##### 9.1.4.4 Streaming

**Source**

**Soundtrack studio:** Enable if the source of the streaming is Soundtrack output itself

**Input card:** Enable if the source of the streaming comes from another input card

### **SHOUTcast server**

**Server:** IP address of the SHOUTcast server

**Port:** Port used on the SHOUTcast server

**Password:** Password of the SHOUTcast server

### **SHOUTcast info**

**Name:** Name of the radio

**Kind:** Kind of the radio

**Your homepage:** website homepage of the radio

**Publish:** Enable if you want to publish Title and Artist of the song on air on the website

### **Encoder Settings**

**Frequency:** Frequency of the streaming (Hz)

**Bitrate:** Bitrate of the streaming (kbps)

**Mode:** Stereo or mono

## **9.1.5 Scheduling**

### **9.1.5.1 Events and daily schedule**

#### **Daily schedule load mode at startup**

It is possible to choose among:

**0 – none:** At the startup Soundtrack will not load the daily playlist until someone click on the UPD button

**1 – Load from the begin of the last clock until the end of the day**

**2 – Load from the begin of the last clock until the end of the clock**

**3 – Load from the current time in the last clock until the end of the clock**

### **9.1.5.2 Automatic song selection**

**Control time for artists repetition (hours):** Hours that must separate two passages of the same artist

**Control time for songs repetition (hours):** Hours that must separate two passages of the same song

## **9.1.6 Mix**

**Default fadeout:** Default fadeout if not set on the song schedule

**AGC (Auto Gain Control):** If enabled, an internal processor will automatically keep the volume at a constant level in order to avoid distortion

## **9.2 ADVERTISING MANAGER**

### **9.2.1 General**

**Advertisement Export Path:** Pth of the .txt file stat will contain the advertisement daily playlist

**Starting Jingle:** Jingle that will be automatically inserted at the beginning of every cluster

**Separator Jingle:** Jingle that will be automatically inserted between adverts to separate them.

**Ending Jingle:** Jingle that will be automatically inserted at the end of every cluster

## 9.3 COMMON SETTINGS

### 9.3.1 General

**Reset “Do not show this message again”:** this button will restore all the message box hidden by the “do not show again” selection

**Resete columns order/size:** this button will restore the original order and size of the columns

#### **Get Info API**

**Type:** Select where to retrieve the song information when press the **GET INFO** button on the song schedule (see **AUDIO MANAGER** section)

### 9.3.2 Language

Select the Soundtrack Studio language

### 9.3.3 Font Type

**Activate custom font for ALL the Soundtrack programs and ALL the users:** if selected it will allow the customization of the font

**Font Type:** Select the font type from the list

**Font scale factor:** Choose the scale factor to enlarge or reduce the font

### 9.3.4 Audio HW for Editing

**Device list type:** Select the device to be used for the audio editor

**Output:** Select the output to be used for the audio editor

**Input:** Select the input to be used for the audio editor

## 9.4 PRESENTATION MODE

**Data path:** Path of the temporary files with data for the Presentation Mode

**Logo image:** Image (e.g Radio Logo) that will be shown on the Presentation Mode

**Text:** Text that will be shown on the Presentation Mode

**Data refresh (ms):** Milliseconds for refresh of the data

**Animation refresh (ms):** Duration (milliseconds) of the animation



## 10 UPD

The **UPD** button is necessary to force the loading of the daily playlist (after changes on the today playlist) or to force the loading of the adverts playlist (after changes on the today adverts scheduling)

## 11 LOCK

The **LOCK** button allows to lock the On-Air panel to prevent accidental changes to the playlist (it locks all the keyboard and mouse commands).

When the LOCK button is pressed, the On- Air panel will change its aspect:

The screenshot displays the Soundtrack Studio On-Air panel interface. At the top left, there is a volume meter labeled 'AUTOMATIC' with a scale from -24 to 0dB. The main playlist area shows the following tracks:

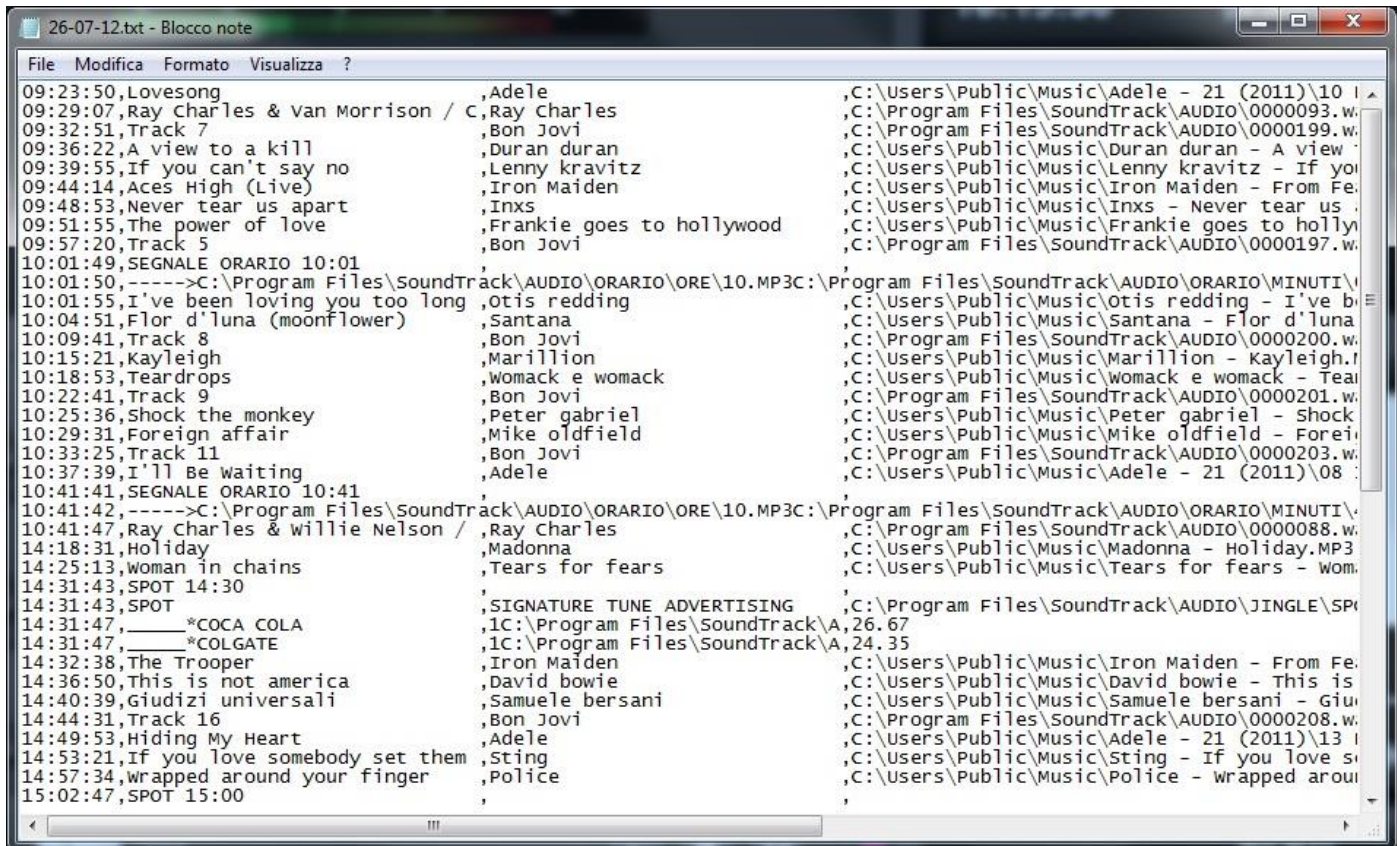
Track No.	Track Name	Artist	Year	Genre	Start Time	End Time
1	BOHEMIAN RHAPSODY	QUEEN	2014	ROCK	12:50:59	00:55:52
2	JINGLE 3	JINGLES	2014	POP	12:56:52	00:09:03
3	HOME	DEPECHE MODE	2014	POP	12:56:56	00:05:11
4	2 TIMING TOUCH	THE HIVES	2014	ROCK	13:02:07	00:02:00
5	5 O' CLOCK IN THE MORNING	VILLAGE PEOPLE	2014	ROCK	13:04:07	00:04:58
6	74-75	THE CONNELLS	2014	ROCK	13:09:06	00:04:10
7	A DIFFERENT CORNER	GEORGE MICHAEL	2014	POP	13:13:16	00:03:54

At the top right, the time is 12:53:26 and the date is mar 04/02/2014. The 'ADVERTISING' section shows 'NEXT' at 13:00, with a 'TIME TO NEXT' of 00:06:33.16 and a 'LENGTH' of 00:51.02. A 'SHOW DETAILS' button is present. Below this is a 'CUE' section and a 'HOT KEYS' section. At the bottom right, there are 'UNLOCK' and 'EXIT' buttons. The bottom status bar shows '003163 - 15.2' and '3.1.0.1 ST'.

To unlock the panel, click on the **UNLOCK** button.

## 12 LOG

It will open, in a new window, the list of all the audio/songs broadcasted in the current day.



```

File  Modifica  Formato  Visualizza  ?
09:23:50,Lovesong ,Adele ,C:\Users\Public\Music\Adele - 21 (2011)\10 I
09:29:07,Ray Charles & van Morrison / C ,Ray Charles ,C:\Program Files\SoundTrack\AUDIO\0000093.w
09:32:51,Track 7 ,Bon Jovi ,C:\Program Files\SoundTrack\AUDIO\0000199.w
09:36:22,A view to a kill ,Duran duran ,C:\Users\Public\Music\Duran duran - A view
09:39:55,If you can't say no ,Lenny kravitz ,C:\Users\Public\Music\Lenny kravitz - If yo
09:44:14,Aces High (Live) ,Iron Maiden ,C:\Users\Public\Music\Iron Maiden - From Fe
09:48:53,Never tear us apart ,Inxs ,C:\Users\Public\Music\Inxs - Never tear us
09:51:55,The power of love ,Frankie goes to hollywood ,C:\Users\Public\Music\Frankie goes to holly
09:57:20,Track 5 ,Bon Jovi ,C:\Program Files\SoundTrack\AUDIO\0000197.w
10:01:49,SEGNALE ORARIO 10:01 , ,
10:01:50,----->C:\Program Files\SoundTrack\AUDIO\ORARIO\ORE\10.MP3C:\Program Files\SoundTrack\AUDIO\ORARIO\MINUTI\
10:01:55,I've been loving you too long ,Otis redding ,C:\Users\Public\Music\Otis redding - I've b
10:04:51,Flor d'luna (moonflower) ,Santana ,C:\Users\Public\Music\Santana - Flor d'luna
10:09:41,Track 8 ,Bon Jovi ,C:\Program Files\SoundTrack\AUDIO\0000200.w
10:15:21,Kayleigh ,Marillion ,C:\Users\Public\Music\Marillion - Kayleigh.r
10:18:53,Teardrops ,Womack e womack ,C:\Users\Public\Music\Womack e womack - Tear
10:22:41,Track 9 ,Bon Jovi ,C:\Program Files\SoundTrack\AUDIO\0000201.w
10:25:36,Shock the monkey ,Peter gabriel ,C:\Users\Public\Music\Peter gabriel - Shock
10:29:31,Foreign affair ,Mike oldfield ,C:\Users\Public\Music\Mike oldfield - Forei
10:33:25,Track 11 ,Bon Jovi ,C:\Program Files\SoundTrack\AUDIO\0000203.w
10:37:39,I'll Be waiting ,Adele ,C:\Users\Public\Music\Adele - 21 (2011)\08
10:41:41,SEGNALE ORARIO 10:41 , ,
10:41:42,----->C:\Program Files\SoundTrack\AUDIO\ORARIO\ORE\10.MP3C:\Program Files\SoundTrack\AUDIO\ORARIO\MINUTI\
10:41:47,Ray Charles & willie Nelson / ,Ray Charles ,C:\Program Files\SoundTrack\AUDIO\0000088.w
14:18:31,Holiday ,Madonna ,C:\Users\Public\Music\Madonna - Holiday.MP3
14:25:13,woman in chains ,Tears for fears ,C:\Users\Public\Music\Tears for fears - wom
14:31:43,SPOT 14:30 , ,
14:31:43,SPOT , ,
14:31:47,_____*COCA COLA ,SIGNATURE TUNE ADVERTISING ,C:\Program Files\SoundTrack\AUDIO\JINGLE\SP
14:31:47,_____*COLGATE ,C:\Program Files\SoundTrack\A,26.67
14:32:38,The Trooper ,Iron Maiden ,C:\Users\Public\Music\Iron Maiden - From Fe
14:36:50,This is not america ,David bowie ,C:\Users\Public\Music\David bowie - This is
14:40:39,Giudizi universali ,Samuele bersani ,C:\Users\Public\Music\Samuele bersani - Giu
14:44:31,Track 16 ,Bon Jovi ,C:\Program Files\SoundTrack\AUDIO\0000208.w
14:49:53,Hiding My Heart ,Adele ,C:\Users\Public\Music\Adele - 21 (2011)\13 I
14:53:21,If you love somebody set them ,Sting ,C:\Users\Public\Music\Sting - If you love s
14:57:34,wrapped around your finger ,Police ,C:\Users\Public\Music\Police - wrapped arou
15:02:47,SPOT 15:00 , ,

```

## 13 EXIT

The **EXIT** button will close Soundtrack Studio.