



Standz 2 by Jenx

A versatile standing system offering prone or supine standing that accommodates abducted or neutral leg positioning for children between 5 - 14 years



Always Supportive...

Standz 2 by Jenx

More than just a scaled up version of the original Standz, size 2 offers function and accessories that are appropriate for an older, taller, heavier and stronger user whilst keeping the much loved simplicity of adjustment and use found on Standz.

Functional features and accessories recognise the needs of older users and also keep the product simple and safe for care providers to use. A number of accessories and features have been developed as a result of feedback from global clinicians and parents. Continuing with the core principals of clinically correct positioning, Standz 2 allows for clinicians to support older children and adolescents as they move from postural development through to postural maintenance.

Standz 2 keeps all the versatility of the original Standz and completes the family standing products offering upright, prone and supine standing in either a neutral or abducted leg position.



Showing Standz 2 in Prone

INNOVATIVE FEATURE

Cable Operated Tilt-in-Space

Standz 2 offers a dedicated hand-operated lever which allows adjustment of the frame through infinite angle adjustments from 0-90° with the built-in angle gauges. A safety latch on the lever prevents the frame angle being adjusted accidentally.

INNOVATIVE FEATURE

Trunk Support Options

Optional **Shoulder Protractors** encourage correct shoulder and arm positioning to help promote a functional hand position for play or learning. An optional **Waistcoat Harness** provides additional trunk support for children with low tone.

INNOVATIVE FEATURE

Antimicrobial Covers

As standing aids the digestive system and gravity can take it's course, our covers have been designed to wipe clean, they also contain an antimicrobial agent to aid infection control, ideal for clinic or multi-user environments.

INNOVATIVE FEATURE

Individual Leg Abduction

Standz 2 offers the ability to independently adjust either leg from 0° – 30° of abduction depending on the child's clinical needs. Simply adjusted via a locking pin, this action is quick and simple to adjust for each standing session. An incorporated angle gauge makes it easy to see the degree of abduction for each leg which can be adjusted in 5° increments.

INNOVATIVE FEATURE

Frame Mounted Carer Foot Inlays

To enable the carer a stable point of contact when adjusting the tilt-in-space angle, the frame features built-in foot inlays.

INNOVATIVE FEATURE

Individual Leg Adjustment

Adjustment for both knee and footplate height – ideal for accommodating leg length discrepancy. This tool free adjustment can be made in seconds and securely clamps into place using our clever clamping marquee design.

INNOVATIVE FEATURE

Angle Gauges

Built in angle gauges for frame angle and individual leg abduction - easy to read gauges enable precise positioning and allow for the correct position to be repeatedly achieved.

INNOVATIVE FEATURE

Tool Free Adjustments

No more hunting for the right sized allen key, cleverly designed wing knobs and adjustment pins offer the ability to make adjustments with minimal effort – meaning growth adjustments have never been easier.



Standz Colour Options



Always Configurable Accessories

As standard each base comes with:

- 4 lockable swivel castors
- Tilt mechanism with dedicated release lever on handle with incorporated safety lock
- 2 leg posts clearly marked with numbers for easy positioning of leg supports
- 0° – 30° independent abduction movement of leg posts in 5 degree increments with easy to use locking plunger
- Individual footplates with plantar and dorsiflexion movement
- Angle gauge to read frame angle – frame angle range of 5° – 90°
- Pelvic support board and cover pad in a choice of 5 colours
- Trunk support board and cover pad in choice of 5 colours

Flat Pad Head Support

A simple yet effective head support pad for use in supine for children with reasonable head control. It can also be used in prone to extend the height of the chest pad.

Oval PU Head Support

Simple headrest for children who require minimal head support. Comes mounted on a flexible fixing bracket.

Multigrip™ Head Support

The original and innovative **Jenx Multigrip™ Head Support** is available in 3 sizes. Provides adjustments for height, depth and angle.

Flat Shoulder Support

A simple yet effective wide pad for supporting the shoulders when using Standz 2 in a supine position.

Shoulder Support with Shoulder Protractors

Shoulder protractors mounted to a flat shoulder pad, offers angle adjustment and promotes shoulder girdle stability. Available in 2 sizes. Size 2 required to achieve maximum user height.

Flip Away Flexi Laterals with Strap

Flexible lateral supports with incorporated support strap. Wrap around the body to give firm yet comfortable positioning. Can also be used at the pelvis if desired.

Pelvic Support Board

For use in prone positioning only, the **Pelvic Support Board** offers a full contact surface to facilitate the full extension of the pelvis and prevent pelvic rotation, pelvic obliquity and unwanted hip flexion.

Pelvic Support Board Upper Back Pad

Used in conjunction with the **Pelvic Support Board**, the back pad offers support for the child's upper back. A head support can also be mounted to the back pad to help keep a neutral head position for those children who hyper extend their neck and head when standing in prone.

Waistcoat Harness

Gives full trunk and shoulder girdle stability when using the Standz 2 in the supine position. Available in 2 sizes.

Flip Away Laterals with Strap

Firm lateral support pads offer stability to the trunk, pelvis or both together, and the incorporated support strap can be used to facilitate extension or rotation.

Standard Knee Support

Individual knee supports offering the ability to accommodate knee flexion when used in supine (requires **Knee Straps** when used in supine). Width adjustable to correctly gutter the knee in position.

Multi-Axis Knee Supports

Use for supine standing only. For use where there is the need to accommodate fixed knee flexion. Available in 2 sizes.

In addition to the base you will need to add the following accessories to ensure a minimum safe configuration.

Prone – sandals, knee support, pelvic support & trunk support.

Supine – sandals, knee support, knee support straps, pelvic support, trunk support & head support.

Knee Blocks with Strap

Innovative and flexible PU **Knee Blocks**; adjustable for height, width, angle, and depth. Available in 2 sizes, making them suitable for smaller children and come complete with padded, de-rotational knee straps.



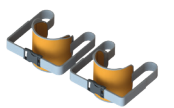
Knee Block Mounting Bracket

Allows for the mounting of the PU **Knee Blocks** where these are the preferred method of knee control.



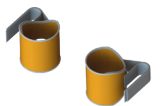
Standard Knee Strap

Intended for use in conjunction with the **Standard Knee Supports**, the **Standard Knee Strap** simply holds the knee in the desired position and prevents knee flexion from occurring. Available in 2 sizes.



Rotation Control Knee Straps

Intended for use in conjunction with the **Standard Knee Supports** the **Rotation Control Knee Straps** allow for a cuffing of the child's leg and allow for control of internal or external knee rotation. Available in 2 sizes.



Arched Foam Pad

A simple foam pad that is shaped to fit behind the knee to ensure a comfortable standing position when accommodating knee flexion.



Sandals

Sandals ensure solid foot placement to give the foundation for effective leg positioning and safe standing. Available in 3 sizes and also available with **Ankle Snugs**.



Tray Mounting Bracket

Required to mount the Tray – simply slots onto the Standz 2 base and is adjusted using simple, comfortable wing knobs. Allows for the tray to be quickly changed from supine to prone or vice-versa, with no need to remove the mounting bracket.



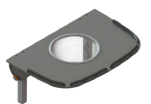
Multi-position Tray with Bowl

Cleverly designed to be used in both prone and supine, the tray is angle adjustable to ensure the correct position in either application. The solid tray overlay can be removed to allow the included bowl to be used for encouraging tactile play and hands to mid-line function. Also available without a bowl.



Prone Only Tray with Bowl

Shorter support arms allow for unobstructed movement of legs into the abducted position. The solid tray overlay can be removed to allow the included bowl to be used for encouraging tactile play and hands to mid-line function. Also available without a bowl.



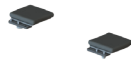
Tray Extension Wings

Strongly recommended for use in supine and just as effective when used in prone, these wings attach to the rear of the tray to offer a support surface for the child's elbows and prevents arms from slipping off the tray.



Tray Padded Wings

Offering the same support as tray extension wings, with the addition of being padded for comfort and protection for the elbow.



Full Tray Padding

Pads the entire tray surface to give a soft surface for the child to lean against and prevents any discomfort caused by sudden uncontrolled arm and hand movement.



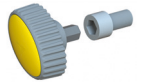
Tray Elbow Blocks

Aid in preventing retraction of the child's arms and promote a functional arm and hand position – used in conjunction with **Tray Extension Wings**.



Anti-tamper Conversion Kit

Allows for all wing knob adjustments to be converted to a tool fixing – ideal for environments where other children may tamper with the original wing knobs.



Standz 2 by Jenx Technical Specifications

IMPORTANT INFORMATION:

Please be aware, some minimum and maximum measurements are achieved by the use of additional accessory components.

	Measurement	Units	Prone	Supine
Age Range	approx.	yrs	5 - 14	5 - 14
User Weight	max	kg	70	70
User Height	min - max	mm	990 - 1600	990 - 1600
Angle Range (support surface angle range)	min - max	degrees	0° - 90°	0° - 90°
Shoulder Width	min - max	mm	-	200 - 290
Chest Width	min - max	mm	220 - 360	220 - 360
Hip Width	min - max	mm	250 - 370	250 - 370
Kneeblock Width (centre to centre)	neutral standing	mm	220	220
Leg Abduction	min - max	degrees	0° - 30°	0° - 30°
Footplate Angle	dorsiflexion - plantar flexion	degrees	15° - 15°	15° - 15°
Height of Stander (floor to top of upper pad)	in upright	mm	1130	1230
Height of Stander (floor to support board)	at horizontal	mm	900	900
Height from footplate to top of chestplate	min - max	mm	820 - 1160	820 - 1160
Base Footprint	width x length	mm	760 x 1070	760 x 1070

Find Your Distributor

To locate one of our carefully selected distributors near you, visit:
jenx.com/where-to-buy



@JenxLtd



@JenxLtd



@JenxLtd



Jenx Limited, Wardsend Road, Sheffield S6 1RQ, United Kingdom
 tel: +44 (0) 114 285 3376
 email: export@jenx.com
www.jenx.com

