



Scan for more info.



Article Daintree 2.1

Range Highway

Reference 1053.90

EU Regulation EN ISO 20345:2011 CE

Protection Class S3 SRC HRO

Sizes 39-48 (UK: 6 -13)



Description

Daintree 2.1 is a S3 SRC ESD protection class safety boot recognized for its comfort and durability. The details make the boot, from the abrasion resistant direct injected PU + Rubber sole to the flexible and light perforation-resistant Steel midsole, a safety boot has never felt so powerful.

Foot health and comfort are ensured by the Black Nubuck Leather upper, a Black Breathable Cambrelle Textile, and a steel toe cap (impact-resistant to 200 J).

Safety boot available from size 39 to 48, Daintree 2.1 is the ideal boot for logistics, transport, electronic services, and outdoor activities.

Characteristics

Sole

DOUBLE DENSITY PU
+ RUBBER

Upper material

BLACK NUBUCK
LEATHER

Width

11
(Normal last)

Protection Toe Cap

STEEL (impact-
resistant to 200 J)

Linning material

BLACK BREATHABLE
CAMRBELLE TEXTILE

Protection Midsole

STEEL (perforation-
resistant to 1100 N)

Insole

LAVORO AIRPUMP



Steel Toe Cap



Water Repellent
Upper



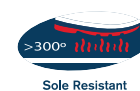
Steel Midsole



Chainsaw
Protection



Anti Slip Sole



Sole Resistant
to 300°



Fuel/Oil
Resistant Sole



Sol Pinheiro 4810-718 Guimarães - Portugal | Tel: +351 253 776 666 | Email: info@lavoroeurope.com | www.lavoroeurope.com

Language EN

Date July, 2022