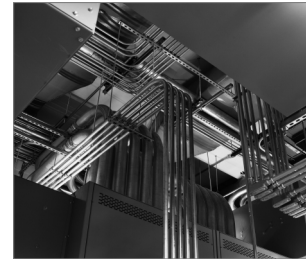


## R-DCA-ST-II Wedge Anchor Setting Tools - II Generation

Manual setting tool



### Approvals and Reports

- ETA-13/0584



### Product information

#### Features and benefits

- Unique tool for installing R-DCA and R-DCL anchors
- Manual installation of wedge anchors with rubber grip and hand protection
- The ergonomic rubber grip ensures a comfortable installation

#### Applications

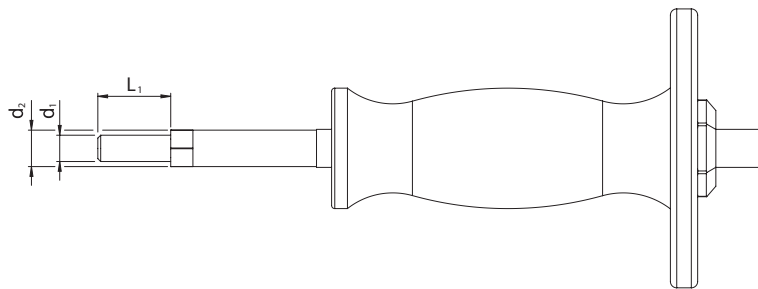
- Installation of wedge anchors

### Installation guide



1. Use the manual setting tool with hammer to drive the internal wedge into the anchor

**Product information**



| Size | Product Code      | Diameter |       | Length |
|------|-------------------|----------|-------|--------|
|      |                   | $d_1$    | $d_2$ | $L_1$  |
|      |                   | [mm]     | [mm]  | [mm]   |
| M6   | R-DCA-ST-II-06    | 5        | 7.5   | 14.8   |
| M8   | R-DCA-ST-II-08-25 | 6.6      | 9.5   | 17     |
|      | R-DCA-ST-II-08    | 6.6      | 9.5   | 18     |
| M10  | R-DCA-ST-II-10    | 8.3      | 11.5  | 23     |
|      | R-DCA-ST-II-10-25 | 8.3      | 11.5  | 17     |
|      | R-DCA-ST-II-10-30 | 8.3      | 11.5  | 18     |
| M12  | R-DCA-ST-II-12-25 | 10.2     | 14.5  | 17     |
|      | R-DCA-ST-II-12    | 10.2     | 14.5  | 28     |
| M16  | R-DCA-ST-II-16    | 13.5     | 19.5  | 33     |

**Product commercial data**

| Product Code                    | Length [mm] | Quantity [pcs] |       |        | Weight [kg] |       |        | Bar Codes     |
|---------------------------------|-------------|----------------|-------|--------|-------------|-------|--------|---------------|
|                                 |             | Box            | Outer | Pallet | Box         | Outer | Pallet |               |
| R-DCA-ST-II-06 <sup>1)</sup>    | 14.8        | 1              | 10    | 560    | 2.8         | 27.8  | 1586.2 | 5906675423449 |
| R-DCA-ST-II-08-25 <sup>1)</sup> | 17          | 1              | 10    | 560    | 0.31        | 3.1   | 202.8  | 5906675430775 |
| R-DCA-ST-II-08 <sup>1)</sup>    | 18          | 1              | 10    | 240    | 3.2         | 32.2  | 801.6  | 5906675423456 |
| R-DCA-ST-II-10 <sup>1)</sup>    | 23          | 1              | 10    | 240    | 3.3         | 33.3  | 829.9  | 5906675423463 |
| R-DCA-ST-II-10-25 <sup>1)</sup> | 17          | 1              | 10    | 560    | 0.36        | 3.6   | 230.7  | 5906675430782 |
| R-DCA-ST-II-10-30 <sup>1)</sup> | 18          | 1              | 10    | 560    | 0.33        | 3.3   | 213.1  | 5906675455341 |
| R-DCA-ST-II-12-25 <sup>1)</sup> | 17          | 1              | 10    | 560    | 0.45        | 4.5   | 281.7  | 5906675432090 |
| R-DCA-ST-II-12 <sup>1)</sup>    | 28          | 1              | 10    | 560    | 4.5         | 45.1  | 2556.7 | 5906675423470 |
| R-DCA-ST-II-16 <sup>1)</sup>    | 33          | 1              | 10    | 240    | 0.62        | 6.2   | 177.6  | 5906675423487 |

1) ETA-13/0584