

## DRA-01 Nylon self-drill fixing for drywall

Self-drilling light-duty nylon fixing for use in plasterboard sheets and gypsum fibreboards.



### Product information

#### Features and benefits

- Flange prevents accidental push through in plasterboard.
- Can be used in single and double thickness plasterboard.
- Short length ideally suited for dry lined walls.
- Very durable nylon material with fibre glass and special drilling point guarantees fast installation
- Installation with a standard screwdriver means that no special tools are necessary.
- Recommended screw diameter: 3.5 - 4.2 mm
- Must only be used with screw provided.

#### Applications

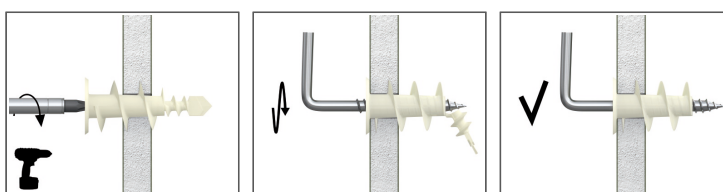
- Ideal for installation of sockets, light switches and other electrical fittings
- Shelves and bathroom accessories on standard plasterboard.
- Installation of ceiling fixtures, such as light fittings
- Fixing light shelving, brackets and hooks
- Pictures
- Wood battens

#### Base materials

##### Suitable for use in

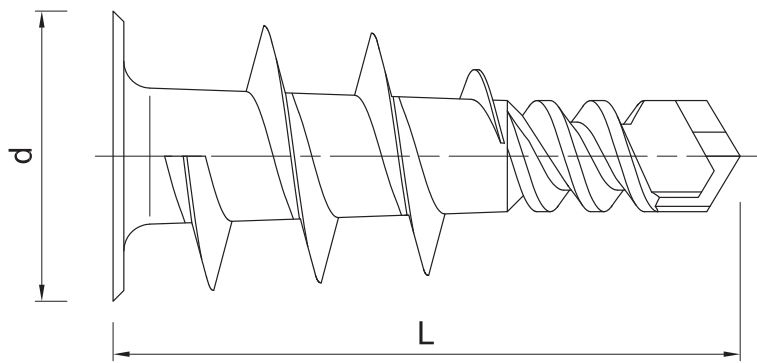
- Plasterboard
- Gypsum Fibreboards

### Installation guide



1. Using a PZ2 screwdriver, push fixing point firmly into the board until thread engages.
2. Maintaining a firm pressure, screw in fixing until flush with the base material.
3. Place fixture in position, insert screw and tighten until secure.

## Product information



Product Code	Plug		Screw		Fixture	
	Diameter	Length	Diameter	Length	Max. thickness	Hole diameter
	d	l	D	L	t <sub>fix</sub>	d <sub>i</sub>
[mm]						
DRA-01	14	32	-	-	-	-
DRA-01PLUS	14	22	3.9	32	12	5
R-DRA-01	14	32	-	-	-	-

## Installation data

Size	DRA-01(PLUS)		
Min. substrate thickness	h <sub>min</sub>	[mm]	9.5
Min. installation depth	h <sub>nom</sub>	[mm]	9.5
Min. spacing	s <sub>min</sub>	[mm]	22
Min. edge distance	c <sub>min</sub>	[mm]	22
Fixing diameter	d	[mm]	14

## Basic performance data

Substrate	Plasterboard min. 9.5 mm	Plasterboard min. 12.5 mm
CHARACTERISTIC LOAD F <sub>Rk</sub>		
DRA-01 (PLUS)	[kN] 0.23	0.25
DESIGN LOAD F <sub>Rd</sub>		
DRA-01 (PLUS)	[kN] 0.09	0.10
RECOMMENDED LOAD F <sub>rec</sub>		
DRA-01 (PLUS)	[kN] 0.06	0.07

## Product commercial data

Product Code	Plug	Screw	Quantity [pcs]			Weight [kg]			Bar Codes
	Diameter [mm]	Length [mm]	Box	Outer	Pallet	Box	Outer	Pallet	
DRA-01	14	-	100	1600	38400	0.21	3.3	108.7	5906675193120
DRA-01PLUS	14	32	100	1600	38400	0.45	7.2	202.4	5906675194127
R-DRA-01	14	-	100	1600	38400	0.21	3.4	110.6	5906675161044