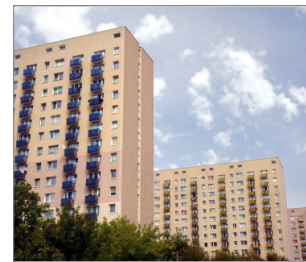


## R-STUDS Metric Threaded Rods - Steel Class A4

A4 stainless steel threaded rod for outdoor and damp conditions



### Product information

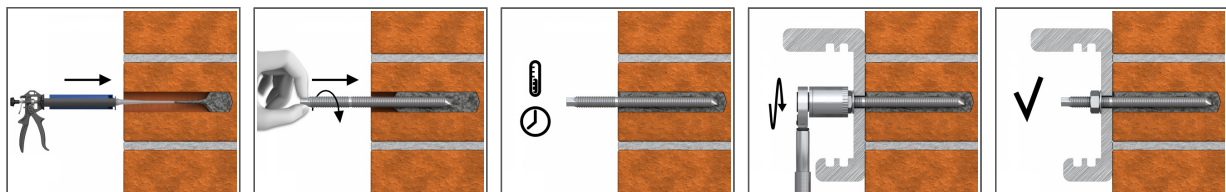
#### Features and benefits

- High-performance bonded anchors offer high load-bearing capacities
- A4 stainless steel offers improved load-bearing capacities (relative to standard carbon steel)
- Can be post-installed through fixture in some cases. (Consult technical advisory service)
- Hexagonal bit for the wrench with appropriate tightening torque

#### Applications

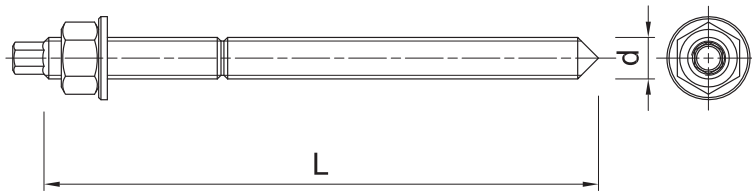
- Satellite dishes
- Balustrading & handrails
- Barriers
- Safety barriers
- Starter bars
- Gates, wickets, fences
- Stadium seating
- Fixing electrical boxes, sanitary ware, cable trunking, etc.
- Road Signs

### Installation guide



1. Drill hole to the required diameter and depth for stud size being used.
2. Clean the hole thoroughly with hand pump and hole brush
3. If required, insert the mesh sleeve into position
4. Fill hole with the required resin to the recommended fill level. (Follow the relevant instructions for the resin product)
5. Insert the threaded stud slowly and with a slight twisting motion, until the required embedment depth is reached
6. Leave undisturbed until curing time of resin has elapsed
7. Attach fixture and tighten the nut to the required installation torque

**Product information**



Size	Product Code	Anchor		Fixture		
		Diameter	Length	Max. thickness $t_{fix}$ for:		Hole diameter
		d	L	$h_{nom, 6d}$	$h_{nom, 12d}$	$d_f$
		[mm]	[mm]	[mm]	[mm]	[mm]
M8	R-STUDS-08110-A4	8	110	52	4	9
	R-STUDS-08160-A4	8	160	102	54	9
M10	R-STUDS-10130-A4	10	130	58	-	12
M12	R-STUDS-12160-A4	12	160	73	1	14
	R-STUDS-12190-A4	12	190	103	31	14
	R-STUDS-12300-A4	12	300	213	141	14
M16	R-STUDS-16190-A4	16	190	75	-	18
M20	R-STUDS-20260-A4	20	260	117	-	22
M24	R-STUDS-24300-A4	24	300	128	-	26

**Product commercial data**

Size	Product Code	Anchor		Quantity [pcs]			Weight [kg]			Bar Codes
		Diameter [mm]	Length [mm]	Box	Outer	Pallet	Box	Outer	Pallet	
M8	R-STUDS-08110-A4	8	110	10	10	4200	0.43	0.43	210.2	5010445001642
	R-STUDS-08160-A4	8	160	10	10		6.0	6.0		5906675324920
M10	R-STUDS-10130-A4	10	130	10	10	900	0.79	0.79	101.5	5906675234823
M12	R-STUDS-12160-A4	12	160	10	10	5760	1.37	1.37	820.8	5906675234830
	R-STUDS-12190-A4	12	190	10	10		1.80	1.80		5906675324951
	R-STUDS-12300-A4	12	300	10	10		2.5	2.5		5906675324975
M16	R-STUDS-16190-A4	16	190	10	10	4200	2.9	2.9	1243.8	5906675234847
M20	R-STUDS-20260-A4	20	260	5	5	1584	3.0	3.0	977.5	5906675234854
M24	R-STUDS-24300-A4	24	300	2	2	260	2.1	2.1	300.1	5906675176406