

CAT006 EN

SOLAR LIGHT TUBE

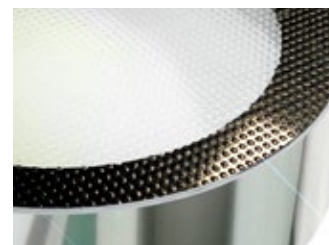
Heavy Floor Models

Passable / trasitable flat domes

The Heavy Floor Models are ecological systems, where natural light is captured and directed through internally coated tube by highly reflective material, which minimizes the dispersion of the rays and allows a supply of light at considerable distances, without heat or cold transfer. Made with robust materials, are resistant to the most severe weather conditions.

Studies indicate an average of about 80% of working hours indoors can be performed with natural light, thus contributing directly to reducing energy consumption and consequently to improve the energy efficiency of buildings.

The Heavy Floor models allow a perfect installation of the Chatron Solar Tube on floors, getting the diffuser built-in without any kind of overhang.



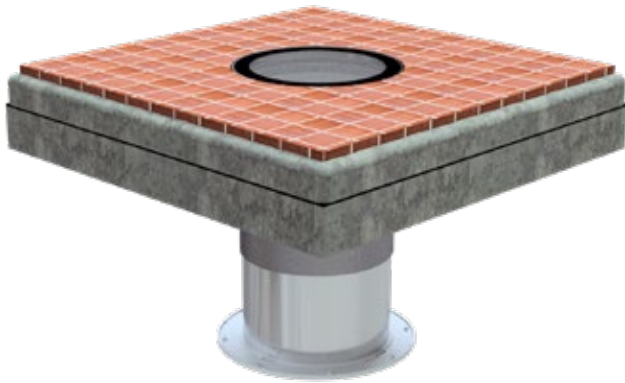
Heavy Floor model for TS with non-slip floor

Chatron, Lda:

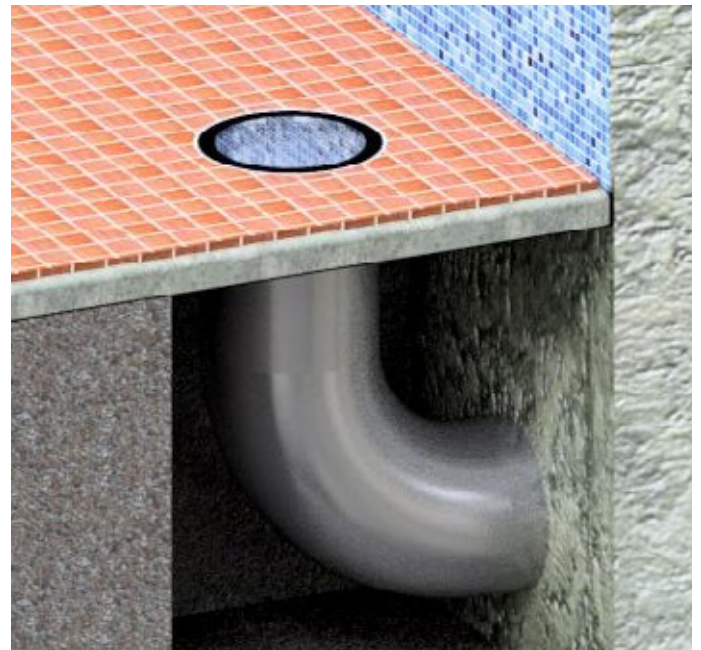
Travessa da Zona Industrial - 1,
nº 95 3730-601 Vale de Cambra,
PORTUGAL.

Tel. (+351) 256 472 888
Email: comercial@chatron.pt
Url: www.chatron.pt

Distributor:

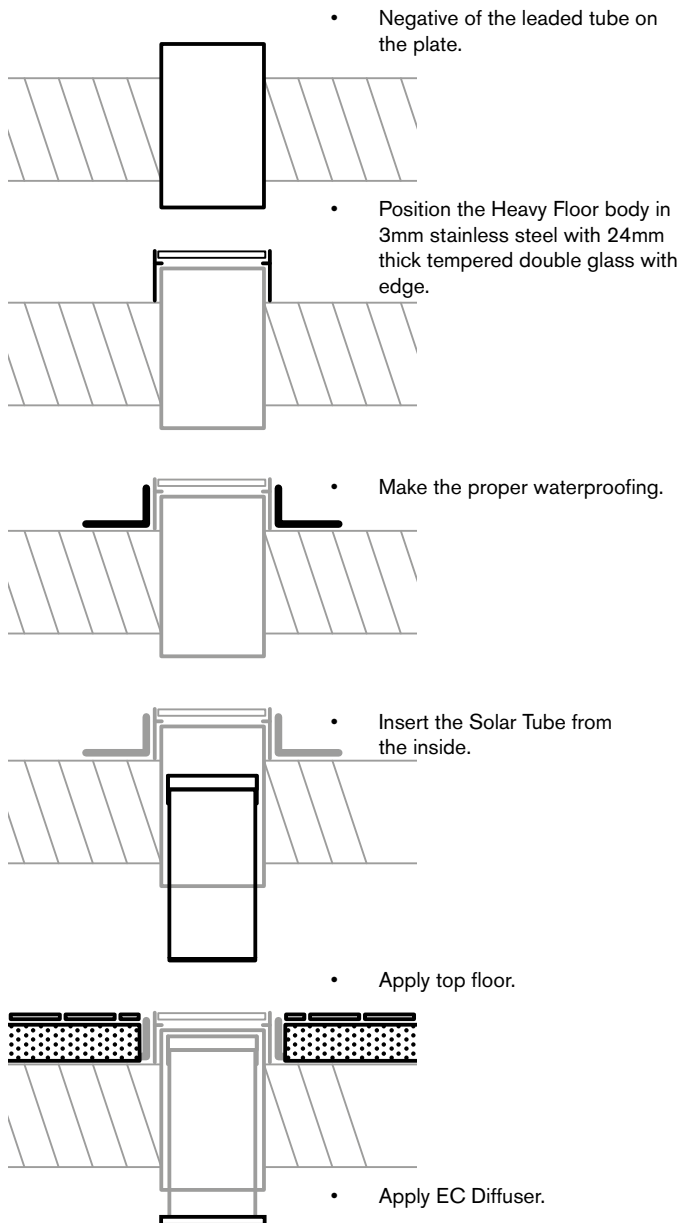


Heavy Floor Installation - Compact View



Heavy Floor Installation - Curved version

Vertical Installation



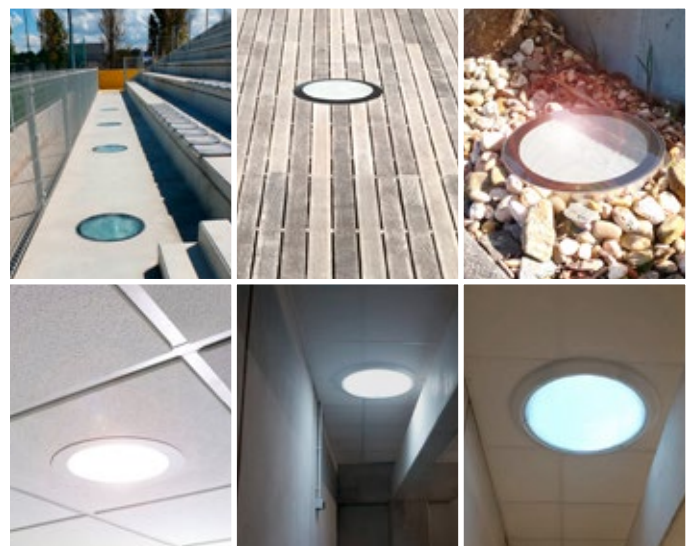
Available Models

	TS-HF-350	TS-HF-530	TS-HF-750
Outside diameter	416 mm	595 mm	815 mm

TS Heavy Floor KIT Components

Heavy Floor's Body	Solar tube with flat dome	Heavy Floor negative	Sunlight diffuser

Various Heavy Floor applications



*Does not dispense with consulting the technical installation manual