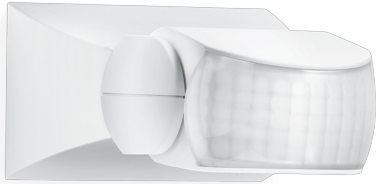


IS 1

white
EAN 4007841 600310



infrared sensor
120°



max. 10 m

500w

500 W max.



IP54



60° horizontal,
180° vertical



2 - 2000 lux



8 sec - 35 min



Ideal 2 m



energy saving



3 JAHRE
HERSTELLER
GARANTIE
steinel.de/garantie
manufacturer's
warranty
steinel.de/garantie

Function description

Targeted detection and attractive price. Infrared motion detector IS 1, for indoors and out, ideal for targeted coverage of small areas, 120° angle of coverage, reach up to 10 m, selectable time and twilight threshold, sensor turns through 30° and tilts through 180° for exact adjustment of the detection zone.

Technical specifications

Type	Motion detectors
Dimensions (L x W x H)	50 x 80 x 120 mm
Mains power supply	230 – 240 V / 50 Hz
Sensor Technology	passive infrared
Application, place	Indoors, Outdoors
Application, place, room	outdoors, front door, all round the building, terrace / balcony, courtyard & driveway
Installation site	wall, ceiling
Installation	Surface wiring
Switching zones	260 switching zones
Electronic scalability	No
Mechanical scalability	No
Mounting height	1,80 – 3,00 m
Optimum mounting height	2 m
Detection angle	120 °
Sneak-by guard	No
Capability of masking out individual segments	Yes
Reach, radial	r = 3 m (9 m ²)
Reach, tangential	r = 10 m (105 m ²)

Twilight setting TEACH	No
Twilight setting	2 – 2000 lx
Time setting	8 s – 35 Min.
Switching output 1, resistive	500 W
Switching output 1, number of LEDs / fluorescent lamps	4 pcs.
Constant-lighting control	No
Basic light level function	No
Settings via	Potentiometers
With remote control	No
Interconnection	Yes
IP-rating	IP54
Material	Plastic
Ambient temperature	-20 – 50 °C
Colour	white
Colour, RAL	9001
Manufacturer's Warranty	3 years
Version	white
PU1, EAN	4007841600310

Motion detectors

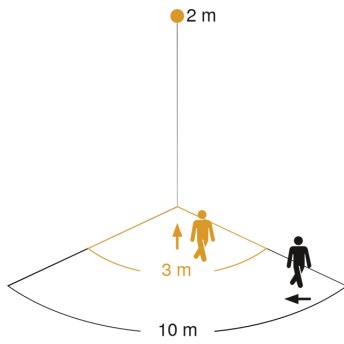
IS 1

white

EAN 4007841 600310

STEINEL[®]
Intelligent technology

Detection Zone



Mögliche Montagehöhe: 1,80 m – 3,00 m

Orange: radial

Schwarz: tangential

Dimension Drawing

