



CoreLine Wall-mounted

WL121V LED5S/840 PSU WH

LED Module, system flux 500 lm - 840 - Fonte de alimentação - WH

Seja para um novo edifício ou reforma de um espaço existente, os clientes querem soluções de iluminação que proporcionem qualidade de energia e substancial economia na manutenção. A nova gama de produtos LED CoreLine pode ser usada para substituir luminárias tradicionais montadas na parede que incorporam lâmpadas fluorescentes compactas. O processo de seleção, instalação e manutenção é muito simples.

Dados do produto

| General Information | | | |
|-------------------------------|---|---------------------------|---|
| Number of light sources | 1 [1 pç] | Glow-wire test | 850/30 [Temperature 850 °C, duration 30 s] |
| Lamp family code | LED5S [LED Module, system flux 500 lm] | Flammability mark | F [F] |
| Beam angle of light source | 120 ° | CE mark | CE |
| Light source color | 840 | ENEC mark | Não |
| Light source replaceable | Não | Remarks | *-Per Lighting Europe guidance paper "Evaluating performance of LED based luminaires - January 2018": statistically there is no relevant difference in lumen maintenance between B50 and for example B10. Therefore the median useful life (B50) value also represents the B10 value. |
| Number of gear units | 1 | Fluxo luminoso constante | No |
| Driver/power unit/transformer | PSU [Fonte de alimentação] | Number of products on MCB | 30 |
| Driver included | Sim | RoHS mark | RoHS mark |
| Optic type | D | | |
| Luminaire light beam spread | 180° | | |
| Emergency lighting | Não [-] | | |
| Connection | PIP [Conector Push-in e alívio de pressão] | | |
| Cable | Não | | |
| Protection class IEC | CLI (I) | | |

CoreLine Wall-mounted

Operating and Electrical

| | |
|--------------------|------------|
| Input Voltage | 220-240 V |
| Input Frequency | 50 a 60 Hz |
| Inrush current | 4 A |
| Inrush time | 0,37 ms |
| Power Factor (Min) | 0.9 |

Controls and Dimming

| | |
|----------|-----|
| Dimmable | Não |
|----------|-----|

Mechanical and Housing

| | |
|-----------------------------------|---------------------|
| Housing Material | Composite materials |
| Optic material | PC |
| Optical cover/lens material | PC |
| Fixation material | Polyamide |
| Acabamento da lente/difusor ótico | Opal |
| Comprimento total | 298 mm |
| Largura total | 175,8 mm |
| Altura total | 85 mm |
| Altura | 85 mm |
| Cor | WH |

Approval and Application

| | |
|------------------------------|--------------|
| Ingress protection code | IP65 [IP65] |
| Mech. impact protection code | IK10 [IK10] |

Initial Performance (IEC Compliant)

| | |
|-----------------------|--------|
| Initial luminous flux | 500 lm |
|-----------------------|--------|

| | |
|-----------------------------------|---------------------|
| Luminous flux tolerance | +/-10% |
| Initial LED luminaire efficacy | 63 lm/W |
| Init. Corr. Temperatura de cor | 4000 K |
| Init. Índice de reprodução de cor | >80 |
| Initial chromaticy | (0.37, 0.37) SDCM<3 |
| Initial input power | 8 W |
| Power consumption tolerance | +/-10% |

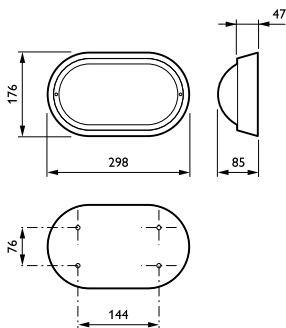
Application Conditions

| | |
|------------------------------------|--------------|
| Ambient temperature range | -20 a +35 °C |
| Performance ambient temperature Tq | 25 °C |
| Suitable for random switching | No |

Product Data

| | |
|---------------------------------|-------------------------|
| Full product code | 871869606637999 |
| Order product name | WL121V LED5S/840 PSU WH |
| EAN/UPC - Product | 8718696066379 |
| Order code | 910503910014 |
| Local Code | 910503910014 |
| Numerator - Quantity Per Pack | 1 |
| Numerator - Packs per outer box | 12 |
| Material Nr. (12NC) | 910503910014 |
| Net Weight (Piece) | 0,750 kg |

Desenho dimensional



CoreLine Wall-mounted WL120V/WL121V

CoreLine Wall-mounted

