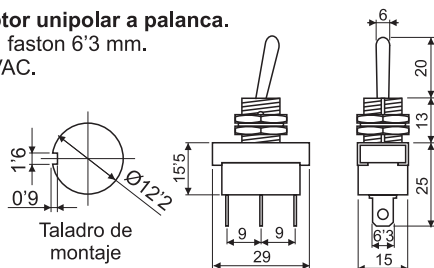


INTERRUPTORES

11.470/...



Interruptor unipolar a palanca.
Terminal faston 6'3 mm.
6A/250VAC.

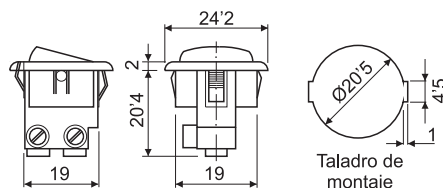


- I 11.470/TP Interruptor unipolar tres posiciones ON-OFF-ON.
- C 11.470 Conmutador unipolar ON-ON.

11.475/...



Interruptor unipolar empotrable basculante.
Contacto protegido. Conexión a tornillo M3.
T: 120°C. 6A/250V.

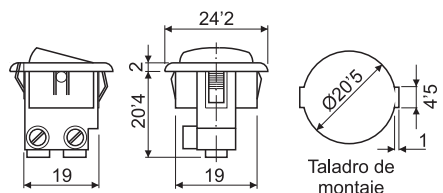


- I 11.475/N Interruptor unipolar ON-OFF. Color negro.
- I 11.475/B Interruptor unipolar ON-OFF. Color blanco.

11.477/...



Interruptor unipolar empotrable basculante.
Contacto protegido. Conexión a tornillo M3.
T: 85°C. 6A/250V.



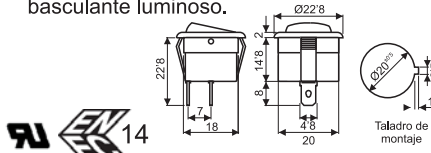
- I 11.477/N Interruptor unipolar ON-OFF. Color negro.
- I 11.477/B Interruptor unipolar ON-OFF. Color blanco.

11.478/...



Interruptor unipolar empotrable basculante. T: 85°C. 6A/250V.

I11.478 Interruptor unipolar basculante. Negro
I11.478/L Interruptor unipolar basculante luminoso.



11.479/...



Interruptor unipolar empotrable a pulsador. T: 85°C. 10(4)A/250 V.

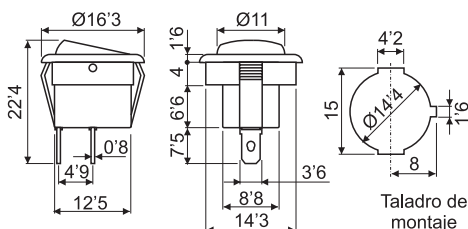
I11.479/N/R Interruptor unipolar a pulsador. Color negro-rojo.
I11.479/L/N/R Interruptor unipolar luminoso a pulsador. Color negro-rojo.



11.482/...



Interruptor unipolar empotrable basculante MINIATURA.
T: 85°C. 3A/250 V.

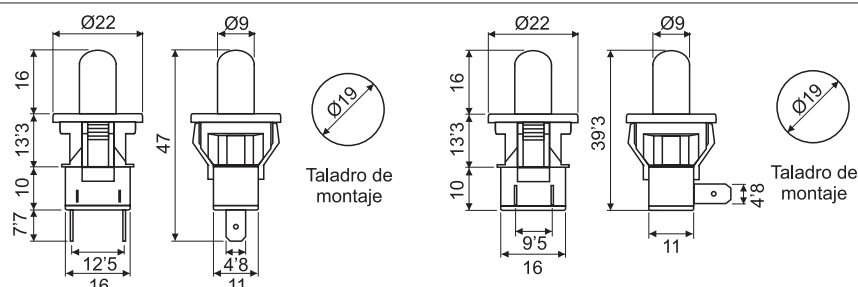


- I 11.482 Interruptor unipolar ON-OFF. Color negro.
- I 11.482/L Interruptor unipolar ON-OFF. Luminoso.

11.492/...



Pulsador empotrable ON-OFF.
T: 85°C. 2'5A/250VAC.



- I 11.492 Interruptor salida axial.
- I 11.492/90 Interruptor salida radial (90°).