



Réguas de graduadas em aço e inox DIN 866A – DIN 866B

Réguas de graduadas em aço lisa e biselada

Präzisionsmaßstäbe aus Stahl

Precision rules, steel



- ▶ DIN 866
- ▶ 1/1mm Teilung
- ▶ allseitig geschliffen
- ▶ Lieferung einzeln verpackt

- ▶ DIN 866
- ▶ 1/1mm graduation
- ▶ All sides ground
- ▶ Delivered in individual packages

1698 1..:
DIN 866/A Normalstahl
beiderseitig mit Schutzenden

1698 1..:
DIN 866/A Normal steel
with protective ends on both sides

1698 2..:
DIN 866/A rostfreier Stahl
beiderseitig mit Schutzenden

1698 2..:
DIN 866/A Stainless steel
with protective ends on both sides

1699 1..:
DIN 866/B Normalstahl
mit 0-Strich beginnend

1699 1..:
DIN 866/B Normal steel
starts with 0 line

1699 2..:
DIN 866/B rostfreier Stahl
mit 0-Strich beginnend

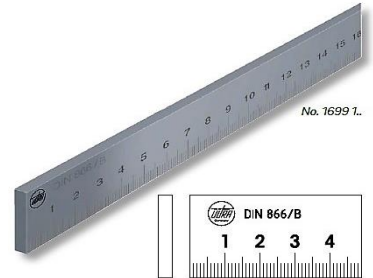
1699 2..:
DIN 866/B Stainless steel
starts with 0 line

1688 1..:
Holzetui

1688 1..:
Wooden box

! Größere Längen auf Anfrage.

! Larger lengths on request.



mm	mm	kg	GG A N°	GG A N°	mm	mm	kg	GG B N°	GG B N°	N°
500	30 x 6	0,8	1698 101	1698 201	500	25 x 5	0,5	1699 101	1699 201	1688 101
1000	40 x 8	2,5	1698 102	1698 202	1000	30 x 6	1,5	1699 102	1699 202	1688 103
1500	40 x 8	3,7	1698 103	1698 203	1500	30 x 6	2,1	1699 103	1699 203	1688 104
2000	50 x 10	7,5	1698 104	1698 204	2000	40 x 8	4,8	1699 104	1699 204	1688 105
3000	50 x 10	12,0	1698 105	1698 205	3000	40 x 8	7,5	1699 105	1699 205	1688 107

Lineale mit Facette

Straightedges with bevel edge



- ▶ Werksnorm
- ▶ Normalstahl verzinkt
- ▶ Lieferung einzeln verpackt

- ▶ Works standard
- ▶ Galvanised normal steel
- ▶ Delivered in individual packages

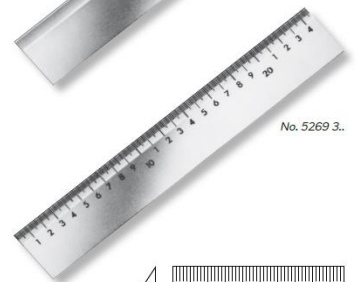
5269 2..:
ohne Teilung

5269 2..:
Without graduation

5269 3..:
mit 1/1mm-Teilung

5269 3..:
With 1/1mm graduation

mm	mm	kg	N°	N°
300	40x5	0,5	5269 201	5269 301
400	40x5	0,65	5269 202	5269 302
500	40x5	0,8	5269 203	5269 303
800	40x5	1,2	5269 204	5269 304
1000	40x5	1,5	5269 205	5269 305
1500	40x5	2,3	5269 206	5269 306
2000	40x5	3,1	5269 207	5269 307



Maßstäbe mit Facette aus Aluminium

Rules with bevel edge, aluminium



- ▶ Werksnorm
- ▶ Aluminium eloxiert
- ▶ Tusche-Kante
- ▶ blendfreie 1/1mm-Teilung nach DIN 866/B
- ▶ Lieferung einzeln verpackt

- ▶ Works standard
- ▶ Anodised aluminium
- ▶ Non-smearing edge
- ▶ Non-glare 1/1mm graduation acc. DIN 866/B
- ▶ Delivered in individual packages

mm	mm	kg	N°
300	50x5	0,19	5279 101
600	50x5	0,35	5279 102
1000	50x5	0,58	5279 103



Régua de montagem em aço especial DIN 874



	Length mm	Cross section mm	Ref. No. DIN 874
Accuracy grade 0			
Special steel, rectangular cross section:			
▪	500	50 x 10	0464 101
▪	750	50 x 10	0464 102
▪	1000	60 x 12	0464 103
▪	1500	70 x 15	0464 104
Special steel, I shaped cross section, 2 hand slots:			
▪	2000	80 x 15	0464 105
▪	2500	100 x 16	0464 106
▪	3000	120 x 18	0464 107
▪	4000	140 x 20	0464 108
▪	5000	140 x 20	0464 109
Accuracy grade 1			
Special steel, rectangular cross section:			
▪	500	40 x 8	0465 101
▪	750	50 x 10	0465 102
▪	1000	50 x 10	0465 103
▪	1500	60 x 12	0465 104
Special steel, I shaped cross section, 2 hand slots:			
▪	2000	70 x 15	0465 105
▪	2500	80 x 15	0465 106
▪	3000	100 x 16	0465 107
▪	4000	120 x 18	0465 108
▪	5000	140 x 20	0465 109
Accuracy grade 2			
Special steel, rectangular cross section:			
▪	500	30 x 6	0466 101
▪	750	40 x 8	0466 102
▪	1000	40 x 8	0466 103
▪	1500	50 x 10	0466 104
▪	2000	60 x 12	0466 105
▪	2500	70 x 15	0466 106
▪	3000	80 x 15	0466 107
Special steel, I shaped cross section, 2 hand slots:			
▪	4000	100 x 16	0466 108
▪	5000	120 x 18	0466 109

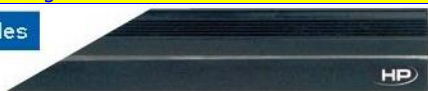
Régua de montagem em aço inox DIN 874



	Length mm	Cross section mm	Ref. No. DIN 874
Accuracy grade 0			
Stainless steel, rectangular cross section:			
▪	500	50 x 10	0464 201
▪	750	50 x 10	0464 202
▪	1000	60 x 12	0464 203
▪	1500	70 x 15	0464 204
Stainless steel, I shaped cross section, 2 hand slots:			
▪	2000	80 x 15	0464 205
▪	2500	100 x 16	0464 206
▪	3000	120 x 18	0464 207
▪	4000	140 x 20	0464 208
▪	5000	140 x 20	0464 209
Accuracy grade 1			
Stainless steel, rectangular cross section:			
▪	500	40 x 8	0465 201
▪	750	50 x 10	0465 202
▪	1000	50 x 10	0465 203
▪	1500	60 x 12	0465 204
Stainless steel, I shaped cross section, 2 hand slots:			
▪	2000	70 x 15	0465 205
▪	2500	80 x 15	0465 206
▪	3000	100 x 16	0465 207
▪	4000	120 x 18	0465 208
▪	5000	140 x 20	0465 209
Accuracy grade 2			
Stainless steel, rectangular cross section:			
▪	500	30 x 6	0466 201
▪	750	40 x 8	0466 202
▪	1000	40 x 8	0466 203
▪	1500	50 x 10	0466 204
▪	2000	60 x 12	0466 205
▪	2500	70 x 15	0466 206
▪	3000	80 x 15	0466 207
Stainless steel, I shaped cross section, 2 hand slots:			
▪	4000	100 x 16	0466 208
▪	5000	120 x 18	0466 209

Régua de Cabelo DIN 874

Knife edge rules



	Length mm	Cross section mm	Ref. No.
Special steel, hardened and ground:			
▪	75	22 x 6	0512 101
▪	100	22 x 6	0512 102
▪	125	22 x 6	0512 103
▪	150	22 x 6	0512 104
▪	200	22 x 6	0512 105
▪	300	30 x 7	0512 106
▪	400	40 x 7	0512 107
▪	500	40 x 7	0512 108
Stainless steel, hardened and ground:			
▪	75	22 x 6	0512 201
▪	100	22 x 6	0512 202
▪	125	22 x 6	0512 203
▪	150	22 x 6	0512 204
▪	200	22 x 6	0512 205
▪	300	30 x 7	0512 206
▪	400	40 x 7	0512 207
▪	500	40 x 7	0512 208
▪	600	40 x 7	0512 209
▪	750	45 x 10	0512 210
▪	1000	45 x 10	0512 211

Specification

- DIN 874 Sheet 2, accuracy GG 00 from 500 mm: Factory standard
- Thermally insulated
- Pointed tip at one end
- Special steel: glare free and burnished knife edge
- Stainless steel: non glare knife edge

Shipment

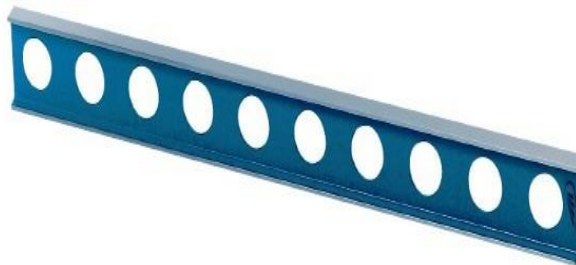
- Imitation leather case

0512 Wooden cases for knife edge rules

	For length mm	Ref. No.
▪	75	0512 601
▪	100	0512 602
▪	125	0512 603
▪	150	0512 604
▪	200	0512 605
▪	300	0512 606
▪	400	0512 607
▪	500	0512 608
▪	600	0512 609
▪	750	0512 610
▪	1000	0512 611

Régua de montagem em aço DIN 874

0467 Mounting straight edges



Specification

- DIN 874 Sheet 1
- Special steel

	Length mm	Cross section mm	Ref. No.
Accuracy grade 0			
▪	1000	160 x 50	0467 011
▪	1500	160 x 50	0467 012
▪	2000	160 x 50	0467 013
▪	2500	160 x 50	0467 014
▪	3000	180 x 60	0467 015
▪	4000	180 x 60	0467 016
▪	5000	200 x 80	0467 017
Accuracy grade 1			
▪	1000	100 x 30	0467 111
▪	1500	100 x 30	0467 112
▪	2000	120 x 40	0467 113
▪	2500	120 x 40	0467 114
▪	3000	140 x 40	0467 115
▪	4000	140 x 40	0467 116
▪	5000	140 x 40	0467 117