



**Drill gauges**

Gauge in the form of a steel plate with bores of increasing diameters for determining drill diameters.

- Increment: 0.1 mm.



836.640



Item No.	Measuring range/mm	Number of bores
836.640	0.1 - 10	100
836.641	3 - 10	71
856.545	15.1 - 17.5	25
856.546	17.6 - 20	25

**Twist drill grinding gauges**

For checking twist drills for the place and the 118° angle of the twist drill point. The maximum drill diameter is 50 mm.



856.441

Universal twist drill grinding gauge, also called Y-gauge. Besides the standard angle of 118°, this gauge also has a 90° angle for counter-sink drills, and some special angles for center drills.



856.443

Item No.	Description
856.441	Twist drill grinding gauge
856.443	Y-gauge

**Measuring wedges**

Measuring wedges for quick measurements and checks of slits, key-ways, distances, etc.

- Measuring range: 0.4 - 26 mm.
- Graduation: 0.05, 0.1 or 0.2 mm.



909.537



909.535



909.536



856.331

Item No.	Measuring range/mm	Graduation mm
909.535	0.4 - 6	0.05
856.331	0.5 - 11	0.1
909.536	1 - 15	0.1
909.537	2 - 26	0.2

**Center gauges**

For checking thread cutting tools for Whitworth thread 55° or metric thread 60°.



856.444



856.445

Item No.	Description
856.444	Whitworth 55°
856.445	Metric 60°

**Thread cutting tool gauges**



856.446

856.446 Universal thread cutting tool gauge for angular thread and flat thread



856.447

856.447 Trapezoidal thread cutting tool gauge for trapezoidal thread DIN 103 (30°, 2-12 mm)

856.449 Combined lathe and thread cutting tool gauge for - cutting tool wedge angle, - trapezoidal thread DIN 103 (30°, 2-12 mm), and - angular thread (40° - 80°)



856.449

856.450 Combined lathe and thread cutting tool gauge like 856.449, with additional angle stop (0-30°) on the back

856.451 Thread cutting tool gauge for - rectangular thread, - trapezoidal thread DIN 103 (30°, 2-12 mm), and - angular thread (55° and 60°)



856.450



856.451

**Flat plug gauges**

- Measuring range: 1 - 60 mm.
- Graduation: 0.1 mm.
- Stainless steel, no-glare chrome finished.
- Graduation on both sides.
- Ground measuring faces.



907.876

Item No.	Measuring range/mm
907.876	1 - 15
909.516	15 - 30
909.517	30 - 45
909.534	45 - 60

**Conical plug gauges**

- Measuring range:  $\phi$  1 - 45 mm.
- Graduation: 0.1 mm.
- Hardened, ground and chrome finished.
- With anodized handle.



906.490



Item No.	Measuring range/mm
909.490	$\phi$ 1 - 6
909.491	$\phi$ 4 - 15
909.492	$\phi$ 15 - 30
909.493	$\phi$ 30 - 45

**Nozzle gauges**

Set of pins in holder serving as a gauge to determine jet nozzle sizes.



856.107

Item No.	Number of pins	Sizes mm
856.107	20	$\phi$ 0.45 - 1.50
856.108	16	$\phi$ 1.50 - 3.00
856.124	16	$\phi$ 3.00 - 4.50
856.125	16	$\phi$ 4.50 - 6.00

**Nozzle gauges with vernier**

Nozzle gauges with a hardened and ground tapered needle.

- Measuring range:  $\phi$ 0 - 5 mm.
- Vernier: 0.01 mm.



856.110

Item No.	Measuring range/mm
856.109	$\phi$ 0 - 3
856.110	$\phi$ 0 - 5

**Angle gauges**

**Angle gauge set**

- Measuring range: 5 - 90° (supplementary angles: 90 - 175°).
- Increment: 5° (18 pieces).
- Multiple angles per angle gauge: - primary angles (1, 2°, 3, 4), - supplementary angles (5, 6), and - 1/2 primary angles (7, 8).
- Delivery in a case.



\* Angle 2: only with the angle gauges from 20°.

Item No.	Description
909.410	Angle gauge set

**Angle gauges**

- Measuring range: 1 - 45°.
- Number of blades: 20.
- Angles: 1° - 2° - 3° - 4° - 5° - 6° - 7° - 8° - 9° - 10° - 12° - 14° - 16° - 18° - 20° - 25° - 30° - 35° - 40° - 45°.



Item No.	Description
908.798	Angle gauges

**Radius gauges**

- Measuring range radius: 1 - 25 mm.
- Increment: 1 - 3 mm: 0.25 mm, 3.5 - 20 mm: 0.5 mm, >20 mm: 1.0 mm.



Item No.	Radius range/mm
907.766	1 - 7
907.767	7.5 - 15
907.768	15.5 - 25

**Shape and radius gauge**

This stainless steel gauge can be used to adopt various complex shapes of tools and workpieces. When the gauge is pressed against the part which has to be checked, it takes on the shape of this part. Because of the graduation (mm) on the case, the shape can be checked easily.

Because the tracers were supported under pressure, they don't move on their own.



Item No.	Measuring range/mm
836.319	150 x 40

## Set of welding seam gauges

- For weld thickness: 3 - 12 mm.
- Up to 7 mm increasing with 0.5 mm, plus 8, 10 and 12 mm.
- Total: 12 pieces.
- Bright steel.



Item No.	Description
856.452	Welding seam gauges

## Welding seam gauge

For measurement of welding seams.

- Graduation: 0.2 mm.
- Stainless steel.
- Delivery in a case.



Item No.	Description
856.438	Welding seam gauge

## Welding seam calipers

For measurement of welding seams.

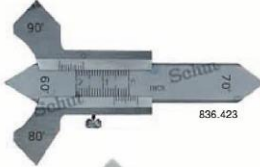
- Measuring range: 0 - 20 mm.
- Analog: vernier 0.1 mm, digital: resolution 0.01 mm.
- Delivery in a case.

### Analog

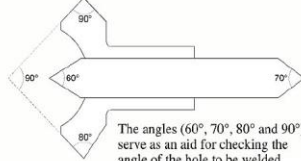
- Stainless construction.

### Digital

- mm/inch conversion.
- On/off switch.
- Reset.
- Power supply: 1 battery type V357.

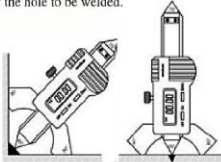


Item No.	Measuring range/mm
<b>Analog:</b> 836.423	0 - 20
<b>Digital:</b> 906.429	0 - 20
<b>Option:</b> 836.535	Spare battery



The angles (60°, 70°, 80° and 90°) serve as an aid for checking the angle of the hole to be welded.

Schut



## Thread and tolerance tables

### Thread table

Table with all standard international thread indications: metric, Ww, Gas, BSF, Pg, BA, UNC, UNF and UNEF.

### Tolerance table

Table comprising all tolerances and fits according ISO R286, up to 500 mm (table with over 6400 pairs of tolerance values for internal and external measurements).

### Conversion table mm/inch

For converting from mm to inch and from inch to mm.

Item No.	Description
835.162	Thread table
835.163	Tolerance table
835.164	Conversion table mm/inch



Schut

## Screw pitch gauges

## Flat thickness gauge

Gauge to e.g. measure the thickness of steel plating.

- Measuring range: 1 - 13 mm.
- Graduation: 0.5 mm.
- Stainless steel.



Item No.	Type of thread
856.456	Metric
856.457	Whitworth
856.458	BSP
856.459	Metric/Whitworth
856.460	Metric/Whitworth BSP
856.461	UNC/UNF

## Universal meter for bevels

Universal instrument for measurement of bevels from 0.5 to 10 mm. Direct reading of the measured bevel (30°, 45°, 60°).

- Measuring range: 30°: 15 mm,  
45°: 10 mm,  
60°: 5 mm.
- Hardened stainless steel construction.

- Delivery in a case.

Item No.	Description
838.727	Universal meter for bevels



## 0580 Combined lathe and thread cutting gauge



### Specification

- Special steel
- Cuts for trapezoidal (Acme), Whitworth and metric threads
- For angles from 40-80°

Dimensions mm	Thickness mm	Ref. No.
90 x 40	2	0580 101

## 0580 Combined lathe and thread cutting gauge



### Specification

- Special steel
- Cuts for trapezoidal (Acme), Whitworth and metric threads
- With clearance angle
- For angles from 40-80°
- For angles from 0-30°

Dimensions mm	Thickness mm	Ref. No.
90 x 40	2	0580 111

## 0580 Combined lathe and thread cutting gauge

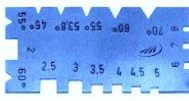


### Specification

- Special steel
- For square threads and trapezoidal threads, Whitworth and metric threads

Dimensions mm	Thickness mm	Ref. No.
90 x 40	2	0580 121

## 0580 Universal thread cutting gauge



### Specification

- Special steel
- For V-threads and square threads

Dimensions mm	Thickness mm	Ref. No.
90 x 40	2	0580 151

## 0595 ACME Thread Gauge



### Specification

- Special steel
- Cuts for trapezoidal threads

Dimensions mm	Thickness mm	Ref. No.
60 x 20	2	0595 130

## 0595 Angled thread cutter gauge



### Specification

- Special steel
- Cuts for Whitworth or metric threads

Dimensions mm	Thickness mm	Application	Ref. No.
74 x 24	2	for Whitworth thread 55°	0595 140
74 x 24	2	for metric thread 60°	0595 142

## 0595 Welding gauge



### Specification

- Special steel
- Locking screw
- Angle 60°, 70°, 80° and 90°
- To measure the height of flat welds and fillet weld thicknesses

Dimensions mm	Thickness mm	Ref. No.
20	0.1	0595 101

## 0597 Radius gauge



### Specification

- Stainless steel
- Reading parts are satin chrome finished
- To determine radii size workpieces

### Shipment

- Wooden case

Measuring range mm	Reading mm	Ref. No.
10	0.1	0597 305

## 0597 Chamfer gauge



### Specification

- Stainless steel
- Reading 0.1 mm
- Reading parts are satin chrome finished
- For simultaneously testing of the chamfer angle and the dimensional accuracy
- Dimensions: 48x30x8.5 mm

### Shipment

- Wooden case
- 3 interchangeable blades: 30°, 45°, 60°

Dimensions mm	Thickness mm	Ref. No.
10	0.1	0597 301



### 0581 DIN thread conversion and fit slide rules



0581 101

#### Model

- For reading the most important theoretical dimensions of thread tolerance



0581 123

Material	Description	Order no.
<b>Aluminium anodized</b>		
	Fine thread slide rule	0581 101
	DIN thread slide rule	0581 103
	DIN fit slide rule	0581 105
<b>Plastic</b>		
	DIN thread slide rule	0581 123
	DIN fit slide rule	0581 125

### 0582 ISO thread converter - Filetor



#### Model

- For direct reading of all standard information for determining of threads
- Plastic housing

Material	Base dimensions mm	Order no.
	60 x 30 x 110	0582 110

### 0582 ISO tolerance indicator - Tolerator



#### Model

- For direct reading of all standard information of all ISO-tolerance values
- Plastic housing

Material	Base dimensions mm	Order no.
	60 x 30 x 110	0582 120

### 0588 Tapered hole gauges



0588 101

#### Specification

- Special steel, hardened
- Reading parts matted

Material	Measuring range mm	Reading mm	Ref. No.
<b>Special steel</b>			
	0.5 - 11.0	0.1	0588 101
	0.5 - 7.0	0.1	0588 103
	2.0 - 7.0	0.1	0588 105
<b>Plastic</b>			
	0.5 - 11.0	0.1	0588 001

### 0599 Nozzle / small hole gauges

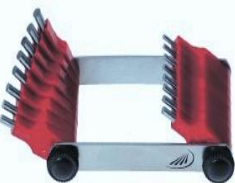


#### Specification

- Special steel
- Reading 0.1 mm
- Cone 1:10
- Nickel finished housing

Material	Measuring range mm	Ref. No.
	0 - 3	0599 101
	0 - 5	0599 102

### 0599 Nozzle gauges



#### Specification

- Steel pins
- Plastic handle
- Manufacturing tolerance  $\pm 0.01$  mm

Material	Measuring range mm	Pins	Ref. No.
	0.45 - 1.50	20	0599 151
	1.50 - 3.00	16	0599 152

### 0582 mm/inch converter



#### Specification

- Direct reading of inch to millimeter conversion
- Plastic housing

Material	Dimensions mm	Ref. No.
	60 x 30 x 110	0582 130

### 0589 Profile gauge



#### Specification

- Spring pins
- Pin dia. 1.0 mm

Material	Measuring range mm	Dimensions mm	Ref. No.
	150 x 40	154 x 85	0589 101
	300 x 60	350 x 150	0589 103

### 0590 Twist drill grinding gauge



#### Specification

- Special steel
- For twist drills
- Acute angle of 118°

Material	Measuring range max dia. mm	Ref. No.
	50	0590 101

### 0590 Twist drill grinding and inspection gauge



#### Specification

- Special steel
- Measure the length of the cutting edge and the cutting angle of 118°
- Locking screw

Material	Measuring range mm	Vernier mm	Ref. No.
	50	0.1	0590 111

### 0590 Universal grinding gauge



#### Specification

- Special steel
- Scales in mm graduation
- Angles 120°, 118°, 90°, 60° and 55°

Material	Dimensions mm	Thickness mm	Ref. No.
	95 x 63	2	0590 151

### 0595 Welding gauge blank



#### Specification

- Special steel
- Pure
- For easy testing of fillet weld thicknesses of rectangular parts

Material	Measuring range mm	Ref. No.
	3 - 12	0595 110

### 0595 Welding gauge



#### Specification

- Aluminium
- Pure
- For fast reading of the weld dimensions

Material	Measuring range flat seams mm	Measuring range corner seams mm	Ref. No.
	0 - 5	2 - 15	0595 115

### 0595 DBP weld seam gauge



#### Specification

- Stainless steel
- Reading accuracy 0.1 mm
- Easy to read the result due to the reference line in the reading window
- Quick and exact of welding

Material	Dimensions mm	Thickness mm	Ref. No.
	108 x 81.5	3.2	0595 251

## 0605 Screw pitch gauges



H	5%	Measuring range mm	Number of devices	Description	Order no.
		0.25 - 6	24	Metric threads according to ISO	0605 101
		0.4 - 7	20	Combined metric threads according to SI System	0605 102
		4 - 62	28	Whitworth threads according to DIN	0605 103
		8 - 28	6	Whitworth pipe threads	0605 104
		0.4 - 7.0 / 4 - 62	48	Combined metric SI and Whitworth threads	0605 105
		0.25 - 6.00 / 4 - 62	52	Combined metric and Whitworth	0605 106
		0.25 - 6.00 / 4 - 62 / 8 - 28	58	Metric Whitworth and pipe threads	0605 107
		4 - 42	30	US - threads	0605 108
		10 - 40	14	US - threads SAE	0605 109
		4 - 64	22	UNC - threads	0605 110
		12 - 80	16	UNF - threads	0605 111
		4 - 26	20	BSF - threads	0605 112

## 0600 Tapered hole gauges



### Model

- Reading 0.1 mm

H	5%	Measuring range mm	Order no.
<b>Special steel, flat</b>			
		1 - 15	0600 101
		15 - 30	0600 102
		30 - 45	0600 103
<b>Hardened stainless steel, round, knurled handle</b>			
		1 - 6	0600 111
		4 - 15	0600 112
		14 - 30	0600 113
		30 - 45	0600 114
		45 - 60	0600 115

## 0601 Drill and steel wire hole gauges (millimeter)



### Model

- Special steel, nitrided

H	5%	Measuring range mm	Increment mm	Order no.
		0.1 - 10	0.1	0601 103
		3 - 10	0.1	0601 120

## 0604 Radius gauges



### Model

- Concave and convex
- Locking nut
- Milled finish

H	5%	Measuring range mm	Number of blades	Order no.
<b>Special steel</b>				
		1 - 7	17	0604 002
		7.5 - 15	16	0604 004
		15.5 - 25	15	0604 006
<b>Stainless steel</b>				
		1 - 7	17	0604 202
		7.5 - 15	16	0604 204
		15.5 - 25	15	0604 206