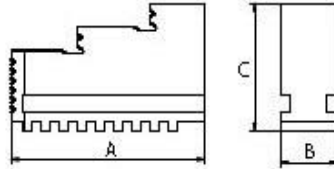




GRAMPOS INTEGRAIS INTERIORES EXTERIORES

Jaws for lathe chucks

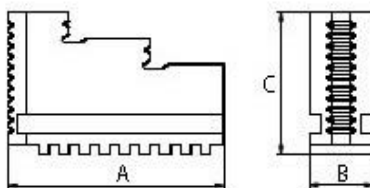
Drehbacken für Planspiral-Drehfutter
Internally stepped solid jaws for lathe chucks



Ø mm	A mm	B mm	C mm	3-Ba. / 3-Jaw Art.-Nr. / Order no.	4-Ba. / 4-Jaw Art.-Nr. / Order no.	6-Ba. / 6-Jaw Art.-Nr. / Order no.
80	32	11	28	● ZE-DB35-080	-	-
100	42	15	32	● ZE-DB35-100	● ZE-DB36-100	○ ZE-DB38-100
125	51	20	40	● ZE-DB35-125	● ZE-DB36-125	○ ZE-DB38-125
160	70	20	53	● ZE-DB35-160	● ZE-DB36-160	● ZE-DB38-160
200	85	25	54	● ZE-DB35-200	● ZE-DB36-200	● ZE-DB38-200
250	105	28	63	● ZE-DB35-250	● ZE-DB36-250	● ZE-DB38-250
315	125	32	73	● ZE-DB35-315	● ZE-DB36-315	● ZE-DB38-315
400	145	36	92	● ZE-DB35-400	● ZE-DB36-400	● ZE-DB38-400
500	180	40	100	● ZE-DB35-500	● ZE-DB36-500	○ ZE-DB38-500
630/800	225	50	110	● ZE-DB35-630/800	● ZE-DB36-630/800	○ ZE-DB38-630

Preis pro Satz / Price per set

Bohrbacken für Planspiral-Drehfutter
Externally stepped solid jaws for lathe chucks

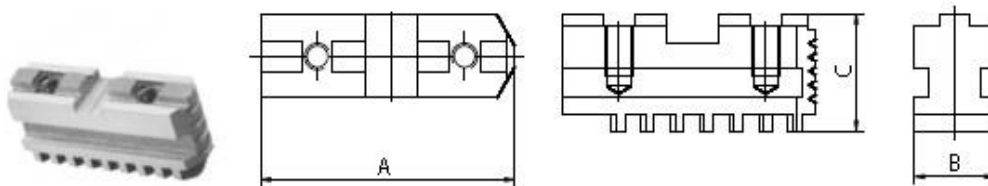


Ø mm	A mm	B mm	C mm	3-Ba. / 3-Jaw Art.-Nr. / Order no.	4-Ba. / 4-Jaw Art.-Nr. / Order no.	6-Ba. / 6-Jaw Art.-Nr. / Order no.
80	32	11	28	● ZE-BB35-080	-	-
100	42	15	32	● ZE-BB35-100	● ZE-BB36-100	○ ZE-BB38-100
125	51	20	40	● ZE-BB35-125	● ZE-BB36-125	○ ZE-BB38-125
160	70	20	53	● ZE-BB35-160	● ZE-BB36-160	● ZE-BB38-160
200	85	25	54	● ZE-BB35-200	● ZE-BB36-200	● ZE-BB38-200
250	105	28	63	● ZE-BB35-250	● ZE-BB36-250	● ZE-BB38-250
315	125	32	73	● ZE-BB35-315	● ZE-BB36-315	● ZE-BB38-315
400	145	36	92	● ZE-BB35-400	● ZE-BB36-400	● ZE-BB38-400
500	180	40	100	● ZE-BB35-500	● ZE-BB36-500	○ ZE-BB38-500
630/800	225	50	110	● ZE-BB35-630/800	○ ZE-BB36-630/800	○ ZE-BB38-630

Preis pro Satz / Price per set

Jaws for lathe chucks

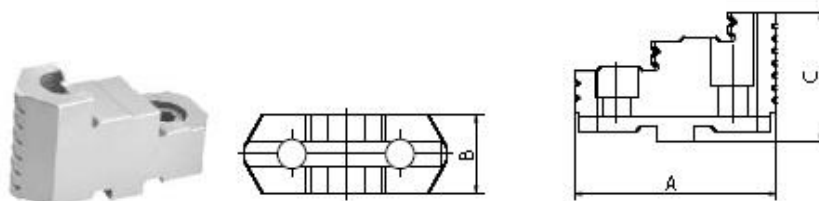
Harte Grundbacken für Planspiral-Drehfutter
Hard base jaws for lathe chucks



∅ mm	A mm	B mm	C mm	2-Ba. / 2-Jaw Art.-Nr. / Order no.	3-Ba. / 3-Jaw Art.-Nr. / Order no.	4-Ba. / 4-Jaw Art.-Nr. / Order no.	6-Ba. / 6-Jaw Art.-Nr. / Order no.
125	54	20	28	-	• ZE-GB35-125	• ZE-GB35-125	○ ZE-GB38-125
160	65	20	29	• ZE-GB31-160	• ZE-GB35-160	• ZE-GB35-160	• ZE-GB38-160
200	79	25	33	• ZE-GB31-200	• ZE-GB35-200	• ZE-GB35-200	• ZE-GB38-200
250	92	28	36	• ZE-GB31-250	• ZE-GB35-250	• ZE-GB35-250	• ZE-GB38-250
315	110	32	40	• ZE-GB31-315	• ZE-GB35-315	• ZE-GB35-315	• ZE-GB38-315
400	130	36	49	• ZE-GB31-400	• ZE-GB35-400	• ZE-GB35-400	• ZE-GB38-400
500	166	40	54	-	• ZE-GB35-500	• ZE-GB35-500	• ZE-GB38-500
630	210	50	54,5	-	• ZE-GB35-630	• ZE-GB35-630	• ZE-GB38-630
800	225	50	54,5	-	○ ZE-GB35-800	○ ZE-GB35-800	-

Preis pro Satz / Price per set

Harte, umkehrbare Aufsatzbacken für Planspiral-Drehfutter
Hard reversible top jaws for lathe chucks



∅ mm	A mm	B mm	C mm	3-Ba. / 3-Jaw Art.-Nr. / Order no.	4-Ba. / 4-Jaw Art.-Nr. / Order no.	6-Ba. / 6-Jaw Art.-Nr. / Order no.
125	66	22	38,5	• ZE-HAB35-125	• ZE-HAB35-125	○ ZE-HAB38-125
160	67	25	41,5	• ZE-HAB35-160	• ZE-HAB35-160	• ZE-HAB38-160
200	80	27	43,5	• ZE-HAB35-200	• ZE-HAB35-200	• ZE-HAB38-200
250	95	32,5	51,5	• ZE-HAB35-250	• ZE-HAB35-250	• ZE-HAB38-250
315	110	37	55	• ZE-HAB35-315	• ZE-HAB35-315	• ZE-HAB38-315
400	127	42	64,5	• ZE-HAB35-400	• ZE-HAB35-400	○ ZE-HAB38-400
500	127	42	74,5	• ZE-HAB35-500	• ZE-HAB35-500	○ ZE-HAB38-500
630/800	127	52	82	• ZE-HAB35-630/800	• ZE-HAB35-630/800	○ ZE-HAB38-630

Preis pro Satz / Price per set

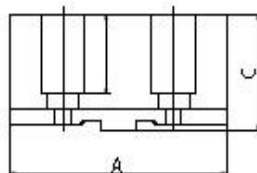
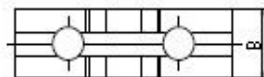
Nachträglich bezogene harte Stufenbacken müssen im Futter ausgeschliffen werden
Hard jaws bought as spare parts have to be ground on the chuck

Jaws for lathe chucks

Weiche Aufsatzbacken für Planspiral-Drehfutter
Soft top jaws for lathe chucks

- Material C45

- material C45



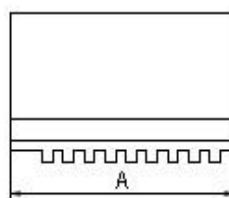
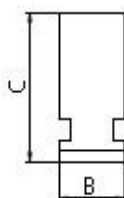
Ø mm	A mm	B mm	C mm	2-Ba. / 2-Jaw Art.-Nr. / Order no.	3-Ba. / 3-Jaw Art.-Nr. / Order no.	4-Ba. / 4-Jaw Art.-Nr. / Order no.	6-Ba. / 6-Jaw Art.-Nr. / Order no.
125	64	22	38,5	-	ZE-WAB35-125	ZE-WAB36-125	ZE-WAB38-125
160	78	25	41,5	ZE-WAB31-160	ZE-WAB35-160	ZE-WAB36-160	ZE-WAB38-160
200	90	27	43,5	ZE-WAB31-200	ZE-WAB35-200	ZE-WAB36-200	ZE-WAB38-200
250	106	32	51,5	ZE-WAB31-250	ZE-WAB35-250	ZE-WAB36-250	ZE-WAB38-250
315	120	37	55	ZE-WAB31-315	ZE-WAB35-315	ZE-WAB36-315	ZE-WAB38-315
400	140	42	64,5	ZE-WAB31-400	ZE-WAB35-400	ZE-WAB36-400	ZE-WAB38-400
500	140	42	74,5	-	ZE-WAB35-500	ZE-WAB36-500	ZE-WAB38-500
630/800	160	50	80	-	ZE-WAB35-630/800	ZE-WAB36-630/800	ZE-WAB38-630

Preis pro Satz / Price per set

Weiche Monoblockbacken für Planspiral-Drehfutter
Soft solid jaws for lathe chucks

- Material C45

- material C45



Ø mm	A mm	B mm	C mm	3-Ba. / 3-Jaw Art.-Nr. / Order no.	4-Ba. / 4-Jaw Art.-Nr. / Order no.	6-Ba. / 6-Jaw Art.-Nr. / Order no.
80	32	11	28	ZE-MB35-080	-	-
100	42	15 *	32	ZE-MB35-100	ZE-MB36-100	ZE-MB38-100*
125	51	20 **	40	ZE-MB35-125	ZE-MB36-125	ZE-MB38-125**
160	70	20	53	ZE-MB35-160	ZE-MB36-160	ZE-MB38-160
200	85	25	54	ZE-MB35-200	ZE-MB36-200	ZE-MB38-200
250	105	28	63	ZE-MB35-250	ZE-MB36-250	ZE-MB38-250
315	125	32	73	ZE-MB35-315	ZE-MB36-315	ZE-MB38-315
400	145	36	92	ZE-MB35-400	ZE-MB36-400	ZE-MB38-400
500	180	40	100	ZE-MB35-500	ZE-MB36-500	-
630/800	225	50	110	ZE-MB35-630/800	ZE-MB36-630/800	-

Preis pro Satz / Price per set

* ZE-MB38-100: abweichendes Maß B=11 / * Differing dimension B=11

** ZE-MB38-125: abweichendes Maß B=15 / ** Differing dimension B=15

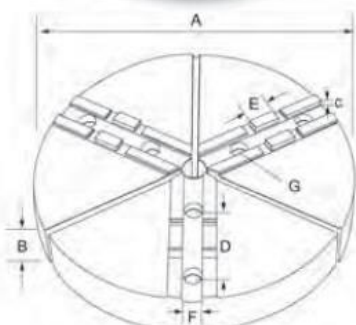


Pie jaws for three-jaw lathe chucks with ISO cross tenon

Jaws for lathe chucks



- material steel C45
- suitable for thin-walled work pieces
- large clamping area by clamping on the nearly entire circumference of the work piece
- can be used as blanks for special jaws

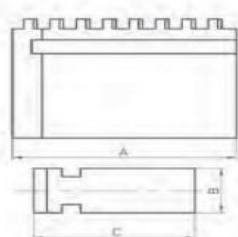


For chuck-Ø	A mm	B mm	C mm	D mm	E mm	F mm	G für/for	Thru hole mm	Art.-Nr./ Order no
160	165	40	3,5	38,1	12,68	7,9	M8/M10*	25	ZE-SAB35-160
200	190	40	3,5	44,5	12,68	7,9	M10	25	ZE-SAB35-200
250	230	40	3,5	54	19,03	12,7	M12	25	ZE-SAB35-250
250	230	50	3,5	54	19,03	12,7	M12	25	ZE-SAB35-250H
315	305	50	3,5	63,5	19,03	12,7	M12	25	ZE-SAB35-315

* Please indicate the required bore Ø in your order.

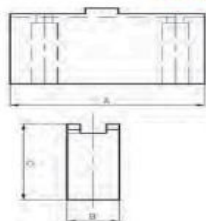
GRAMPOS PARA OUTRAS MARCAS DE BUCHAS-TOS-BISON – CONSULTAR OUTRAS

Soft solid jaws - for TOS-lathe chucks - for three-jaw lathe chucks



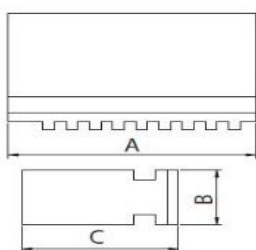
For chuck-Ø	A mm	B mm	C mm	Art.-Nr./ Order no
80	37,2	10	27,9	ZE-MB35-080TOS
100	43,2	14	34,9	ZE-MB35-100TOS
125	53,2	16	36,9	ZE-MB35-125TOS
160	67,9	18	43,1	ZE-MB35-160TOS
200	75,9	22	55,1	ZE-MB35-200TOS
250	99,4	25	59,1	ZE-MB35-250TOS
315	124,0	32	72,4	ZE-MB35-315TOS

Soft top jaws - for TOS-lathe chucks - for three-jaw lathe chucks



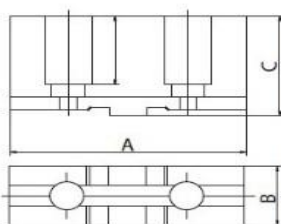
For chuck-Ø	A mm	B mm	C mm	Art.-Nr./ Order no
100	51	16	32	ZE-WAB35-100TOS
125	74	20	32	ZE-WAB35-125TOS
160	77	20	40	ZE-WAB35-160TOS
200	88	25	40	ZE-WAB35-200TOS
250	106	30	53	ZE-WAB35-250TOS
315	124	33	56	ZE-WAB35-315TOS

Soft solid jaws - for BISON-lathe chucks - for three-jaw lathe chucks



For chuck-Ø	A mm	B mm	C mm	Art.-Nr./ Order no
125	56	22	38,5	ZE-MB35-125
160	67	25	41,5	ZE-MB35-160
200	90	27	43,5	ZE-MB35-200
250	106	32	51,5	ZE-MB35-250
315	120	37	55	ZE-MB35-315
400	140	42	64,5	ZE-MB35-400
500	140	42	74,5	ZE-MB35-500
630/800	160	52	82	ZE-MB35-630/800

Soft top jaws - for BISON-lathe chucks - for three-jaw lathe chucks



For chuck-Ø	A mm	B mm	C mm	Art.-Nr./ Order no
125	51	20	40	ZE-WAB35-125
160	70	20	53	ZE-WAB35-160
200	85	25	54	ZE-WAB35-200
250	105	28	63	ZE-WAB35-250
315	125	32	73	ZE-WAB35-315
400	145	36	92	ZE-WAB35-400
500	180	40	100	ZE-WAB35-500
630/800	225	50	110	ZE-WAB35-630/800

Spare jaws for lathe chucks of further manufacturers upon request.

CREMALHEIRAS PINHÕES PARAFUSOS

Scroll plate



CREMALHEIRA

Ø mm	Art.-Nr./
80	ZE-PLR32-080
100	ZE-PLR32-100
125	ZE-PLR32-125
160	ZE-PLR32-160
200	ZE-PLR32-200
250	ZE-PLR32-250
315	ZE-PLR32-315
400	ZE-PLR32-400
500	ZE-PLR32-500
630	ZE-PLR32-630
800	ZE-PLR32-800

Pinion (Cast iron)



PINHÃO FF

Ø mm	Art.-Nr./
80	ZE-RI32-080
100	ZE-RI32-100
125	ZE-RI32-125
160	ZE-RI32-160
200	ZE-RI32-200
250	ZE-RI32-250
315	ZE-RI32-315
400	ZE-RI32-400
500	ZE-RI32-500
630	ZE-RI32-630
800	ZE-RI32-800

Pinion (Steel)



PINHÃO AÇO

Ø mm	Art.-Nr./
125	ZE-RI35-125
160	ZE-RI35-160
200	ZE-RI35-200
250	ZE-RI35-250
315	ZE-RI35-315
400	ZE-RI35-400
500	ZE-RI35-500
630	ZE-RI35-630
800	ZE-RI35-800

Studs, DIN 55027



PARAFUSOS P/DIN 55027

MT	Mesure	Art.-Nr./
3	M10 x 34	ZE-SB-3
4	M10 x 39	ZE-SB-4
5	M10 x 43	ZE-SB-5
6	M12 x 50	ZE-SB-6
8	M16 x 60	ZE-SB-8
11	M20 x 75	ZE-SB-11
15	M24 x 90	ZE-SB-15

PARAFUSOS PARA DIN 55029 CAMLOCK – CHAVES PARA BUCHAS DE TORNO

Studs, DIN 55029 (Camlock)



MT	Mesure	Required Quantity	Art.-Nr./
3	M10 x 1	3	ZE-CB-3
4	M10 x 1	3	ZE-CB-4
5	M12 x 1	6	ZE-CB-5
6	M16 x 1,5	6	ZE-CB-6
8	M20 x 1,5	6	ZE-CB-8
11	M22 x 1,5	6	ZE-CB-11
15	M24 x 1,5	6	ZE-CB-15

Wrench for lathe chucks



Ø mm	□	Art.-Nr./
80	6	ZE-SCH-080
100/125	9	ZE-SCH-100/125
160/200	11	ZE-SCH-160/200
250/315	14	ZE-SCH-250/315
400	17	ZE-SCH-400
500/630	19	ZE-SCH-500/630
800	19	ZE-SCH-800

Screw sets for top jaws

Ø / jaws	Screws	Art.-Nr./
125/3	3 x M8x25 / 6 x M8x20	ZE-SATZ-125/3
160/3	3 x M10x30 / 6 x M10x20	ZE-SATZ-125/4
200/3	3 x M10x30 / 6 x M10x20	ZE-SATZ-160/3
250/3	3 x M12x40 / 6 x M12x25	ZE-SATZ-160/4
315/3	3 x M12x40 / 6 x M12x25	ZE-SATZ-200/3
400/3	3 x M16x45 / 6 x M16x30	ZE-SATZ-200/4
125/4	4 x M8x25 / 8 x M8x20	ZE-SATZ-250/3
160/4	4 x M10x30 / 8 x M10x20	ZE-SATZ-250/4
200/4	4 x M10x30 / 8 x M10x20	ZE-SATZ-315/3
250/4	4 x M12x40 / 8 x M12x25	ZE-SATZ-315/4
315/4	4 x M12x40 / 8 x M12x25	ZE-SATZ-400/3
400/4	4 x M16x45 / 8 x M16x30	ZE-SATZ-400/4