

18400M - 18400A

6-point Sockets, Vazos Hexagonais



Chaves de Caixa Hexagonais

18400M (mm)	D ₁ (mm)	D ₂ (mm)	f (mm)	L (mm)	ΔT ₂ (g)	⊕ (pcs)	⊕
17	32.8	54	12	57	579	2	#1
19	35.3	54	13	57	590	2	#1
21	37.8	54	15	57	606	2	#1
22	39	54	15	57	620	2	#1
23	40.3	54	16	57	615	2	#1
24	41.5	54	16	57	627	2	#1
25	42.8	54	16	57	620	2	#1
26	44	54	16	57	640	2	#1
27	45.3	54	16	57	627	2	#1
28	46.5	54	16	57	640	2	#1
29	47.8	54	17	57	657	2	#1
30	49	54	17	57	657	2	#1
31	50.3	54	17	57	687	2	#1
32	51.5	54	17	57	680	2	#1
33	52.8	54	17	57	688	2	#1
34	54	54	17	57	690	2	#1
35	55.3	54	17	57	710	2	#1
36	56.5	54	17	57	700	2	#1
37	57.8	54	17	57	735	2	#1
38	59	54	17	57	720	2	#1
40	61.5	54	17	57	800	2	#1
41	62.8	54	17	57	800	2	#1
42	64	54	17	57	805	2	#1
43	65.3	54	17	57	817	2	#1
44	66.5	54	17	57	807	2	#1
45	67.8	54	17	57	863	2	#1
46	69	54	17	57	1010	2	#1
47	70.3	54	17	57	1010	2	#1
48	71.5	54	17	57	960	2	#1
50	74	54	17	57	1065	2	#1
52	76.5	54	17	57	1185	2	#1
54	79	54	17	57	1250	2	#1
55	80.3	54	17	57	1260	2	#1
56	81.5	54	17	57	1277	2	#1
58	84	54	17	57	1340	2	#1
60	86.5	54	17	57	1400	2	#1
62	89	54	17	57	1400	2	#1
63	90.3	54	17	57	1583	1	#2
65	92.8	54	17	57	1630	2	#1
67	95.3	54	17	57	1580	2	#1
68	96.5	54	17	57	1583	1	#2
70	99	54	17	57	1630	2	#1
75	105.3	86	37	80	2975	1	#2
80	111.5	86	41	85	2996	1	#2
85	117.8	86	37	90	3378	1	#2
90	124	86	40	96	3871	1	#2
95	130.3	86	43	100	4500	1	#2

18400A (inch)	D ₁ (mm)	D ₂ (mm)	f (mm)	L (mm)	ΔT ₂ (g)	⊕ (pcs)	⊕
11/16	32.8	54	12	57	579	2	#1
3/4	35.3	54	13	57	590	2	#1
13/16	37.8	54	15	57	606	2	#1
7/8	39	54	15	57	620	2	#1
15/16	41.5	54	16	57	627	2	#1
1	42.8	54	16	57	620	2	#1
1 1/16	45.3	54	16	57	627	2	#1
1 1/8	47.8	54	17	57	657	2	#1
1 3/16	49	54	17	57	657	2	#1
1 1/4	51.5	54	17	57	687	2	#1
1 5/16	54	54	17	57	690	2	#1
1 3/8	55.3	54	17	57	710	2	#1
1 7/16	57.8	54	17	57	735	2	#1
1 1/2	59	54	17	57	720	2	#1
1 9/16	61.5	54	17	57	800	2	#1
1 5/8	62.8	54	17	57	800	2	#1
1 11/16	65.3	54	17	57	817	2	#1
1 3/4	67.8	54	17	57	863	2	#1
1 13/16	69	54	17	57	1010	2	#1
1 7/8	71.5	54	17	57	960	2	#1
1 15/16	72.8	54	17	57	1000	2	#1
2	75.3	54	17	57	1060	2	#1
2 1/16	76.5	54	17	57	1185	2	#1
2 1/8	79	54	17	57	1252	2	#1
2 3/16	80.3	54	17	57	1260	2	#1
2 1/4	82.8	54	17	57	1337	2	#1
2 5/16	84	54	17	57	1340	2	#1
2 3/8	86.5	54	17	57	1400	2	#1
2 7/16	89	54	17	57	1410	2	#1
2 1/2	91.5	54	17	57	1488	2	#1
2 9/16	92.8	54	17	57	1630	2	#1
2 5/8	95.3	54	17	57	1540	2	#1
2 11/16	96.5	54	17	57	1583	1	#1
2 3/4	99	54	17	57	1625	1	#1
2 13/16	101.5	54	17	57	1705	1	#2
2 7/8	102.8	54	17	57	2029	1	#2
2 15/16	105.3	54	17	57	2675	1	#2
3	106.5	54	17	57	2705	1	#2
3 1/16	109	54	17	57	2967	1	#2
3 1/8	111.5	54	17	57	2996	1	#2
3 1/4	115.3	54	17	57	3328	1	#2
3 3/8	119	54	17	57	3339	1	#2
3 1/2	124	54	17	57	3871	1	#2

#1 C-Ring-1801C, PivO-Ring-1801A/B #2 C-Ring-1802C, PivO-Ring-1802A/B

18401M - 18401A

6-point Sockets, Thin Walled Vazos Hexagonais de Parede Delgada



18405M - 18405A

12-point Sockets, Vazos Hexagonais de 16 a 115mm



18301X

6-point Semi-Deep Sockets, Thin Walled Vazos Hexagonais Medianos de Parede Delgada



18305M - 18305A

12-point Sockets, Vazos Hexagonais Longos



Chaves de Caixa longas BI-Hexagonais de 16 a 115 mm

18300M (mm)	D ₁ (mm)	D ₂ (mm)	f (mm)	L (mm)	ΔT ₂ (g)	⊕ (pcs)	⊕
19	35.3	54	19	108	1010	2	#1
22	39	54	22	108	1010	2	#1
23	40.3	54	20	108	1063	2	#1
24	41.5	54	24	108	1000	2	#1
25	42.8	54	25	108	1065	2	#1
26	44	54	26	108	1133	2	#1
27	45.3	54	27	108	1125	2	#1
28	46.5	54	29	108	1140	2	#1
29	47.8	54	29	108	1120	2	#1
30	49	54	30	108	1179	2	#1
31	50.3	54	31	108	1125	2	#1
32	51.5	54	32	108	1200	2	#1
33	52.8	54	33	108	1200	2	#1
34	54	54	34	108	1280	2	#1
35	55.3	54	35	108	1300	2	#1
36	56.5	54	36	108	1280	2	#1
37	57.8	54	37	108	1320	2	#1
38	59	54	38	108	1423	2	#1
40	61.5	54	38	108	1415	2	#1
41	62.8	54	38	108	1450	2	#1
42	64	54	38	108	1550	2	#1
44	66.5	54	38	108	1630	2	#1
45	67.8	54	38	108	1660	2	#1
46	69	54	38	108	1680	2	#1
48	71.5	54	38	108	1800	2	#1
50	74	54	38	108	1850	2	#1
52	76.5	54	38	108	1770	2	#1
55	80.3	54	38	108	1850	2	#1
60	86.5	54	38	108	2047	2	#1
65	92.8	54	38	108	2310	2	#1
70	99	54	38	108	2440	1	#1
75	105.3	86	52	108	2848	1	#2
80	111.5	86	49	108	4038	1	#2
85	117.8	86	50	108	4000	1	#2
90	124	86	57	108	4500	1	#2
95	130.3	86	55	108	4400	1	#2

#1 C-Ring-1801C, PivO-Ring-1801A/B #2 C-Ring-1802C, PivO-Ring-1802A/B

18301M - 18301A

6-point Deep Sockets, Thin Walled Vazos Hexagonais Longos de Parede Delgada



Chaves de Caixa longas Hexagonais de paredes finas

18301M (mm)	D ₁ (mm)	D ₂ (mm)	f (mm)	L (mm)	ΔT ₂ (g)	⊕ (pcs)	⊕
11/16	29.8	53	17	108	692	2	#1
3/4	32.3	53	19	108	725	2	#1
13/16	34.8	53	21	108	750	2	#1
7/8	36	53	22	108	770	2	#1
15/16	38.5	53	24	108	800	2	#1
1	41.5	53	27	108	860	2	#1
1 3/16	46	53	30	108	910	2	#1
1 1/4	48.5	53	32	108	970	2	#1
1 3/8	52.3	53	35	108	990	2	#1
1 1/2	56	53	38	108	1025	2	#1
1 5/8	59.8	53	38	108	1213	2	#1
1 13/16	66	53	38	108	1400	2	#1

#1 C-Ring-1801C, PivO-Ring-1801A/B #2 C-Ring-1802C, PivO-Ring-1802A/B

18600M - 18600A

18600M (mm)	D ₁ (mm)	D ₂ (mm)	f (mm)	L (mm)	ΔT ₂ (g)	⊕ (pcs)	⊕
17	29.8	53	12	57	481	2	#1
19	32.3	53	13	57	492	2	#1
21	34.8	53	15	57	519	2	#1
22	36	53	15	57	520	2	#1
24	38.5	53	16	57	520	2	#1
27	42.3	53	16	57	540	2	#1
30	46	53	21	62	572	2	#1
32	48.5	53	21	62	600	2	#1
33	49.8	53	21	62	613	2	#1
35	52.3	53	21	62	630	2	#1
37	54.8	53	21	62	630	2	#1
38	56	53	25	66	705	2	#1
41	59.8	53	25	66	740	2	#1
46	69	53	29	70	900	2	#1
50	71	53	35	70	940	2	#1

18401A (inch)

18401A (inch)	D ₁ (mm)	D ₂ (mm)	f (mm)	L (mm)	ΔT ₂ (g)	⊕ (pcs)	⊕
---------------	---------------------	---------------------	--------	--------	---------------------	---------	---

Jogo de 15 chaves de impacto de 3/4" e 1" para reparação de camiões

REF. 19.43151

3/4"
+
1"

15 Piece truckrepair set

CONTENTS:
5 impact sockets Torx® internal T60, T70, T80, T90, T100
4 impact sockets Torx® external E18, E20, E22, E24
4 impact sockets internal hex. 17 - 19 - 22 - 24 mm
+ 3/4" and 1" hexagon bitholder 22 mm
+ Hexagon spanner 2,5 mm
PACKAGE: blow-mold case



Impact Sockets

1"

18866A Adaptador No Warranty Adaptadores Sin Garantia Adaptador M/F



	Ø (sq)	Ø (sq)	L (mm)	Ø (sq)	Ø (sq)	Ø (sq)
18866A	1"	3/4"	65	560	1	*1
18866A-200	1"	3/4"	200	1100	1	*1

*1 C-Ring=1801G, P/W-Ring=1801A/B **22200-231**

⚠ Adapting down from bigger square drive to smaller square drive may lead to excessive torque load and possibly cause breakage. Always stay within safe torque of the smaller square drive.

18877A Adaptor Adaptador Adaptador M/F



	Ø (sq)	Ø (sq)	L (mm)	Ø (sq)	Ø (sq)	Ø (sq)
18877A	1"	1.1/2"	80	935	1	*1

*1 C-Ring=1801G, P/W-Ring=1801A/B **22200-231**

Jogos de chaves de impacto de 1"

REF. 19.23031

1"

Impact socket set long



CONTENTS:
7 impact sockets
24 - 27 - 30 - 32 - 33 - 36 - 41 mm
PACKAGE:
plastic case

REF.19.40008

1"

Impact socket set, long

CONTENTS:
4 Impact sockets, long size
27 - 30 - 32 - 33 mm
PACKAGE:
plastic tray & metal case



Chave impacto com sextavada interior

Chave impacto com quadrado

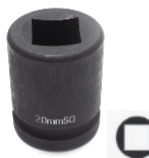
Chave impacto com 8 cantos 2x4

Jogos de chaves de caixa de impacto



Ref.18105

100mm comprimeto
10-12-14-16-17-
19-22-24-27-30-32-36



Ref.18103

17mm
19mm
20mm
21mm
13/16-15/16



Ref.18415

19-22-24-27-30-32
35-38-46



7 chaves normais

24 - 27 - 30 - 32 - 33 - 36
- 41 mm



4 chaves longas

27 - 30 - 32 - 33 mm

Barras de torção c/chave de caixa

Ch. impacto extra-longa para porcas de rodados

Chave impacto longa pª porcas Aperto de Molas

Chaves Impacto especiais para rodado trazeiro



Ref. 18101M

24X350Nm
27X350Nm
27X450Nm
29X400Nm
30X500Nm
32X450Nm
32X550Nm
32X600Nm
32X700Nm
33X550Nm
33X600Nm
36X600Nm



Ref.18102M

270mm/400mm
23mm
24mm
26mm
27mm
29mm
30mm
32mm
33mm
34mm
36mm
38mm



Ref. 18104M

24mm
27mm
28mm
30mm
32mm
33mm
34mm
36mm



Ref.18316

1.1/2"X13/16"
35x17mm
38x20mm
41x19mm
41x21mm



Ref.18317

13/16"
17mm
17.5mm
19mm
20mm
21mm
22mm



PW8P

35x17
38x20
41x19
41x21