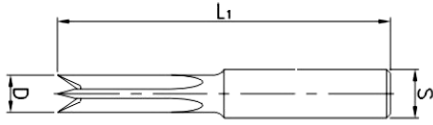


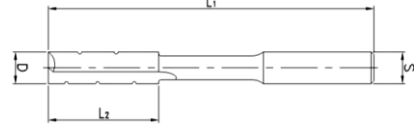


Broca para ranhuras (máquina de movimento vibratório)



HS				
D	L1	S	Z	Ref.
6	90	13x40	4	A200.006.350.13
8	90	13x40	4	A200.008.355.13
10	105	13x40	4	A200.010.365.13
12	115	13x40	4	A200.012.375.13
14	125	13x40	4	A200.014.385.13
16	130	13x40	4	A200.016.390.13
HS				
D	L1	S	Z	Ref.
8	75	9,5	2	A206.008.128.95
10	75	9,5	2	A206.010.128.95
12	75	9,5	2	A206.012.128.95
8	75	10	2	A206.008.128.10
10	75	10	2	A206.010.128.10
12	75	10	2	A206.012.128.10

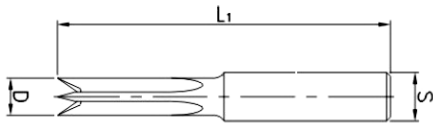
Broca para furar e ranhar



SP						
D	L2	L1	S	Z	Ref. RH	Ref. LH
6	35	110	13	2	A196.006.135.13	A196.006.035.13
7	35	115	13	2	A196.007.135.13	A196.007.035.13
8	38	120	13	2	A196.008.138.13	A196.008.038.13
9	40	125	13	2	A196.009.140.13	A196.009.040.13
10	42	130	13	2	A196.010.142.13	A196.010.042.13
11	45	135	13	2	A196.011.145.13	A196.011.045.13
12	48	140	13	2	A196.012.148.13	A196.012.048.13
13	50	145	13	2	A196.013.150.13	A196.013.050.13
14	54	150	13	2	A196.014.154.13	A196.014.054.13
15	57	155	13	2	A196.015.157.13	A196.015.057.13
16	57	160	13	2	A196.016.157.13	A196.016.057.13
18	65	170	13	2	A196.018.165.13	A196.018.065.13
20	70	180	13	2	A196.020.170.13	A196.020.070.13
22	70	185	13	2	A196.022.170.13	A196.022.070.13
24	75	185	13	2	A196.024.175.13	A196.024.075.13
26	83	185	13	2	A196.026.183.13	A196.026.083.13

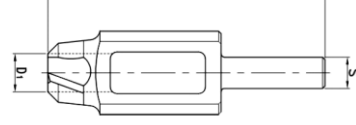
Também disponível com S= 16mm - S= 16mm sobre pedido

Broca para ranhuras (máquina de movimento vibratório)



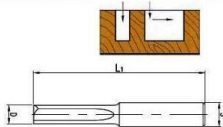
HS				
D	L1	S	Z	Ref.
6	60	12x30	2	A194.006.125.12
8	60	12x30	2	A194.008.125.12
10	60	12x30	4	A194.010.125.12
12	60	12x30	4	A194.012.125.12
14	60	12x30	4	A194.014.125.12
HS				
D	L1	S	Z	Ref.
8	95	13x40	2	A199.008.135.13
10	105	13x40	2	A199.010.135.13
12	115	13x40	2	A199.012.138.13

Broca para rolhas



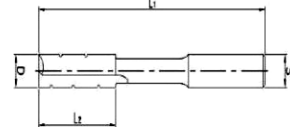
SP				
D1	L1	S	Z	Ref.
10	140	13x50	4	A215.010.112.13
12	140	13x50	4	A215.012.112.13
15	140	13x50	4	A215.015.112.13
20	140	13x50	4	A215.020.112.13
25	140	13x50	5	A215.025.112.13
30	140	13x50	5	A215.030.112.13
35	160	16x50	5	A215.035.112.16
40	160	16x50	6	A215.040.112.16
45	160	16x50	6	A215.045.112.16
50	160	16x50	6	A215.050.112.16

Broca para ranhuras (máquina de movimento vibratório)



HS						
D	L2	L1	S	Z	Ref. RH	Ref. LH
6	50	90	13	3	A197.006.150.13	A197.006.050.13
8	55	95	13	3	A197.008.155.13	A197.008.055.13
10	65	105	13	3	A197.010.165.13	A197.010.065.13
12	75	115	13	3	A197.012.175.13	A197.012.075.13
14	85	125	13	3	A197.014.185.13	A197.014.085.13
16	90	130	13	3	A197.016.190.13	A197.016.090.13
18	90	130	13	3	A197.018.190.13	A197.018.090.13

Broca para furar e ranhar



SP						
D	L2	L1	S	Z	Ref. RH	Ref. LH
6	35	110	13	2	A196.006.135.13	A196.006.035.13
7	35	115	13	2	A196.007.135.13	A196.007.035.13
8	38	120	13	2	A196.008.138.13	A196.008.038.13
9	40	125	13	2	A196.009.140.13	A196.009.040.13
10	42	130	13	2	A196.010.142.13	A196.010.042.13
11	45	135	13	2	A196.011.145.13	A196.011.045.13
12	48	140	13	2	A196.012.148.13	A196.012.048.13
13	50	145	13	2	A196.013.150.13	A196.013.050.13
14	54	150	13	2	A196.014.154.13	A196.014.054.13
15	57	155	13	2	A196.015.157.13	A196.015.057.13
16	57	160	13	2	A196.016.157.13	A196.016.057.13
18	65	170	13	2	A196.018.165.13	A196.018.065.13
20	70	180	13	2	A196.020.170.13	A196.020.070.13
22	70	185	13	2	A196.022.170.13	A196.022.070.13
24	75	185	13	2	A196.024.175.13	A196.024.075.13
26	83	185	13	2	A196.026.183.13	A196.026.083.13

Também disponível com S= 16mm - S= 16mm sobre pedido