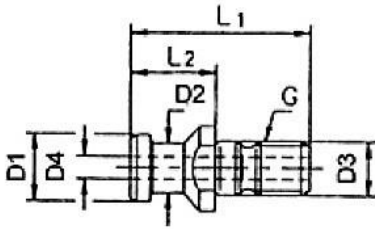




TIRANTES CHAVES PARA TIRANTES

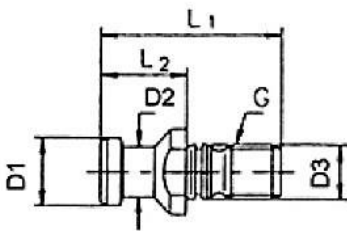
Pull studs

DIN 69872 A, mit Bohrung
DIN 69872 A, with bore



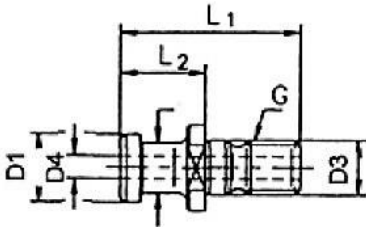
Größe / Size	G	D1 mm	D2 mm	D3 mm	D4 mm	L1 mm	L2 mm	Art.-Nr. / Order no.
SK 30	M 12	13	9	13	--	44	24	● 13-9884A-30-44
SK 40	M 16	19	14	17	7	54	26	● 13-9884A-40-54
SK 50	M 24	28	21	25	11,5	74	36	● 13-9884A-50-74

DIN 69872 B, ohne Bohrung
DIN 69872 B, without bore



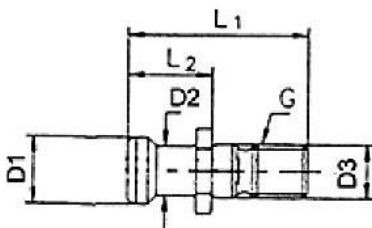
Größe / Size	G	D1 mm	D2 mm	D3 mm	L1 mm	L2 mm	Art.-Nr. / Order no.
SK 30	M 12	13	9	13	44	24	● 13-9884B-30-44
SK 40	M 16	19	14	17	54	26	● 13-9884B-40-54
SK 50	M 24	28	21	25	74	36	● 13-9884B-50-74

ISO 7388 II A, mit Bohrung
ISO 7388 II A, with bore



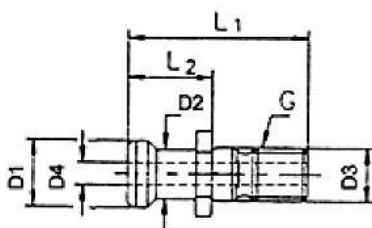
Größe / Size	G	D1 mm	D2 mm	D3 mm	D4 mm	L1 mm	L2 mm	Art.-Nr. / Order no.
SK 40	M 16	19	14	17	7	54	26	● 13-9885A-40-54
SK 50	M 24	28	21	25	11,5	74	36	● 13-9885A-50-74

ISO 7388 II B-OB, ohne Bohrung
ISO 7388 II B-OB, without bore



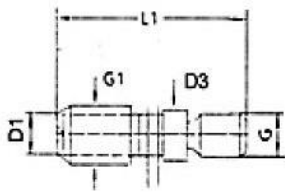
Größe / Size	G	D1 mm	D2 mm	D3 mm	L1 mm	L2 mm	Art.-Nr. / Order no.
SK 40	M 16	18,95	12,95	17	44,5	16,40	● 13-9885BOB-40-45
SK 50	M 24	29,10	19,80	25	65,5	25,56	● 13-9885BOB-50-66

ISO 7388 II B-MB, mit Bohrung
ISO 7388 II B-MB, with bore



Größe / Size	G	D1 mm	D2 mm	D3 mm	D4 mm	L1 mm	L2 mm	Art.-Nr. / Order no.
SK 40	M 16	18,95	12,95	17	7	44,5	16,40	● 13-9885BMB-40-45
SK 50	M 24	29,10	19,80	25	11,5	65,5	25,56	● 13-9885BMB-50-66

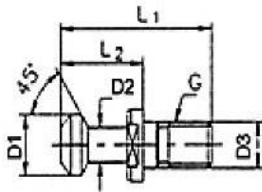
Pull studs



S 20x2, mit Sägewinde S 20x2, with saw thread

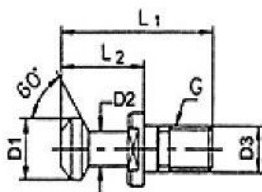
Größe / Size	G	G1	D1 mm	D3 mm	L1 mm	Art.-Nr. / Order no.
SK 40	M 16	S 20x2	16,6	17	58	● 13-9886B-40-58

MAS BT, 45° MAS BT, 45°



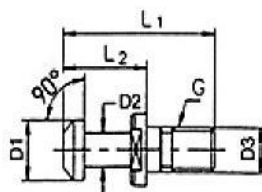
Größe / Size	G	D1 mm	D2 mm	D3 mm	L1 mm	L2 mm	Art.-Nr. / Order no.
SK 30	M 12	11	7	13	43	24	● 13-9882B-30-45
SK 40	M 16	15	10	17	60	35	● 13-9882B-40-45
SK 50	M 24	23	17	25	85	45	● 13-9882B-50-45

MAS BT, 60° MAS BT, 60°



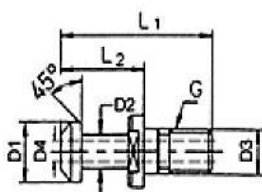
Größe / Size	G	D1 mm	D2 mm	D3 mm	L1 mm	L2 mm	Art.-Nr. / Order no.
SK 30	M 12	11	7	13	43	24	● 13-9882B-30-60
SK 40	M 16	15	10	17	60	35	● 13-9882B-40-60
SK 50	M 24	23	17	25	85	45	● 13-9882B-50-60

MAS BT, 90° MAS BT, 90°



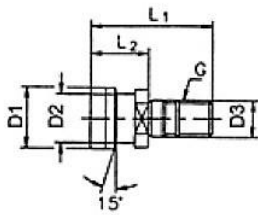
Größe / Size	G	D1 mm	D2 mm	D3 mm	L1 mm	L2 mm	Art.-Nr. / Order no.
SK 40	M 16	15	10	17	60	35	● 13-9882B-40-90
SK 50	M 24	23	17	25	85	45	● 13-9882B-50-90

MAS BT, 45°, mit Bohrung MAS BT, 45°, with bore



Größe / Size	G	D1 mm	D2 mm	D3 mm	D4 mm	L1 mm	L2 mm	Art.-Nr. / Order no.
SK 40	M 16	15	10	17	7	60	35	● 13-9882A-40-45
SK 50	M 24	23	17	25	11,5	85	45	● 13-9882A-50-45

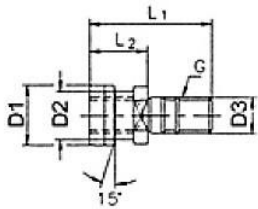
Pull studs



OTT, ohne Bohrung OTT, without internal bore

Größe / Size	G	D1 mm	D2 mm	D3 mm	L1 mm	L2 mm	Art.-Nr. / Order no.
SK 40	M 16	25,0	21,1	17	53	25	13-9883-40
SK 50	M 24	39,5	32,0	25	65	25	13-9883-50

OTT, mit Innengewinde OTT, with internal thread



Größe / Size	G	D1 mm	D2 mm	D3 mm	L1 mm	L2 mm	Art.-Nr. / Order no.
SK 40	M 16	25,0	21,1	17	53	25	13-9883I-40
SK 50	M 24	39,5	32,0	25	65	25	13-9883I-50

Spezielle Anzugsbolzen für sämtliche
Maschinen auf Anfrage

*Special pull studs for all machines upon
request*

Steckschlüssel für Anzugsbolzen Socket wrenches for pull studs



Sicherheits-Steckschlüssel SK und MAS BT Security socket wrenches SK and MAS BT

Größe / Size	DIN	Art.-Nr. / Order no.
SK 40	DIN 69872	13-SCHA-SK40
SK 50	DIN 69872	13-SCHA-SK50
BT 40	MAS BT	13-SCHA-BT40
BT 50	MAS BT	13-SCHA-BT50