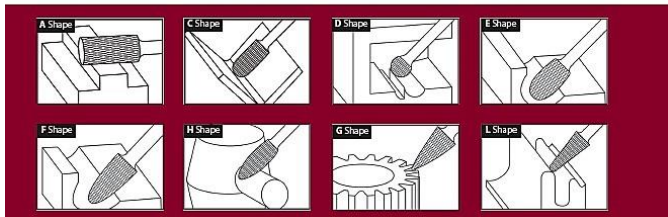


procut INOX RANGE

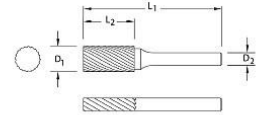
Procut Inox Range has a specially designed geometry to suit growing market demands for stainless steel applications. This is a cost effective alternative to standard solutions due to the greater rate of stainless steel stock removal and on Ferritic, Austenitic & Martensitic based materials.

Features & Benefits

- Developed cutting geometry - generating high stock removal on Inox components
- High performance grinding - ensuring production savings and reduced downtime
- Specifically developed Inox cutting geometry - reducing heat build up at the cutting edges and workpiece
- Manufactured from high quality sintered tungsten carbide - guaranteed high performance and durability
- CNC Machined - High consistent quality
- Combination of ATA air tool with Inox cut geometry - gives a guaranteed smoother grinding operation
- Manufactured to strict quality control standards - incorporates 100% inspection of brazed joints



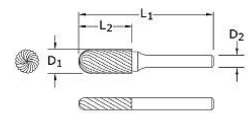
INOX RANGE A



Inox A - Cylinder without Endcut

Product Code	Cutting Diameter D1	Length of Cut L2	Shank Diameter D2	Overall Length L1
A303 14-3INOX	3.0	14.0	3.0	38
A30612-3INOX	6.3	12.7	3.0	45
A60618-3INOX	6.0	18.0	6.0	50
A60820-3INOX	8.0	19.0	6.0	64
A61020-3INOX	9.6	19.0	6.0	64
A61225-3INOX	12.7	25.0	6.0	70

INOX RANGE C

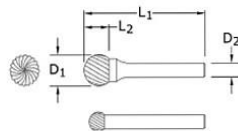


Inox C - Ball Nosed Cylinder

Product Code	Cutting Diameter D1	Length of Cut L2	Shank Diameter D2	Overall Length L1
C30312-3INOX	3.0	14.0	3.0	38
C30612-3INOX	6.3	12.7	3.0	45
C60618-3INOX	6.0	18.0	6.0	50
C60820-3INOX	8.0	19.0	6.0	64
C61020-3INOX	9.6	19.0	6.0	64
C61225-3INOX	12.7	25.0	6.0	70

- Wear Eye Protection
- Wear Hearing Protection
- Observe the recommended rotational speed, especially when using bus with long shank
- Wear Protective Gloves

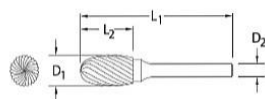
INOX RANGE D



Inox D - Ball Shape

Product Code	Cutting Diameter D1	Length of Cut L2	Shank Diameter D2	Overall Length L1
D30303-3INOX	3.0	2.5	3.0	38
D30606-3INOX	6.3	5.0	3.0	38
D60606-3INOX	6.0	4.7	6.0	50
D60808-3INOX	8.0	6.0	6.0	52
D61010-3INOX	9.6	8.0	6.0	54
D61212-3INOX	12.7	11.0	6.0	56

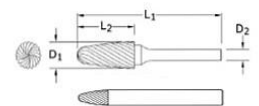
INOX RANGE E



Inox E - Oval Shape

Product Code	Cutting Diameter D1	Length of Cut L2	Shank Diameter D2	Overall Length L1
E60815-3INOX	8.0	15.0	6.0	60
E61015-3INOX	9.6	16.0	6.0	60
E61220-3INOX	12.7	22.0	6.0	67

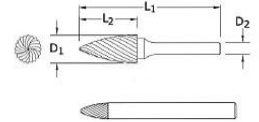
INOX RANGE F



Inox F - Ball Nosed Tree Shape

Product Code	Cutting Diameter D1	Length of Cut L2	Shank Diameter D2	Overall Length L1
F30312-3INOX	3.0	14.0	3.0	38
F30612-3INOX	6.3	12.7	3.0	45
F60618-3INOX	6.0	18.0	6.0	50
F60820-3INOX	8.0	20.0	6.0	65
F61020-3INOX	9.6	19.0	6.0	64
F61225-3INOX	12.7	25.0	6.0	70

INOX RANGE G



Inox G - Pointed Tree Shape

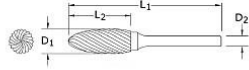
Product Code	Cutting Diameter D1	Length of Cut L2	Shank Diameter D2	Overall Length L1
G60618-3INOX	6.0	18.0	6.0	50
G60820-3INOX	8.0	19.0	6.0	64
G61020-3INOX	9.6	19.0	6.0	64
G61225-3INOX	12.7	25.0	6.0	70

Ordering Information

For more information and / or to place an order, please contact ATA Customer Service at:
 US Offices: +1 230-928-7744 or by email sales@atatools.com
 UK Offices: +44 (0) 1530 261 145 or by email sales@atagroupuk.com
 International Offices: +353 (0) 49 432 6178 or by email sales@atagroup.ie

- Wear Eye Protection
- Wear Hearing Protection
- Observe the recommended rotational speed, especially when using bus with long shank
- Wear Protective Gloves

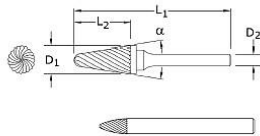
INOX RANGE H



Inox H - Flame Shape

Product Code	Cutting Diameter D1	Length of Cut L2	Shank Diameter D2	Overall Length L1
H60820-3INOX	8.0	19.0	6.0	64
H61020-3INOX	9.6	19.0	6.0	65
H61232-3INOX	12.7	32.0	6.0	77

INOX RANGE L



Inox L - Ball Nosed Cone Shape

Product Code	Cutting Diameter D1	Length of Cut L2	Shank Diameter D2	Overall Length L1	Included Angle α
L60822-3INOX	8.0	25.4	6.0	70	14°
L61020-3INOX	10.0	20.0	6.0	65	14°
L61228-3INOX	12.7	32.0	6.0	77	14°

Ordering Information

For more information and / or to place an order, please contact ATA Customer Service at:
US Offices: +1 330-928-7744 or by email sales@atagroupuk.com
UK Offices: +44 (0) 1530 261 145 or by email sales@atagroupuk.com
International Offices: +353 (0) 49 432 6178 or by email sales@atagroup.ie

procut
part of the ata group

INOX RANGE SETS

Features & Benefits - New Set

FEATURES
 Compact
 Versatile assortment

BENEFITS
 Easy to carry
 Ideal for demonstrations, samplings or special promotions



Line	Description Type	Type	Contents	Cut - Inox Part No.
Sets	BURS INOX	Spcs INOX CUT	A61225-3INOX; C61225-3INOX; F61225-3INOX; G61225-3INOX; L61228-3INOX	>SET11PC-HB-SXMM-EX

INOX RANGE SPEED GUIDE

MATERIAL GROUPS	N/mm ²	BLS	EN	DIN
Free Machining	<850	303 521, 416 537	EN56 EN60	X100CRNiS189; X12CrMoS17
Austenitic	<850	304 515, 321 517, 316S, 320 512	EN80, EN58 +C EN58L, 316	X5CrNi189; X10CrNiMoTi1810
Ferritic; Austenitic & Martensitic	<1000	317 516, 316 516	EB58 b.e./t Duplex alloys	XbCrNiMo275; X4CrNiMoN6257

INOX	Burr Head Ø	Maximum Operating Speed	Speed Range	Suggested Air Tools
	3mm	100,000	60,000 - 80,000	SP75R / ST100
6mm	65,000	30,000 - 45,000	SD45LR / 550	
10mm	55,000	19,000 - 30,000	SD30LR / SD37LR	
12mm	35,000	15,000 - 22,000	SMD25LR-CA / SMD3LR-CA	

Recommended Speeds are based on standard shank length of 45mm; max overhang of 10mm

Front & Rear Exhaust options available for certain models; refer to ATA Air Tool Catalogue



Wear Eye Protection



Wear Hearing Protection



Observe the recommended rotational speed, especially when using burrs with long shank



Wear Protective Gloves