



Schut Geometrical Metrology

SQUARES

Flat steel squares

- Lapped measuring faces.
- Accuracy according DIN 875.



670.003

Item No.	Dimensions mm	Cross-section/mm
Class III:		
670.061	100 x 70	20 x 5
670.065	300 x 175	35 x 7
670.066	400 x 200	35 x 7
670.067	500 x 250	40 x 8
DIN 875/2:		
670.041	75 x 50	15 x 5
670.042	100 x 70	20 x 5
670.043	150 x 100	25 x 5
670.044	200 x 130	30 x 6
670.045	250 x 165	35 x 7
670.046	300 x 175	35 x 7
670.047	400 x 200	35 x 7
670.048	500 x 250	40 x 8
670.049 ¹	600 x 300	40 x 8
670.051 ^{1,2}	1000 x 500	50 x 10

Item No.	Dimensions mm	Cross-section/mm
DIN 875/1:		
670.022	75 x 50	15 x 5
670.023	100 x 70	20 x 5
670.024	150 x 100	25 x 5
670.025	200 x 130	30 x 6
670.026	250 x 165	35 x 7
670.027	300 x 200	40 x 8
670.028	400 x 265	45 x 10
670.029	500 x 330	50 x 10
670.030 ¹	600 x 400	50 x 10

Item No.	Dimensions mm	Cross-section/mm
DIN 875/0 (with inspection report):		
670.002	75 x 50	15 x 5
670.003	100 x 70	20 x 5
670.004	150 x 100	25 x 5
670.005	200 x 130	30 x 6
670.006	250 x 165	35 x 7
670.007	300 x 200	40 x 8
670.008	400 x 265	45 x 10
670.009	500 x 330	50 x 10

¹ Incl. transport package.
² Delivery ex Groningen, Netherlands.

SQUARES

Schut for Precision

Flat stainless steel squares

Item No.	Dimensions mm	Cross-section/mm
DIN 875/2:		
670.142	75 x 50	15 x 5
670.143	100 x 70	20 x 5
670.144	150 x 100	25 x 5
670.145	200 x 130	30 x 6

Item No.	Dimensions mm	Cross-section/mm
DIN 875/1:		
670.122	75 x 50	15 x 5
670.123	100 x 70	20 x 5
670.124	150 x 100	25 x 5
670.125	200 x 130	30 x 6
670.126	250 x 165	35 x 7
670.127	300 x 200	40 x 8
670.128	400 x 265	45 x 10
670.129	500 x 330	50 x 10
670.130 ¹	600 x 400	50 x 10

Item No.	Dimensions mm	Cross-section/mm
DIN 875/0, hardened (with inspection report):		
670.751	50 x 40	12 x 5
670.752	75 x 50	15 x 5
670.753	100 x 70	20 x 5
670.754	150 x 100	25 x 5
670.755	200 x 130	30 x 6
670.758	250 x 165	35 x 7
670.759	300 x 200	40 x 8
670.760	400 x 265	45 x 10
670.761	500 x 330	50 x 10

¹ Incl. transport package.

- Hardened stainless steel.
- Lapped measuring faces.
- Accuracy according DIN 875.



670.753

Wooden cases for squares

Wooden cases for flat squares.



670.466



Item No.	Dimensions square/mm
670.464	50 x 40 / 75 x 50
670.465	100 x 70
670.466	150 x 100
670.467	200 x 130
670.468	250 x 165 / 300 x 200
670.888	400 x 265
670.470	500 x 330

Flat stainless steel squares

- Hardened stainless steel.
- Lapped measuring faces.
- Accuracy according DIN 875.

Item No.	Dimensions mm	Cross-section/mm
DIN 875/1:		
907.301	75 x 50	15 x 5
907.302	100 x 70	20 x 5
907.303	150 x 100	25 x 5
907.304	200 x 130	30 x 6
907.305	250 x 160	35 x 7
907.306	300 x 200	40 x 8

Item No.	Dimensions mm	Cross-section/mm
DIN 875/0:		
907.282	50 x 40	12 x 3.5
907.283	75 x 50	15 x 5
907.284	100 x 70	20 x 5
907.285	150 x 100	25 x 7
907.286	200 x 130	30 x 7



907.284

Steel squares with base

- Lapped measuring faces.
- Accuracy according DIN 875.



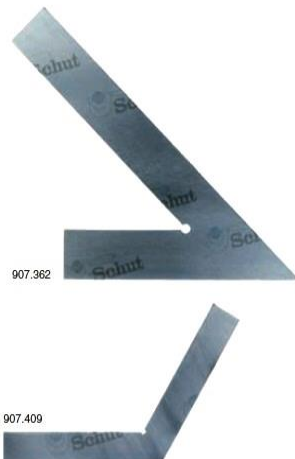
670.203

Item No.	Dimensions mm	Cross-section/mm
Class III:		
670.264	250 x 165	35 x 7
670.265	300 x 175	35 x 7
670.267	500 x 250	40 x 8
670.268	600 x 300	40 x 8
670.270 ²	1000 x 500	50 x 10
DIN 875/2:		
670.241	75 x 50	15 x 5
670.242	100 x 70	20 x 5
670.243	150 x 100	25 x 5
670.244	200 x 130	30 x 6
670.245	250 x 165	35 x 7
670.246	300 x 175	35 x 7
670.247	400 x 200	35 x 7
670.248	500 x 250	40 x 8
670.249 ¹	600 x 300	40 x 8
670.250 ¹	750 x 375	45 x 10
670.251 ^{1,2}	1000 x 500	50 x 10

Item No.	Dimensions mm	Cross-section/mm
DIN 875/1:		
670.222	75 x 50	15 x 5
670.223	100 x 70	20 x 5
670.224	150 x 100	25 x 5
670.225	200 x 130	30 x 6
670.226	250 x 165	35 x 7
670.227	300 x 200	40 x 8
670.228	400 x 265	45 x 10
670.229	500 x 330	50 x 10
670.230 ¹	600 x 400	50 x 10
DIN 875/0 (with inspection report):		
670.202	75 x 50	15 x 5
670.203	100 x 70	20 x 5
670.204	150 x 100	25 x 5
670.205	200 x 130	30 x 6
670.206	250 x 165	35 x 7
670.207	300 x 200	40 x 8
670.208	400 x 265	45 x 10
670.209	500 x 330	50 x 10

¹ Incl. transport package.
² Delivery ex Groningen, Netherlands.

Flat steel squares



907.362

907.409

Item No.	Dimensions mm	Cross-section/mm
Acute angle squares 45°, DIN 875/2:		
907.359	100 x 70	20 x 5
907.360	120 x 80	20 x 5
907.361	150 x 100	20 x 5
907.362	200 x 130	25 x 5
Acute angle squares 60°, DIN 875/2:		
907.383	100 x 70	20 x 5
907.384	120 x 80	20 x 5
907.385	150 x 100	20 x 5
907.386	200 x 130	25 x 5
Hexagon squares 120°, DIN 875/2:		
907.407	50 x 50	15 x 5
907.408	75 x 75	18 x 5
907.409	100 x 100	20 x 5
907.410	150 x 150	25 x 5
907.411	200 x 200	30 x 6
Octagon squares 135°, DIN 875/2:		
907.417	50 x 50	15 x 5
907.418	75 x 75	18 x 5
907.419	100 x 100	20 x 5
907.420	150 x 150	25 x 5
907.421	200 x 200	30 x 6

Stainless steel squares with base

Item No.	Dimensions mm	Cross-section/mm
DIN 875/2:		
670.342	75 x 50	15 x 5
670.343	100 x 70	20 x 5
670.344	150 x 100	25 x 5
670.345	200 x 130	30 x 6
670.346	250 x 165	35 x 7
670.347	300 x 200	40 x 8

DIN 875/1:		
670.322	75 x 50	15 x 5
670.323	100 x 70	20 x 5
670.324	150 x 100	25 x 5
670.325	200 x 130	30 x 6
670.326	250 x 165	35 x 7
670.327	300 x 200	40 x 8
670.328	400 x 265	45 x 10
670.329	500 x 330	50 x 10
670.330 ¹	600 x 400	50 x 10

DIN 875/0, hardened (with inspection report):		
670.851	50 x 40	12 x 5
670.852	75 x 50	15 x 5
670.853	100 x 70	20 x 5
670.854	150 x 100	25 x 5
670.855	200 x 130	30 x 6
670.762	250 x 165	35 x 7
670.763	300 x 200	40 x 8
670.764	400 x 265	45 x 10
670.765	500 x 330	50 x 10

¹ Incl. transport package.

- Hardened stainless steel.
- Lapped measuring faces.
- Accuracy according DIN 875.



670.323

All squares can be delivered with an inspection report or a certificate of a recognized measuring laboratory.

For the larger squares it is important to realize that external factors affect the stability of squares, which may influence the accuracy unfavourably.

Wooden cases for squares

Wooden cases for squares with base.



670.884

Item No.	Dimensions square/mm
670.464	50 x 40/75 x 50
670.465	100 x 70
670.884	150 x 100
670.885	200 x 130
670.887	250 x 165/300 x 200
670.888	400 x 265
670.889	500 x 330

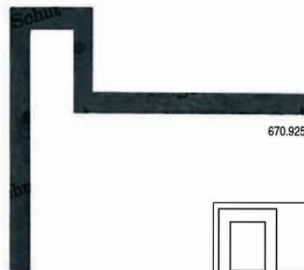
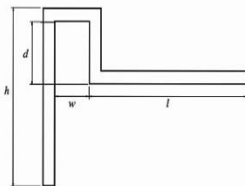
Hardened stainless steel squares with heavy beam



670.604

Item No.	Dimensions mm	Cross-section/mm
With knife-edges (DIN 875/00):		
670.601	50 x 40	14 x 10/16 x 2
670.602	75 x 50	14 x 10/18 x 2
670.603	100 x 70	16 x 10/18 x 2
670.604	150 x 100	20 x 12/22 x 2
670.605	200 x 130	24 x 14/26 x 2

Flange squares (not standardized)



670.925

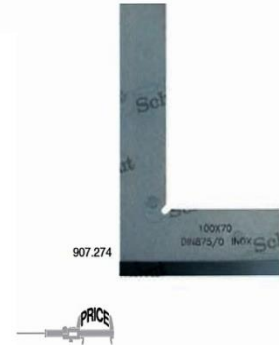
Item No.	Dimensions/mm			
	l	h	w	d
670.925	300	300	64	105
670.926	400	400	65	115
670.927	500	500	70	126
670.928	600	600	71	124

Stainless steel squares with base

- Hardened stainless steel.
- Lapped measuring faces.
- Accuracy according DIN 875.

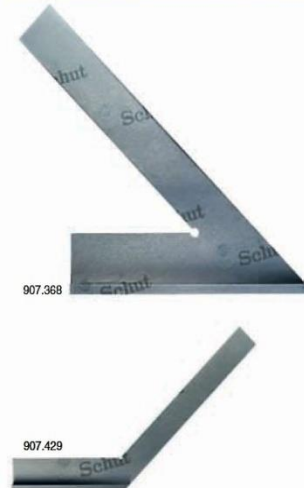
Item No.	Dimensions mm	Cross-section/mm
DIN 875/1:		
907.287	75 x 50	15 x 5
907.288	100 x 70	20 x 5
907.289	150 x 100	25 x 5
907.290	200 x 130	30 x 6
907.291	250 x 160	35 x 7
907.292	300 x 200	40 x 8

DIN 875/0:		
907.272	50 x 40	12 x 5
907.273	75 x 50	15 x 5
907.274	100 x 70	20 x 5
907.275	150 x 100	25 x 5
907.276	200 x 130	30 x 6



907.274

Steel squares with base



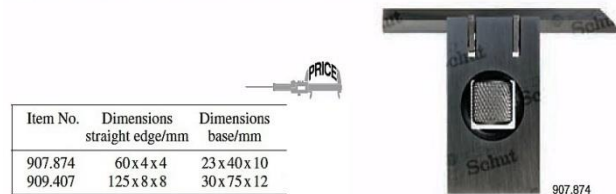
907.368



Item No.	Dimensions mm	Cross-section/mm
Acute angle squares 45°, DIN 875/2:		
907.365	100 x 70	20 x 5
907.366	120 x 80	20 x 5
907.367	150 x 100	20 x 5
907.368	200 x 130	25 x 5
Acute angle squares 60°, DIN 875/2:		
907.389	100 x 70	20 x 5
907.390	120 x 80	20 x 5
907.391	150 x 100	20 x 5
907.392	200 x 130	25 x 5
Mitre squares 135°, DIN 875/2:		
907.427	100 x 70	20 x 5
907.428	120 x 80	20 x 5
907.429	150 x 100	20 x 5
907.430	200 x 130	25 x 5

Adjustable squares

Precise base with sliding straight edge. The straight edge can be moved continuously along the base and can be firmly clamped by the spindle. All measuring faces are ground and the complete square is hardened. The adjustable straight edge enables working with for instance short edges and grooves.



907.874

Item No.	Dimensions straight edge/mm	Dimensions base/mm
907.874	60 x 4 x 4	23 x 40 x 10
909.407	125 x 8 x 8	30 x 75 x 12

Squares with heavy beam

- Hardened stainless steel.
- Lapped measuring faces.
- Accuracy according DIN 875/0.

Item No.	Dimensions mm	Cross-section/mm
907.262	50 x 40	14 x 10/16 x 2
907.263	75 x 50	14 x 10/16 x 2
907.264	100 x 70	18 x 12/20 x 3
907.265	150 x 100	24 x 14/25 x 3
907.266	200 x 130	28 x 16/30 x 4

907.264

Squares with heavy beam and knife-edges

- Hardened stainless steel.
- Lapped measuring faces.
- Accuracy according DIN 875/00.

Item No.	Dimensions mm	Cross-section/mm
907.245	50 x 40	14 x 10/16 x 2
907.246	75 x 50	14 x 10/16 x 2
907.247	100 x 70	18 x 12/20 x 3
907.248	150 x 100	24 x 14/25 x 3
907.249	200 x 130	28 x 16/30 x 4

907.247

Beveled edge squares

- Hardened stainless steel.
- Lapped measuring faces.
- Accuracy according DIN 875/00.



907.252

Item No.	Dimensions mm	Cross-section/mm
907.250	50 x 40	12 x 4
907.251	75 x 50	16 x 4
907.252	100 x 70	20 x 5
907.253	150 x 100	25 x 6
907.254	200 x 130	30 x 7

Beveled edge squares

- Hardened steel.
- Ground and lapped measuring faces.
- Accuracy according DIN 875/00.



670.435

Item No.	Dimensions/mm
Bright steel:	
670.403	50 x 40
670.404	75 x 50
670.405	100 x 70
670.406	150 x 100
670.407	200 x 130
Stainless steel:	
670.433	50 x 40
670.434	75 x 50
670.435	100 x 70
670.436	150 x 100
670.437	200 x 130

Toolmakers' set

Consisting of:

- 1 beveled straight edge: 100 mm,
- 1 flat beveled edge square: 75 x 50 mm,
- 1 flat beveled edge square: 40 x 28 mm,
- 1 flat beveled edge square: 25 x 20 mm,
- 1 scriber: 8 x 8 x 60 mm.

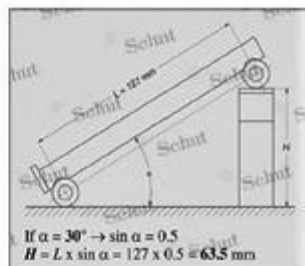


Item No.	Description
852.201	Toolmakers' set

Sine bar

By means of a sine bar and with gauge blocks, a reference plane can be created ($l=150\text{ mm}$, $w=25\text{ mm}$) at an angle of 0° to 60° with respect to the base. The base of the sine bar consists of two rollers with a center to center distance of $127 \pm 0.004\text{ mm}$. In order to make a curve the gauge blocks are placed under one of the rollers.

- Straightness and parallelism: $5\text{ }\mu\text{m}$.



Item No.	Description
909.417	Sine bar

Toolmakers' squares

- Hardened stainless steel.
- Lapped measuring faces.
- Accuracy according DIN 875/00.



907.256

Item No.	Dimensions mm	Cross-section/mm
907.255	25 x 20	6 x 3.5/5 x 3.5
907.256	40 x 28	8 x 3.5/5 x 3.5

Toolmakers' squares

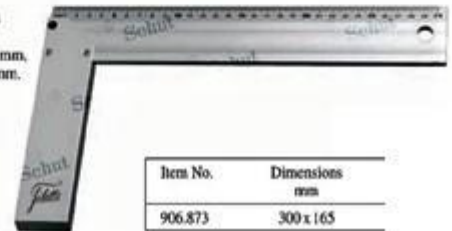
Flat beveled edge squares, with the knife-edge on the inside.



Item No.	Dimensions mm	Angle
852.220	25 x 20	90°
852.222	40 x 28	90°
852.223	40 x 28	89°30'
852.224	40 x 28	90°30'

Aluminum square with graduation

- Measuring range: 0 - 300 mm.
- Graduation: 1 mm.
- Anodized aluminum.
- With base for scribing lines in 90° and 45° .
- Cross-section base: 40 x 14 mm, Cross-section ruler: 50 x 5 mm.



Item No.	Dimensions mm
906.873	300 x 165

Center squares

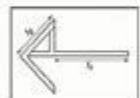
Center squares with mm graduation on the blade, to mark the center on round discs or axes.

- Stainless steel construction, no-glare chrome finished.
- Graduation placed by laser.



907.893

Item No.	Length/mm	Max. ϕ mm
907.893	100	90
907.894	150	190
907.895	200	220
907.896	250	230
907.897	300	280
909.972	400	380
909.973	500	530



Caliper compasses

- For scribing of diameters of 0 - 600 mm.
- Vernier: 0.1 mm.
- Stainless steel construction, no-glare chrome finished.
- Fixed jaw and beam made out of one piece.
- Hardened, ground and lapped measuring faces.



906.425

Item No.	For scribing up to ϕ /mm	Meas. range mm	Jaw length mm
909.424	300	150	40
909.425	400	200	40
909.426	500	250	40
909.427	600	300	40

