

**THREE JAW CHUCKS  
SELF CENTERING  
SYSTEM CUSHMAN**

**MANDRINS DE TOUR 3 MORS  
SERRAGE CONCENTRIQUE  
SYSTEM CUSHMAN**

**Type AC3-steel body**  
Short taper mounting DIN 55029  
1 set of 3 hardened turning jaws  
1 set of 3 hardened boring jaws  
key and camlock studs

**Type AC3-corps acier**  
Montage sur cône court DIN 55029  
1 jeu de 3 mors durs intérieurs  
1 jeu de 3 mors durs extérieurs  
clé de serrage et goujons camlock

**Type ACR3-steel body**  
Short taper mounting DIN 55029  
1 set of 3 hardened base jaws  
1 set of 3 hardened reversible top jaws  
key and camlock studs

**Type ACR3-corps acier**  
Montage sur cône court DIN 55029  
1 jeu de 3 semelles trempées  
1 jeu de 3 mors durs rapportés  
clé de serrage et goujons camlock



Type AC  
Ø 350 - 400 mm



Type ACR  
Ø 350 - 400 mm

| Bestell-Nummer<br>Order number<br>Numéro de commande |         | Futter<br>Chuck ø<br>Mandrin | Kegel<br>Taper<br>Cône | Technische Daten - Technical data - Données techniques |     |     |        |        |            |    |    |    |    |       |     |     |      |     |       |     | Gewicht<br>Weight Kg<br>Poids |      |
|--|---------|------------------------------|------------------------|--|-----|-----|--------|--------|------------|----|----|----|----|-------|-----|-----|------|-----|-------|-----|-------------------------------|------|
| AC3  | ACR3    | ø A                          |                        | B  | C   | D   | E      | F      | G          | H  | J  | K  | L  | M     | N   | O   | P    | V   | W     | AC3 | ACR3                          |      |
|  |         | mm                           | inch                   |  |     |     |        |        |            |    |    |    |    |       |     |     |      |     |       |     |                               |      |
| 400-249  | 400-266 | 350                          | 14                     | 6"   | 105 | 100 | 106,38 | 133,36 | 6x<br>22,2 | 17 | 38 | 50 | 14 | 194,7 | 127 | 135 | 81,6 | 155 | 113,1 | 42  | 66,0                          | 68,0 |
| 400-250  | 400-267 | 350                          | 14                     | 8"   | 105 | 110 | 139,73 | 171,46 | 6x<br>25,4 | 19 | 38 | 50 | 14 | 194,7 | 127 | 135 | 81,6 | 155 | 113,1 | 42  | 64,0                          | 66,0 |
| 400-268  | 400-301 | 350                          | 14                     | 11"  | 105 | 110 | 196,88 | 234,96 | 6x<br>30,2 | 21 | 38 | 50 | 14 | 194,7 | 127 | 135 | 81,6 | 155 | 113,1 | 42  | 64,0                          | 66,0 |
| 400-269  | 400-302 | 400                          | 15 ¼                   | 6"   | 105 | 100 | 106,38 | 133,36 | 6x<br>22,2 | 17 | 38 | 50 | 15 | 194,7 | 127 | 135 | 81,6 | 155 | 113,1 | 42  | 82,0                          | 84,0 |

**THREE JAW CHUCKS  
SELF CENTERING  
SYSTEM CUSHMAN**

**MANDRINS DE TOUR 3 MORS  
SERRAGE CONCENTRIQUE  
SYSTEM CUSHMAN**

**Type AC3-steel body**  
Short taper mounting DIN 55029  
1 set of 3 hardened turning jaws  
1 set of 3 hardened boring jaws  
key and camlock studs

**Type AC3-corps acier**  
Montage sur cône court DIN 55029  
1 jeu de 3 mors durs intérieurs  
1 jeu de 3 mors durs extérieurs  
clé de serrage et goujons camlock

**Type ACR3-steel body**  
Short taper mounting DIN 55029  
1 set of 3 hardened base jaws  
1 set of 3 hardened reversible top jaws  
key and camlock studs

**Type ACR3-corps acier**  
Montage sur cône court DIN 55029  
1 jeu de 3 semelles trempées  
1 jeu de 3 mors durs rapportés  
clé de serrage et goujons camlock



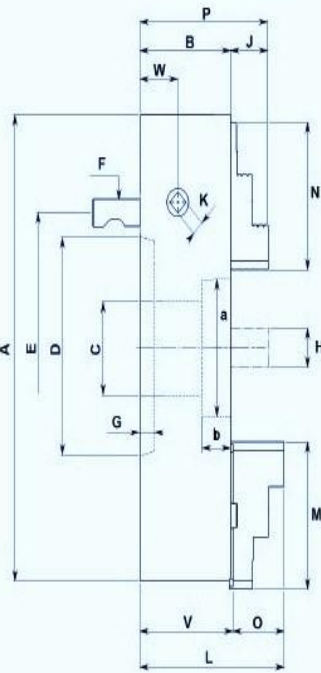
Type AC  
Ø 400 - 600 mm



Type ACR  
Ø 400



Type ACR  
Ø 500 - 700 mm



| Bestell-Nummer<br>Order number<br>Numéro de commande |         | Futter<br>Chuck ø<br>Mandrin | Kegel<br>Taper<br>Cône | Technische Daten - Technical data - Données techniques |     |         |         |        |            |            |    |    |    |       |       |     |      |     |       |       | Gewicht<br>Weight Kg<br>Poids |       |       |
|--|---------|------------------------------|------------------------|--|-----|---------|---------|--------|------------|------------|----|----|----|-------|-------|-----|------|-----|-------|-------|-------------------------------|-------|-------|
| AC3  | ACR3    | ø A                          |                        | B  | C   | D       | E       | F      | G          | H          | J  | K  | L  | M     | N     | O   | P    | V   | W     | AC3   | ACR3                          |       |       |
|  |         | mm                           | inch                   |  |     |         |         |        |            |            |    |    |    |       |       |     |      |     |       |       |                               |       |       |
| 400-270  | 400-303 | 400                          | 15 ¼                   | 8"   | 105 | 110     | 139,73  | 171,46 | 6x<br>25,4 | 19         | 38 | 50 | 14 | 194,7 | 127   | 135 | 81,6 | 155 | 113,1 | 42    | 82,0                          | 84,0  |       |
| 400-271  | 400-304 | 400                          | 15 ¼                   | 11"  | 105 | 110     | 196,88  | 234,96 | 6x<br>30,2 | 21         | 38 | 50 | 14 | 194,7 | 127   | 135 | 81,6 | 155 | 113,1 | 42    | 79,0                          | 81,0  |       |
| 400-272  | 400-305 | 500                          | 20                     | 6"   | 126 | 100     | 106,38  | 133,36 | 6x<br>22,2 | 17         | 42 | 52 | 16 | 205,7 | 127   | 160 | 71,6 | 178 | 134,1 | 53    | 140,0                         | 142,0 |       |
| 400-273  | 400-306 | 500                          | 20                     | 8"   | 126 | 130     | 139,73  | 171,46 | 6x<br>25,4 | 19         | 42 | 52 | 16 | 205,7 | 127   | 160 | 71,6 | 178 | 134,1 | 53    | 140,0                         | 142,0 |       |
| 400-274  | 400-307 | 500                          | 20                     | 11"  | 126 | 130/190 | 196,88  | 234,96 | 6x<br>30,2 | 21         | 42 | 52 | 16 | 205,7 | 127   | 160 | 71,6 | 178 | 134,1 | 53    | 132,0                         | 134,0 |       |
| 400-275  | 400-308 | 500                          | 20                     | 15"  | 126 | 190     | 285,78  | 330,21 | 6x<br>34,9 | 23         | 42 | 52 | 16 | 205,7 | 127   | 160 | 71,6 | 178 | 134,1 | 53    | 132,0                         | 134,0 |       |
| 400-276  | 400-309 | 500                          | 20                     | 20"  | 146 | 190     | 412,78  | 463,6  | 6x<br>41,3 | 24         | 42 | 52 | 16 | 205,7 | 127   | 160 | 71,6 | 178 | 134,1 | 53    | 155,0                         | 157,0 |       |
| 400-277  | 400-310 | 600                          | 23 ½                   | 8"   | 128 | 130     | 139,73  | 171,46 | 6x<br>25,4 | 19         | 50 | 52 | 16 | 207,7 | 127   | 160 | 71,6 | 180 | 136,1 | 53    | 210,0                         | 212,0 |       |
| 400-278  | 400-311 | 600                          | 23 ½                   | 11"  | 128 | 190     | 196,88  | 234,96 | 6x<br>30,2 | 21         | 50 | 52 | 16 | 207,7 | 127   | 160 | 71,6 | 180 | 136,1 | 53    | 205,0                         | 207,0 |       |
| 400-279  | 400-312 | 600                          | 23 ½                   | 15"  | 128 | 190/260 | 285,78  | 330,21 | 6x<br>34,9 | 23         | 50 | 52 | 16 | 207,7 | 127   | 160 | 71,6 | 180 | 136,1 | 53    | 200,0                         | 202,0 |       |
| 400-280  | 400-313 | 600                          | 23 ½                   | 20"  | 128 | 190/260 | 412,78  | 463,6  | 6x<br>41,3 | 24         | 50 | 52 | 16 | 207,7 | 127   | 160 | 71,6 | 180 | 136,1 | 53    | 200,0                         | 202,0 |       |
| *  | -       | 400-314                      | 630                    | 25   | 8"  | 135,5   | 130     | 139,73 | 171,46     | 6x<br>25,4 | 19 | 55 | -  | 16    | 210,5 | 207 | -    | 83  | -     | 127,5 | 53                            | -     | 252,0 |
| *  | -       | 400-315                      | 630                    | 25   | 11" | 135,5   | 190     | 196,88 | 234,96     | 6x<br>30,2 | 21 | 55 | -  | 16    | 210,5 | 207 | -    | 83  | -     | 127,5 | 53                            | -     | 242,0 |
| *  | -       | 400-316                      | 630                    | 25   | 15" | 135,5   | 190/260 | 285,78 | 330,21     | 6x<br>34,9 | 23 | 55 | -  | 16    | 210,5 | 207 | -    | 83  | -     | 127,5 | 53                            | -     | 240,0 |
| *  | -       | 400-317                      | 630                    | 25   | 20" | 135,5   | 190/330 | 412,78 | 463,6      | 6x<br>41,3 | 24 | 55 | -  | 16    | 210,5 | 207 | -    | 83  | -     | 127,5 | 53                            | -     | 232,0 |
| *  | -       | 400-334                      | 700                    | 27 ½   | 8"  | 137,5   | 130     | 139,73 | 171,46     | 6x<br>25,4 | 19 | 55 | -  | 16    | 212,5 | 207 | -    | 83  | -     | 129,5 | 55                            | -     | 283,0 |
| *  | -       | 400-335                      | 700                    | 27 ½   | 11" | 137,5   | 190     | 196,88 | 234,96     | 6x<br>30,2 | 21 | 55 | -  | 16    | 212,5 | 207 | -    | 83  | -     | 129,5 | 55                            | -     | 283,0 |
| *  | -       | 400-336                      | 700                    | 27 ½   | 15" | 137,5   | 190/260 | 285,78 | 330,21     | 6x<br>34,9 | 23 | 55 | -  | 16    | 212,5 | 207 | -    | 83  | -     | 129,5 | 55                            | -     | 283,0 |

**WESCOTT CHUCK  
SELF CENTERING AND  
JAWS ADJUSTABLE SEPARATLY**

**THREE-JAW COMBINATION  
LATHE CHUCKS**

**Type WAC/3-steel body**  
Short taper mounting DIN 55029  
1 set of 3 hardened base jaws  
1 set of 3 hardened reversible jaws  
key and camlock studs



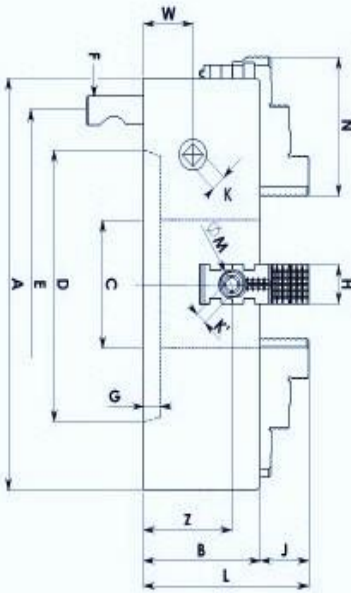
Type WAC 3  
Ø 200 - 400 mm



Type WAC 4  
Ø 200 - 400 mm

**FOUR-JAW COMBINATION  
LATHE CHUCKS**

**Type WAC/4-steel body**  
Short taper mounting DIN 55029  
1 set of 4 hardened base jaws  
1 set of 4 hardened reversible jaws  
key and camlock studs



| Bestell-Nummer<br>Order number<br>Numéro de commande |         | Futter<br>Chuck ø<br>Mandrin |        | Kegel<br>Taper<br>Cône | Technische Daten - Technical data - Données techniques |      |        |        |            |    |    |    |    |     |    |     |    |       |    |       |  | Gewicht<br>Weight<br>Poids |
|--|---------|------------------------------|--------|------------------------|--|------|--------|--------|------------|----|----|----|----|-----|----|-----|----|-------|----|-------|--|----------------------------|
| WAC 3  | WAC 4   | ø A                          |        | inch                   | B  | C    | D      | E      | F          | G  | H  | J  | K  | L   | M  | N   | K  | Z     | W  | Kg    |  |                            |
|  |         | mm                           | inch   |                        |  |      |        |        |            |    |    |    |    |     |    |     |    |       |    |       |  |                            |
| 430-131  | 430-148 | 200                          | 8      | 4"                     | 111  | 56   | 63,5   | 82,55  | 3 x 15,9   | 13 | 30 | 36 | 10 | 147 | 20 | 78  | 8  | 85    | 33 | 21,0  |  |                            |
| 430-132  | 430-149 | 200                          | 8      | 5"                     | 111  | 56   | 82,56  | 104,78 | 3 x 19     | 16 | 30 | 36 | 10 | 147 | 20 | 78  | 8  | 85    | 33 | 21,0  |  |                            |
| 430-133  | 430-150 | 200                          | 8      | 6"                     | 111  | 56   | 106,38 | 133,36 | 3 x 22,2   | 17 | 30 | 36 | 10 | 147 | 20 | 78  | 8  | 85    | 33 | 21,0  |  |                            |
| 430-134  | 430-151 | 215                          | 8 1/2  | 6"                     | 111  | 60,5 | 106,38 | 133,36 | 3 x 22,2   | 17 | 30 | 36 | 10 | 147 | 20 | 78  | 8  | 85    | 33 | 24,0  |  |                            |
| 430-135  | 430-152 | 250                          | 10     | 6"                     | 126  | 75   | 106,38 | 133,36 | 6 x 22,2   | 17 | 34 | 39 | 12 | 165 | 26 | 93  | 10 | 96,5  | 37 | 36,0  |  |                            |
| 430-136  | 430-153 | 250                          | 10     | 8"                     | 126  | 75   | 130,73 | 171,46 | 3/6 x 25,4 | 19 | 34 | 39 | 12 | 165 | 26 | 93  | 10 | 96,5  | 37 | 36,0  |  |                            |
| 430-137  | 430-154 | 315                          | 12 1/2 | 6"                     | 130  | 100  | 106,38 | 133,36 | 6 x 22,2   | 17 | 38 | 42 | 14 | 172 | 28 | 108 | 12 | 100,5 | 38 | 62,0  |  |                            |
| 430-138  | 430-155 | 315                          | 12 1/2 | 8"                     | 130  | 100  | 130,73 | 171,46 | 6 x 25,4   | 19 | 38 | 42 | 14 | 172 | 28 | 108 | 12 | 100,5 | 38 | 62,0  |  |                            |
| 430-139  | 430-156 | 315                          | 12 1/2 | 11"                    | 153  | 100  | 196,88 | 234,96 | 6 x 30,2   | 21 | 38 | 42 | 14 | 195 | 28 | 108 | 12 | 123,5 | 61 | 62,0  |  |                            |
| 430-140  | 430-157 | 400                          | 15 3/4 | 6"                     | 137  | 100  | 106,38 | 133,36 | 6 x 22,2   | 17 | 38 | 52 | 15 | 189 | 28 | 135 | 12 | 107,2 | 42 | 105,0 |  |                            |
| 430-141  | 430-158 | 400                          | 15 3/4 | 8"                     | 137  | 110  | 130,73 | 171,46 | 6 x 25,4   | 19 | 38 | 52 | 15 | 189 | 28 | 135 | 12 | 107,2 | 42 | 105,0 |  |                            |

**DREIACKEN-DREHFUTTER  
ZENTRISCH SPANNEND  
SYSTEM CUSHMAN**

**THREE JAW CHUCKS  
SELF CENTERING  
SYSTEM CUSHMAN**

**MANDRINS DE TOUR 3 MORS  
SERRAGE CONCENTRIQUE  
SYSTEM CUSHMAN**

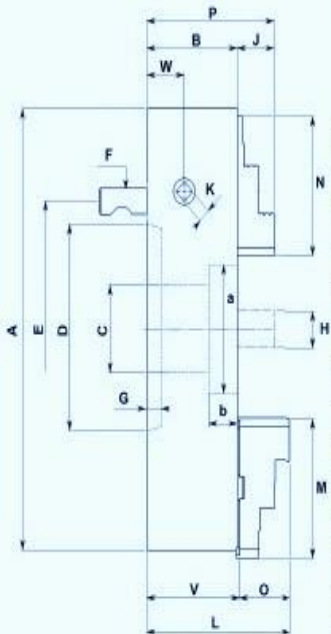
**Type ACR3-Stahlkörper**  
Kurzkegelaufnahme DIN 55029  
1 Satz = 3 gehärtete Grundbacken  
1 Satz = 3 gehärtete Umkehr-Aufsatzbacken  
Spannschlüssel und Camlockboizen

**Type ACR3-steel body**  
Short taper mounting DIN 55029  
1 set of 3 hardened base jaws  
1 set of 3 hardened reversible top jaws  
key and camlock studs

**Type ACR3-corps acier**  
Montage sur cône court DIN 55029  
1 Jeu de 3 semelles trempées  
1 Jeu de 3 mors durs rapportés  
clé de serrage et goujons camlock



Type ACR  
Ø 700 - 1600 mm



| Bestell-Nummer<br>Order number<br>Numéro de commande |         | Futter<br>Chuck ø<br>Mandrin |        | Kegel<br>Taper<br>Cône | Technische Daten - Technical data - Données techniques |         |        |        |         |    |    |   |    |       |     |   |    |   |       |      |           | Gewicht<br>Weight<br>Poids |
|--|---------|------------------------------|--------|------------------------|--|---------|--------|--------|---------|----|----|---|----|-------|-----|---|----|---|-------|------|-----------|----------------------------|
| AC 3   | ACR3    | ø A                          |        | inch                   | B  | C       | D      | E      | F       | G  | H  | J | K  | L     | M   | N | O  | P | V     | W    | -<br>ACR3 |                            |
|  |         | mm                           | inch   |                        |  |         |        |        |         |    |    |   |    |       |     |   |    |   |       |      |           |                            |
| -  | 400-337 | 700                          | 27 1/2 | 20"                    | 155  | 190/400 | 412,78 | 483,6  | 6x 41,3 | 24 | 55 | - | 16 | 212,5 | 207 | - | 83 | - | 129,5 | 55   | -         | 268,0                      |
| -  | 400-338 | 800                          | 31 1/2 | 8"                     | 155  | 130     | 130,73 | 171,46 | 6x 25,4 | 19 | 55 | - | 16 | 212,5 | 207 | - | 83 | - | 129,5 | 55   | -         | 403,0                      |
| -  | 400-339 | 800                          | 31 1/2 | 11"                    | 155  | 190     | 196,88 | 234,96 | 6x 30,2 | 21 | 55 | - | 16 | 212,5 | 207 | - | 83 | - | 129,5 | 55   | -         | 393,0                      |
| -  | 400-340 | 800                          | 31 1/2 | 15"                    | 155  | 190/260 | 285,78 | 330,21 | 6x 34,9 | 23 | 55 | - | 16 | 212,5 | 207 | - | 83 | - | 129,5 | 55   | -         | 393,0                      |
| -  | 400-341 | 800                          | 31 1/2 | 20"                    | 155  | 190/400 | 412,78 | 483,6  | 6x 41,3 | 24 | 55 | - | 16 | 212,5 | 207 | - | 83 | - | 129,5 | 55   | -         | 378,0                      |
| -  | 400-342 | 1000                         | 39 3/8 | 8"                     | 155  | 130     | 130,73 | 171,46 | 6x 25,4 | 19 | 70 | - | 16 | 230   | 170 | - | 83 | - | 147   | 72,5 | -         | 583,0                      |
| -  | 400-343 | 1000                         | 39 3/8 | 11"                    | 155  | 190     | 196,88 | 234,96 | 6x 30,2 | 21 | 70 | - | 16 | 230   | 170 | - | 83 | - | 147   | 72,5 | -         | 558,0                      |
| -  | 400-344 | 1000                         | 39 3/8 | 15"                    | 155  | 190/260 | 285,78 | 330,21 | 6x 34,9 | 23 | 70 | - | 16 | 230   | 170 | - | 83 | - | 147   | 72,5 | -         | 553,0                      |
| -  | 400-345 | 1000                         | 39 3/8 | 20"                    | 155  | 190/400 | 412,78 | 483,6  | 6x 41,3 | 24 | 70 | - | 16 | 230   | 170 | - | 83 | - | 147   | 72,5 | -         | 538,0                      |
| -  | 400-346 | 1200                         | 47 1/4 | 11"                    | 155  | 190     | 196,88 | 234,96 | 6x 30,2 | 21 | 70 | - | 16 | 230   | 170 | - | 83 | - | 147   | 72,5 | -         | 985,0                      |
| -  | 400-347 | 1200                         | 47 1/4 | 15"                    | 155  | 190/260 | 285,78 | 330,21 | 6x 34,9 | 23 | 70 | - | 16 | 230   | 170 | - | 83 | - | 147   | 72,5 | -         | 985,0                      |
| -  | 400-348 | 1200                         | 47 1/4 | 20"                    | 155  | 190/400 | 412,78 | 483,6  | 6x 41,3 | 24 | 70 | - | 16 | 230   | 170 | - | 83 | - | 147   | 72,5 | -         | 955,0                      |
| -  | 400-349 | 1500                         | 59     | 11"                    | 155  | 190     | 196,88 | 234,96 | 6x 30,2 | 21 | 70 | - | 16 | 230   | 170 | - | 83 | - | 147   | 72,5 | -         | 1510,0                     |
| -  | 400-350 | 1500                         | 59     | 15"                    | 155  | 190/260 | 285,78 | 330,21 | 6x 34,9 | 23 | 70 | - | 16 | 230   | 170 | - | 83 | - | 147   | 72,5 | -         | 1500,0                     |
| -  | 400-368 | 1500                         | 59     | 20"                    | 155  | 190/400 | 412,78 | 483,6  | 6x 41,3 | 24 | 70 | - | 16 | 230   | 170 | - | 83 | - | 147   | 72,5 | -         | 1490,0                     |
| -  | 400-369 | 1600                         | 63     | 11"                    | 155  | 190     | 196,88 | 234,96 | 6x 30,2 | 21 | 70 | - | 16 | 230   | 170 | - | 83 | - | 147   | 72,5 | -         | 1660,0                     |
| -  | 400-370 | 1600                         | 63     | 15"                    | 155  | 190/260 | 285,78 | 330,21 | 6x 34,9 | 23 | 70 | - | 16 | 230   | 170 | - | 83 | - | 147   | 72,5 | -         | 1640,0                     |
| -  | 400-371 | 1600                         | 63     | 20"                    | 155  | 190/400 | 412,78 | 483,6  | 6x 41,3 | 24 | 70 | - | 16 | 230   | 170 | - | 83 | - | 147   | 72,5 | -         | 1620,0                     |